

# Behavioral Health Division

## *Programs, Services, Funding and Capacity*



Presented to: The Prince George's County Board of Health  
April 9, 2024  
Presented by: Denise Dunbar, Public Health Program Chief

# Health Department's Vision

*All Prince Georgians are their healthiest at every age and every stage.*

# Health Department's Mission

*To lead, engage, and empower our community to work collaboratively towards disease prevention, health equity, and total well-being.*



# Health Department's Value Statements

1. **Equity, diversity, and inclusivity** that reflects and supports all Prince Georgians
2. **Respect** and a commitment to caring for our community and each other
3. **Teamwork** in building a better future together
4. **Accountability** and Integrity to our teams and in our work
5. **Innovation** in driving change and seeking new solutions
6. **Excellence** in driving us toward achievement



# Summary of Strategic Divisional Priorities

## Behavioral Health Division:

1. Focuses on prevention and recovery.
2. Values partnerships with community-based service organizations.
  - ☐ Works to strengthen existing systems in our community, allowing us to address every resident's needs, including those underserved or at the highest risk.
3. Leads efforts to increase the number of professionals who can bridge the workforce shortage.
  - ☐ Engaging with County-based colleges and universities and the provider community.
4. Provide behavioral health services to meet the need regardless of their ability to pay.
  - ☐ Methadone-assisted treatment (MAT) services
  - ☐ We are working to increase our capacity to add additional behavioral health outpatient services that our county's residents need the most.

**Technical Support Training-  
Consultation:**

We train providers and non-profit organizations to use best-practice tools that improve outcomes. Ensuring high-quality programs and services is a win for everyone!

**Building Capacity**

**Creating a Workforce Pipeline:**

We partner with students studying Public Health, Psychology, Social Work, or Counseling who plan to work in Prince George's County when they graduate. We offer experience, training, and support for seamless entry into the county's workforce through the Health Department and collaboration with community partners.

**Behavioral Health Treatment:**

We run a JACHO-accredited outpatient medication-assisted treatment (MAT) program for people who are diagnosed with opioid use disorder and are seeking strategies to offer additional outpatient BH and support services, which are of greatest need to County residents.

**Behavioral Health Division:**  
*Providing a Circle of Support  
for Prince George's County's  
Residents*

**Screening & Connection to  
Care:**

We have programs that provide behavioral health and risk screenings (*to understand your needs*) and connect you to a provider who can help.

**Prevention Initiatives:**

We provide information and resources to prevent mental health and substance use disorders. We strive to deliver information to help prevent opioid-related deaths.

**System of Care Work:**

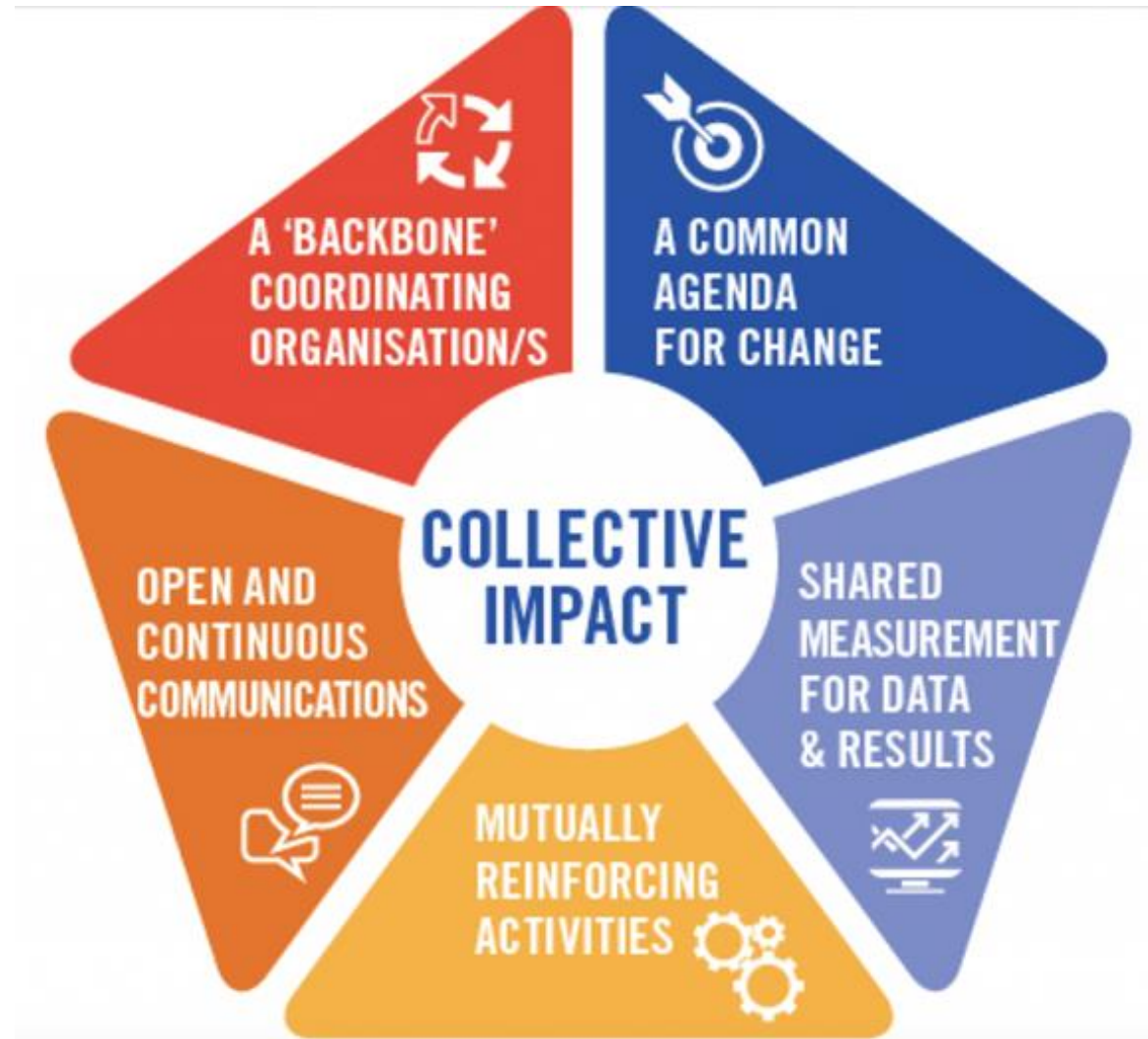
A network of community-based services/organizations working together to meet the needs of children, youth, and families.

**Recovery Initiatives:**

We support people who are diagnosed with or at risk for mental health and substance-related problems. We engage youth and adults in the criminal justice system, providing peer-led and recovery-focused support.



# Collective Impact Model



# Collective Impact- “One-Stop Shops”

## The Bridge Center at Adams House

(County General Funds pays 45% of the lease, \$88,100)



The Bridge Center on-boards a broad range of partner agencies that can provide the services that are needed by individuals returning from incarceration, transition-aged youth, and Veterans.

A few of the partners include:

Department of Social Services  
Catholic Charities  
Community Legal Services  
Damascus House  
Denney House  
Destiny Power & Purpose  
Eckerd Connects  
Employ Prince George's  
Life After Release  
Maryland Resource Center

Men in the Gap  
Mettle Works  
Solid Foundation  
National Association of Black  
Veterans (NABVETS)  
Department of Family Services  
Sasha Bruce  
A Father's Place  
Community Choice  
DXT Behavioral Health

Food For Thought  
House of Clyopatra  
House of Samaria  
KING Health  
Restoration Center  
Industrial Banking  
Greater Baden Medical Services  
Mission of Love  
New Mindz



**HEALTH**  
DEPARTMENT  
Prince George's County

# The Bridge Center “One-Stop Shops”

## Benefits of Partnership

- ☐ Partners Receive referrals for new clients
- ☐ Partners Receive access to **free** evidenced-based trainings:
  - ☐ Recovery Oriented Systems of Care (ROSOC)
  - ☐ Person-Centered Care Planning
  - ☐ Level of Services Case Management Inventory (LSCMI) Certification Training
  - ☐ Registered Peer Recovery Specialist Certification Training
  - ☐ Technical Support

## Requirement of Partnerships

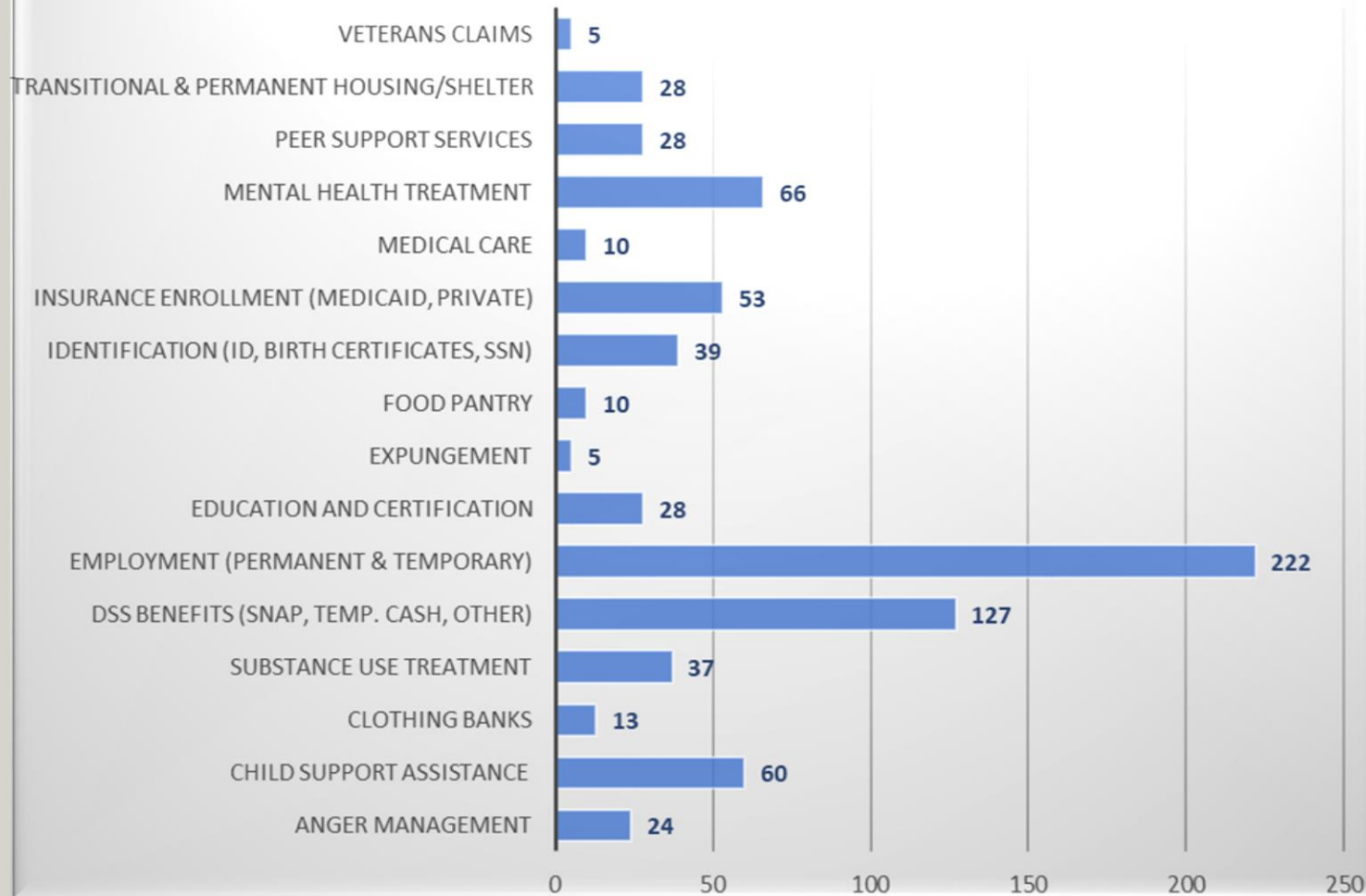
- ☐ Must attend partnership meetings
- ☐ Must contribute to the collection of shared data
- ☐ Must allow quarterly monitoring (*to ensure service delivery is high-quality*)





# Outcomes and Successes

**FY24 Key Participant Outcomes (to date)**



# Recidivism Rate

The recidivism rate for Bridge Center clients is drastically lower than that of the general population in the county, indicating that Bridge Center programs are successful in lowering the risk of recidivism.



## Bridge Center at Adams House

The recidivism rate of Bridge Center clients is less than 1%



## Prince George's County

The recidivism rate in Prince George's County is 24%



# Collective Impact: “*One-Stop Shops*”

## Langley Park Multi-Services Center

(County General Funds support lease: \$128,725)

- ❑ Intended to operate similarly to Bridge Center; however, we are still building partnerships
- ❑ Currently, more than 1,000 unduplicated residents access the following services and supports in the Langley Park community each month:
  - ❑ Department of Social Services (DSS): Benefits Enrollment
  - ❑ Community Legal Services: Legal Aid/Legal Advice
  - ❑ Maryland Health Connect: Health Insurance Assistance
  - ❑ Community Health Workers (CHW): Health-related Supports
  - ❑ Referrals to community resources: Food pantries, clothing banks, etc.



# Building a System of Care for Children, Youth and Families

## Prince George's County Health Department Launches Two New Programs After Receiving More than \$7 Million in Grants

[Comprehensive Behavioral Health Care for County Children, Youth, And Families | Prince George's County \(princegeorgescountymd.gov\)](https://princegeorgescountymd.gov/health-department/comprehensive-behavioral-health-care-for-county-children-youth-and-families)



*Coordinated Mental Health Services and Support for Prince George's County's children, youth, young adults and their families.*



**HEALTH  
DEPARTMENT**  
Prince George's County

# Other Youth Recovery Initiatives

## Adolescent Recovery Clubhouse

- ☐ Non-clinical support to at-risk 12 -17-year-olds
- ☐ Provides case management
- ☐ GED programming and Educational Tutoring
- ☐ Vocational Skill Building
- ☐ Evidence-based life skills
- ☐ Enriching field trips and prosocial activities

Capacity is 100 Youth









# Other Youth Recovery Initiatives

## Bridges2Success

- ☐ Youth (11-21) who have been arrested may be referred by the Department of Juvenile Services to our Bridges to Success Program for:
  - ☐ Case Management and Screening
  - ☐ Linkage to treatment or other needed support services
  - ☐ Life skills and vocational training
  - ☐ Family Support



# Community-Based Prevention Strategies

## 1. Naloxone training initiatives

- focused on increasing the capacity of persons trained as trainers
- and community-based entities that can distribute naloxone

## 2. Prevention program for at-risk high school-aged youth

- Initiatives at High Point, Northwestern, Duval, and Bladensburg High schools

## 3. Prevention campaigns and events

- Prescription Take-Back Day (recovered 40lbs of medications)
- Lock Your Meds Campaign
- Behavioral Health Promotions
  - Outreach events with Faith-based partners
  - Community-based activities and events
- Youth Education on the harmful impact of smoking and vaping (Patches provided to those who wish to quit smoking.

## 4. Tobacco Enforcement (Synar Compliance)

- Ensures retail establishments are not selling tobacco products to underaged minors



# Screening, Assessment and Linkage to Care

## Internal Partners

BHD provides screening and linkage to care for state and county partners, including:

- ☐ District Mental Health Court
- ☐ Department of Social Services (TCA, HB7, SB512)
- ☐ Maryland State Department of Parole and Probation
- ☐ Prince George's County Department of Corrections
- ☐ University of Maryland Capital Region Hospital (focused on Hospital Diversion)

## Direct Services to County Residents (Community Case Management)

- ☐ Involved in the criminal justice system
- ☐ In Recovery or Treatment for Substance Use Disorder and/or a Mental Health Condition



# Behavioral Health Treatment

## Medication Assisted Treatment (MAT) Clinic

- ☐ Level 1 Outpatient Opioid Adult Treatment Program
- ☐ Joint Commission Accredited
- ☐ Funded by County General Funds
  
- ☐ We are evaluating expanding to provide other Behavioral Health Treatment Services.



# Addressing the Workforce Shortage

## 1. Why Build Capacity among our Provider Community?

- ☐ Mental health is a public health issue
- ☐ Mental Health Professional Shortage Areas comprise more than half of the U.S.
- ☐ **Critical shortages** of behavioral health professionals are predicted by 2036
- ☐ Seniors are a unique population. Many providers simply are not trained to work with them.
- ☐ Behavioral health clinicians are burnt out and are considering leaving the profession.

## 2. BHD plans to create a county-wide fellowship program

- ☐ Pairing recent graduates (in Public Health, Psychology, and Social Work) with local public behavioral health sites (*experiential learning consortium initiative*).
- ☐ Eligible applicants must commit to working in Prince George's County for at least three years after completing the program

[Behavioral Health Workforce 2023 Brief \(hrsa.gov\)](https://hrsa.gov)

Moye J, Karel MJ, Stamm KE, et al. Workforce analysis of psychological practice with older adults: Growing crisis requires urgent action. Train Educ Prof Psychol. 2019;13(1),46-55. doi:10.1037/tep0000206.



**HEALTH  
DEPARTMENT**  
Prince George's County

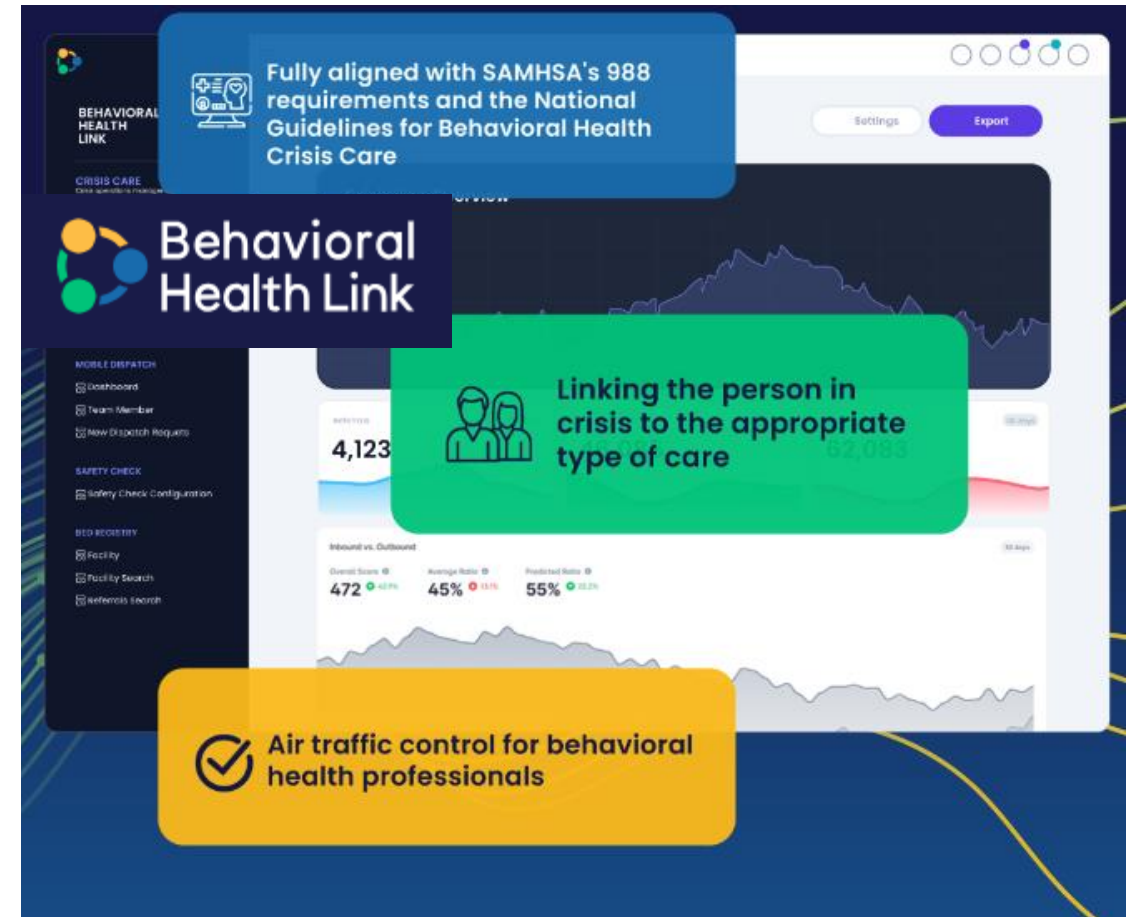
# Behavioral Health Data Dashboard- BHL Dispatch Pilot

## *“Data Tells A Story”*

October- December (2022) the division implemented a 3-month pilot of new software called Behavioral Health Link (BHL)

We tracked:

- ☐ Relationship of the caller
- ☐ Age of the person in crisis
- ☐ Date
- ☐ Time
- ☐ Zip codes of most urgent needs





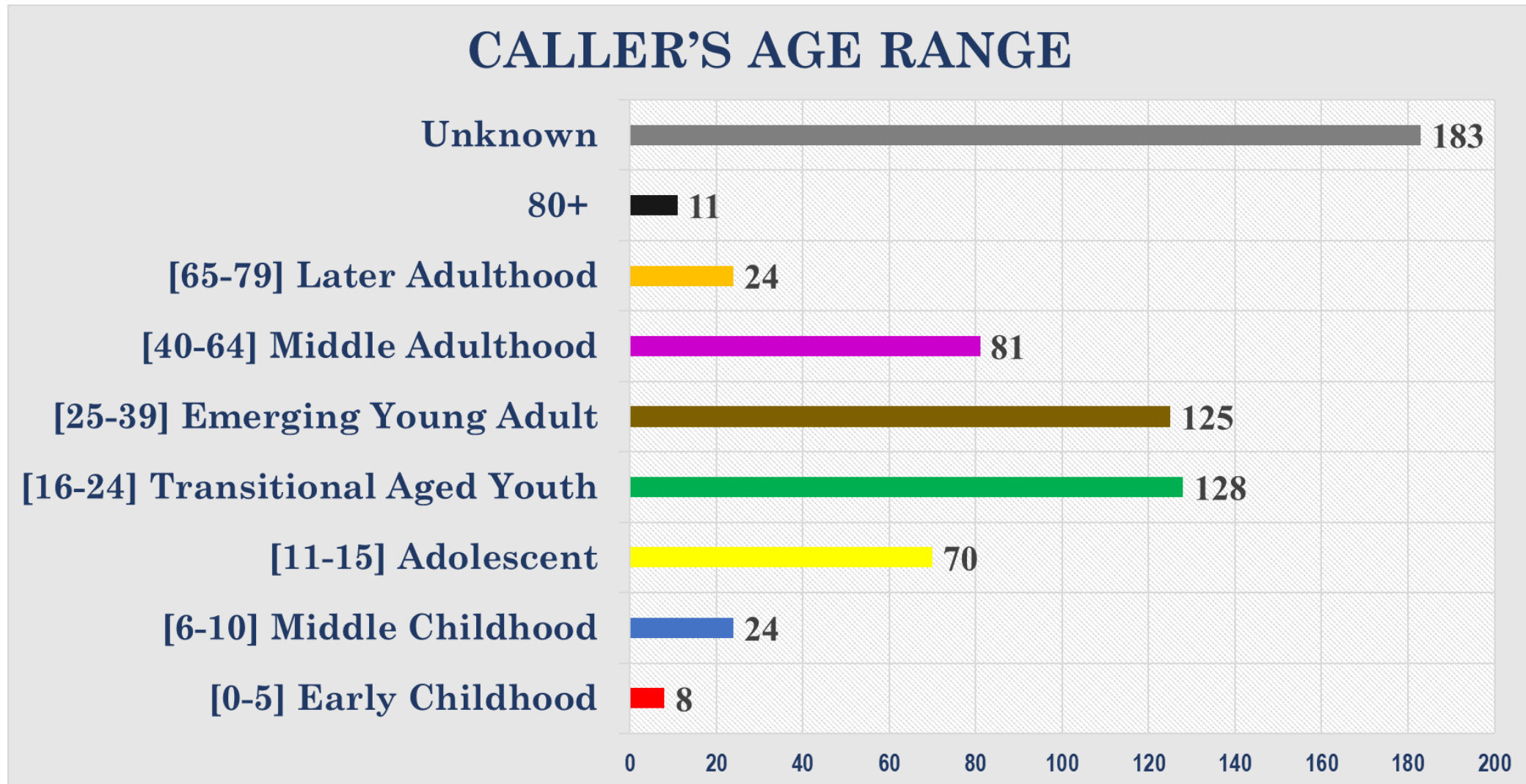
# BHL Pilot “Data Tells The Story” We learned...

Entity Placing the Call	Number of Calls
Prince George’s County Resident	410
Community Crisis Services Inc. (9-8-8 Call Center)	162
Police (Law Enforcement)	20
Emergency Medical Services (EMS)	4
Fire Department	4
Prince George’s County Public Schools (PGCPS)	22
Another County’s Resident (Frederick County, Howard, Montgomery, Charles, Ohio, Washington DC, Calvert)	24
Other: Dyer, Optum Health Care, Hope House, Domestic Violence Counselor	8
<b>Total Calls Received To Date</b>	<b>654</b>

Which County Residents are Calling?	
Concerned Citizens	213
Person in Crisis	151
Parent	118
Family Member (relationship not identified)	63
Child	8
Sibling	11
Aunt/Uncle	7
Spouse	1
Teacher/School	22
Other	60
<b>Total Calls</b>	<b>654</b>



# BHL Pilot – “Data Tells The Story” We learned...



# BHL Pilot – “Data Tells The Story” We learned...

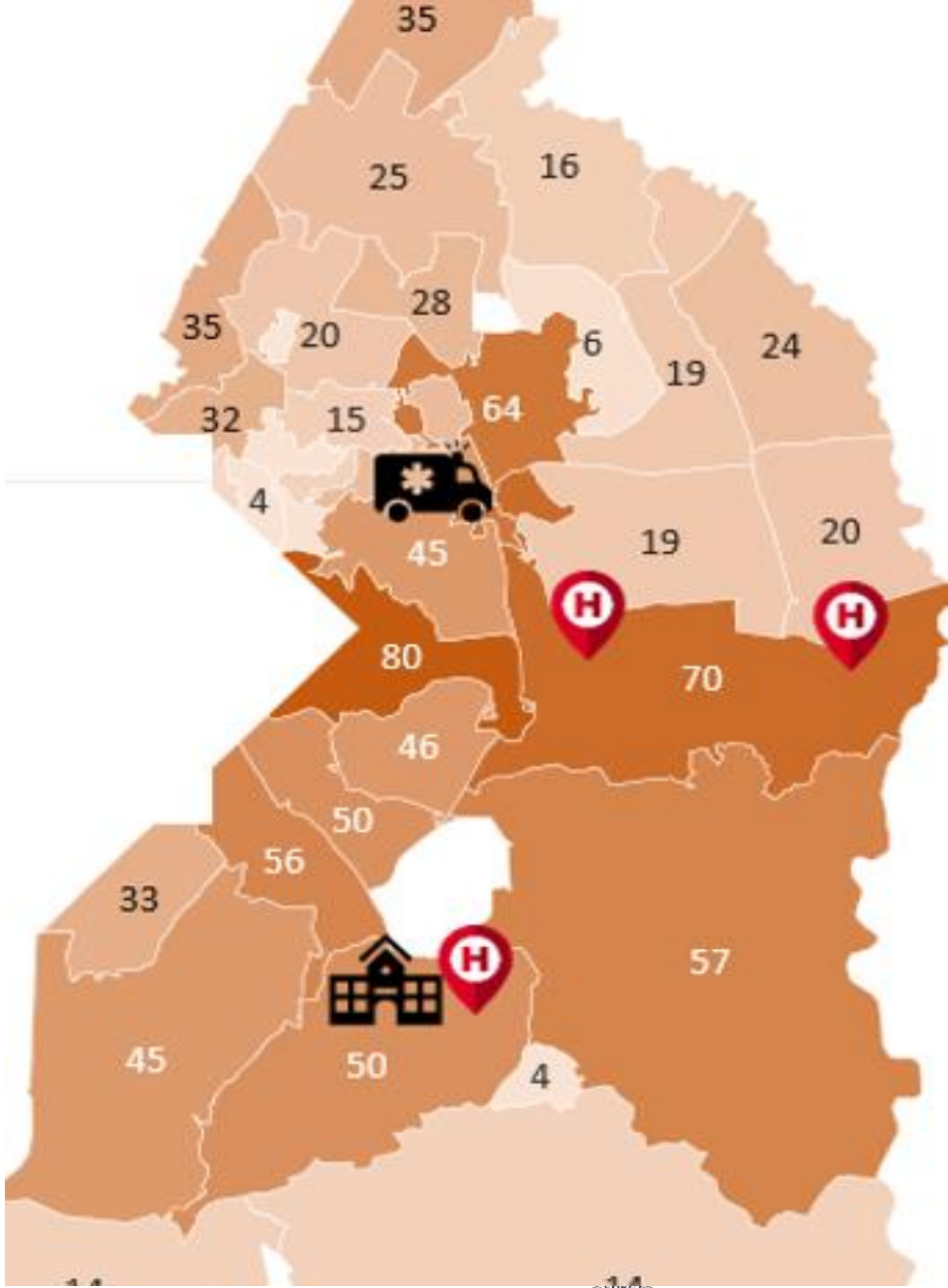
Zip Code	Location	Number of Calls
20745, 20746, 20747, 20748	Suitland, District Heights, Temple Hills, Oxon Hills	109
20740, 20781 - 20785	Hyattsville, College Park	84
20743, 20744	Capitol Heights, Fort Washington	60
20772, 20774	Upper Marlboro	52
20704,20705, 20708,20707	Beltsville, Laurel	48
20710, 20735, 20737	Bladensburg, Clinton, Riverdale	42
20706, 20770	Lanham Seabrook, Greenbelt	47
20715, 20716, 20720, 20721	Bowie	29
20607, 20613, 20623,20616	Brandywine, Accokeek, Cheltenham	19
20712, 20722	Mt Rainier, Brentwood	4
20769	Glenn Dale	2
Call Routed Incorrectly	Other County (Frederick, Howard, Montgomery, Charles, Calvert, Ohio, Washington DC)	31
	Unknown	127
Total		654



# Data Dashboard (Courtesy of TLC-MD)

Data July 1, 2022- June 30, 2023- MRT Responses

Zip Code	Number of Calls
20785 (Hyattsville)	80
20774 (Upper Marlboro)	70
20706 (Lanham)	64
20772 (Upper Marlboro)	57
20748 (Temple Hills)	56
20735 (Clinton)	50
20747(District Heights)	46
20785 (Hyattsville)	45
20744 (Fort Washington)	45
20707 (Laurel)	35
20783(Hyattsville)	35
20782 (Hyattsville)	32
20784 (Hyattsville)	26
20708 (Laurel)	16
20770 (Greenbelt)	28
20781 (Hyattsville)	4
TOTALS	673



# Data Dashboard (Courtesy of TLC-MD)

Data July 1, 2023- February 29, 2024, MRT Responses

Zip Code	Number of Calls
20785 (Hyattsville)	277
20774 (Upper Marlboro)	110
20772 (Upper Marlboro)	74
20747 (District Heights)	61
20770 (Greenbelt)	41
20743 (Capitol Heights)	96
20748 (Temple Hills)	72
20735 (Clinton)	77
20744 (Fort Washington)	100
20706 (Lanaham)	71
20783 (Hyattsville)	50
20782 (Hyattsville)	44
20707 (Laurel)	38
20784 (Hyattsville)	32
20708 (Laurel)	31
20781 (Hyattsville)	18
Totals	1192

