

# LOCAL BEHAVIORAL HEALTH AUTHORITY *LBHA OVERVIEW, BEHAVIORAL HEALTH PROVIDERS & GRANT FUNDED SERVICES*

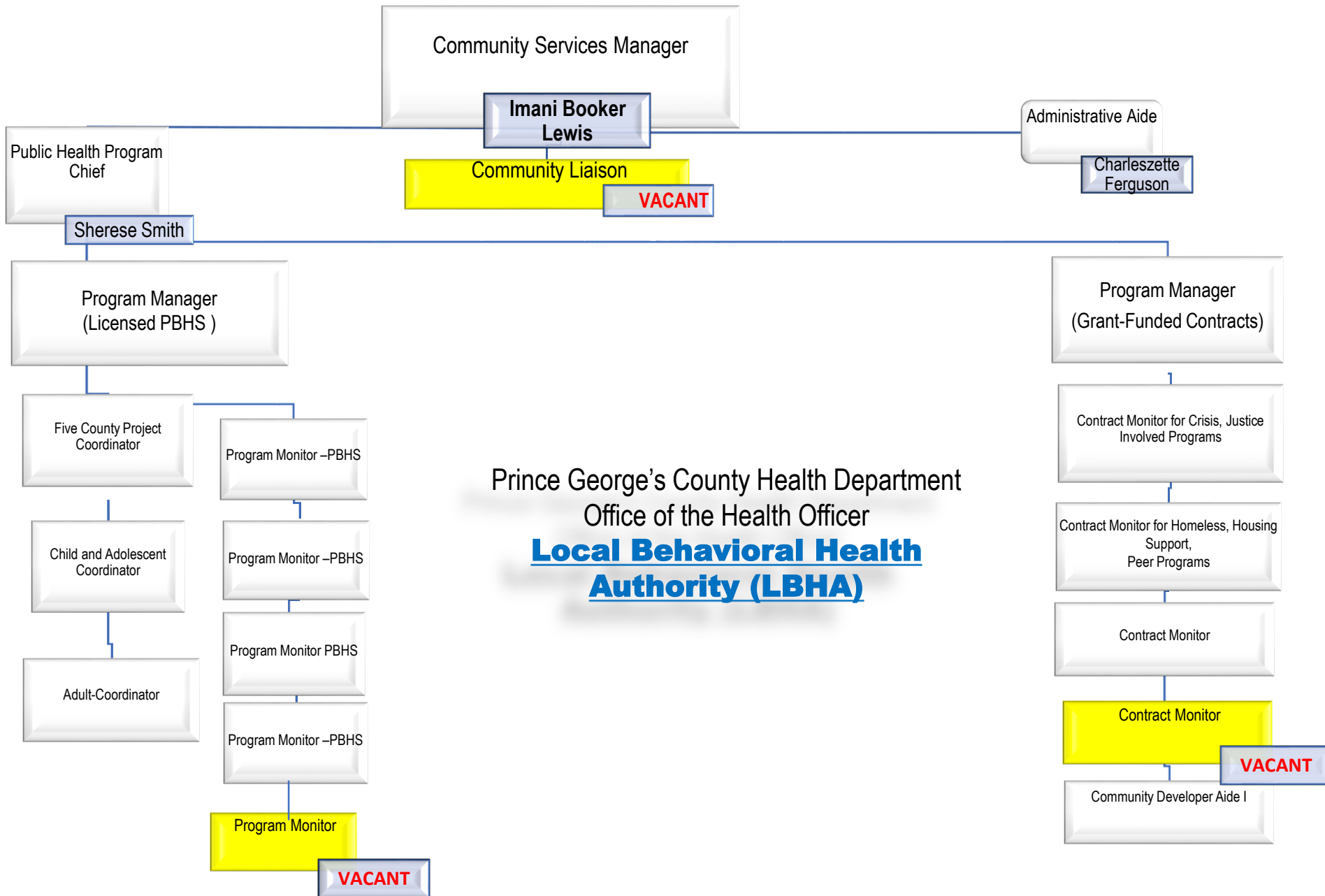


Presented to: The Prince George's County Board of Health

Presented by: Imani Booker- Lewis, LBHA Manager

April 9, 2024





# PRINCE GEORGE'S COUNTY LOCAL BEHAVIORAL HEALTH AUTHORITY

- The Local Behavioral Health Authority (LBHA) is a part of the County's Health Department.
- It is a state-mandated program responsible for all publicly funded Behavioral Health services in the County:
  - ❖ **Planning**- to engage with public and private sector partners to promote and support behavioral health.
  - ❖ **Managing**- to assess, plan, design and manage needed behavioral health programs and services at the local level while also supporting the carryout of statewide initiatives when needed.
  - ❖ **Monitoring accessibility & quality**- to promote quality and partner with regulatory authorities including the Medicaid Administrative Services Organization (ASO) to enable compliance.



# HOW DOES THE LBHA SUPPORT PRINCE GEORGE'S COUNTY RESIDENTS?

- The LBHA is often the first point of contact for residents seeking information about behavioral health treatment.
- The LBHA's goal is to ensure all residents receive the necessary services and support for mental health, substance use, and related disorders.
- The LBHA monitors all public behavioral health Services (PBHS) in the County.
  - Concerns or complaints should be reported to the LBHA promptly so that they can be addressed and resolved.
  - Residents should call (301) 856-9500 or email [PGC\\_LBHA@co.pg.md.us](mailto:PGC_LBHA@co.pg.md.us)



# LBHA PROGRAM MONITORS & CONTRACT MONITORS

- **LBHA Program Monitors:** provide oversight of PBHS providers and programs. There are four (4) program monitors, each assigned 42+ providers to monitor. Each monitor is responsible for performing onsite reviews and inspections (announced and unannounced as designated by BHA) prior to BHA licensure, upon site relocation, upon program or bed expansion and at least annually to determine compliance with site requirements.
- **LBHA Contract Monitors:** the LBHA manages all grant-funded programs. Two (2) contract monitors are responsible for overseeing 46 grant programs. They develop and manage the budget for PBHS service grants that have been awarded to the LBHA by BHA and other funding sources. They contract with behavioral health providers to implement local behavioral health programs and services



# LBHA SERVICE COORDINATORS

- The LBHA has (3) Service Coordinators, an **Adult Service Coordinator**, **Child & Adolescent Service Coordinator** and a **Crownsville Project Coordinator**, who are all responsible for connecting individuals and families in need of help accessing public behavioral health services and/or grant-funded programs.
- This includes referrals for: Targeted Case Management (TCM), Assertive Community Treatment (ACT), In-Home Intervention Program for Children (IHIP-C), residential placement, and coordination of care for youth with complex needs, individuals leaving state hospitals and individuals leaving correctional facilities.

-



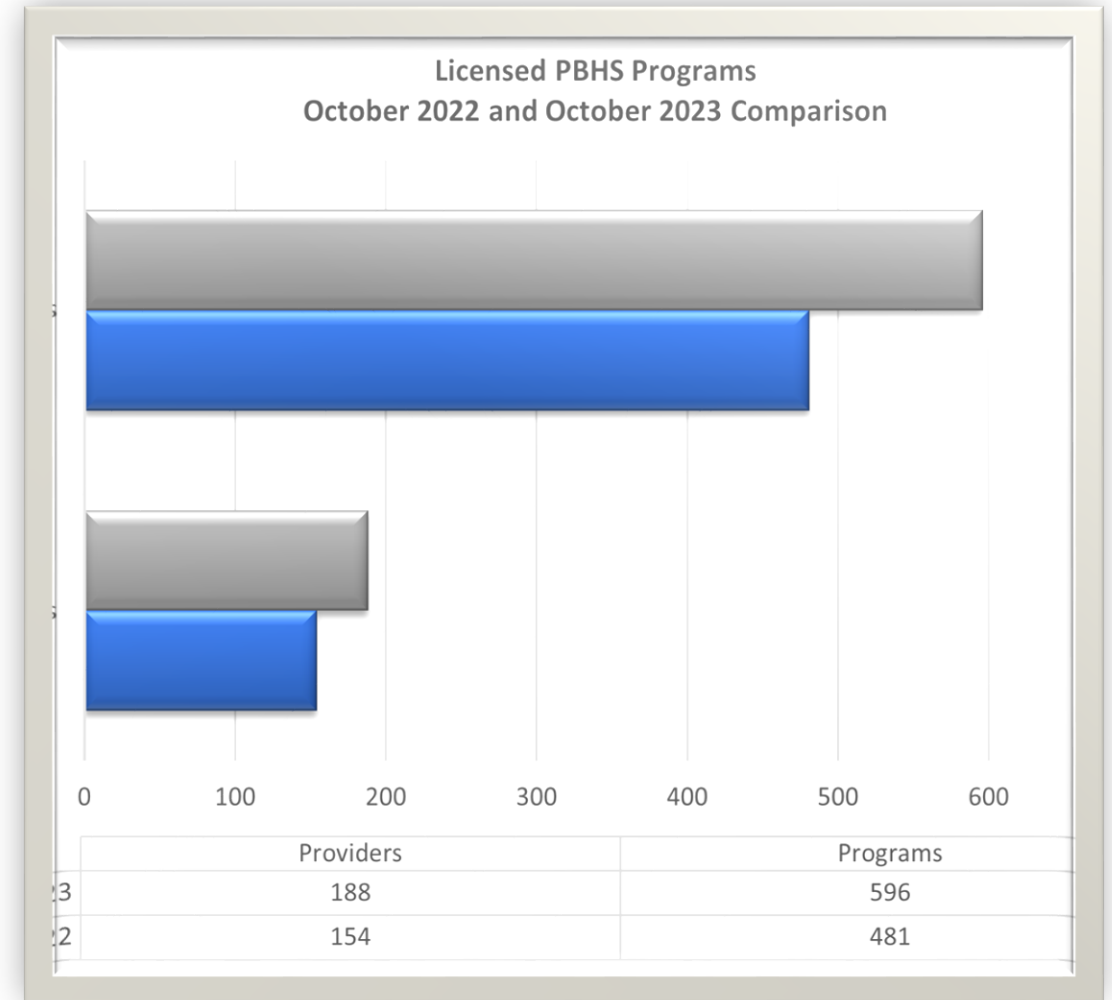
# Public Behavioral Health Services (PBHS) by Program Type and Population Served

- Outpatient Mental Health Centers (OMHC)
- Outpatient program (OP)
- Intensive Outpatient Program (IOP)
- Psychiatric Rehabilitation Programs (PRP)
- Mobile Treatment Services (MTS)
- Supported Employment Programs (SEP)
- Targeted Case Management (TCM)
- Partial Hospitalization Program (PHP)
- ASAM (American Society of Addiction Medicine) Level 0.5 (Early Intervention) – ASAM Level 3.7 (High intensity) Substance Use Disorder (SUD) Treatment Services

PBHS Program Type	Children & Adolescents	Adults	Both
Mental Health			
OMHC	79	93	70
PRP	90	110	85
Mobile Tx	5	12	4
SEP	2	11	2
TCM	1	2	0
Respite	1	0	0
SUD			
DUI Education	0	32	0
0.5 Early Intervention	18	34	16
OP	31	56	31
IOP	15	36	15
PHP	5	9	5
Residential 3.7	0	2	0
3.5	0	3	0
3.3	0	4	0
3.1	0	4	0
Opioid Treatment	0	1	0

# Statistics – Behavioral Health Providers

- There are 188 Licensed public behavioral health providers and 596 licensed programs.
- From October 2022 and October 2023
  - The number of licensed programs increased by 23%
  - The number of providers increased by 22%
  - Mental health inpatient beds increased by 12 %
  - The number of crisis beds remained the same
  - SUD residential programs increased by 88%



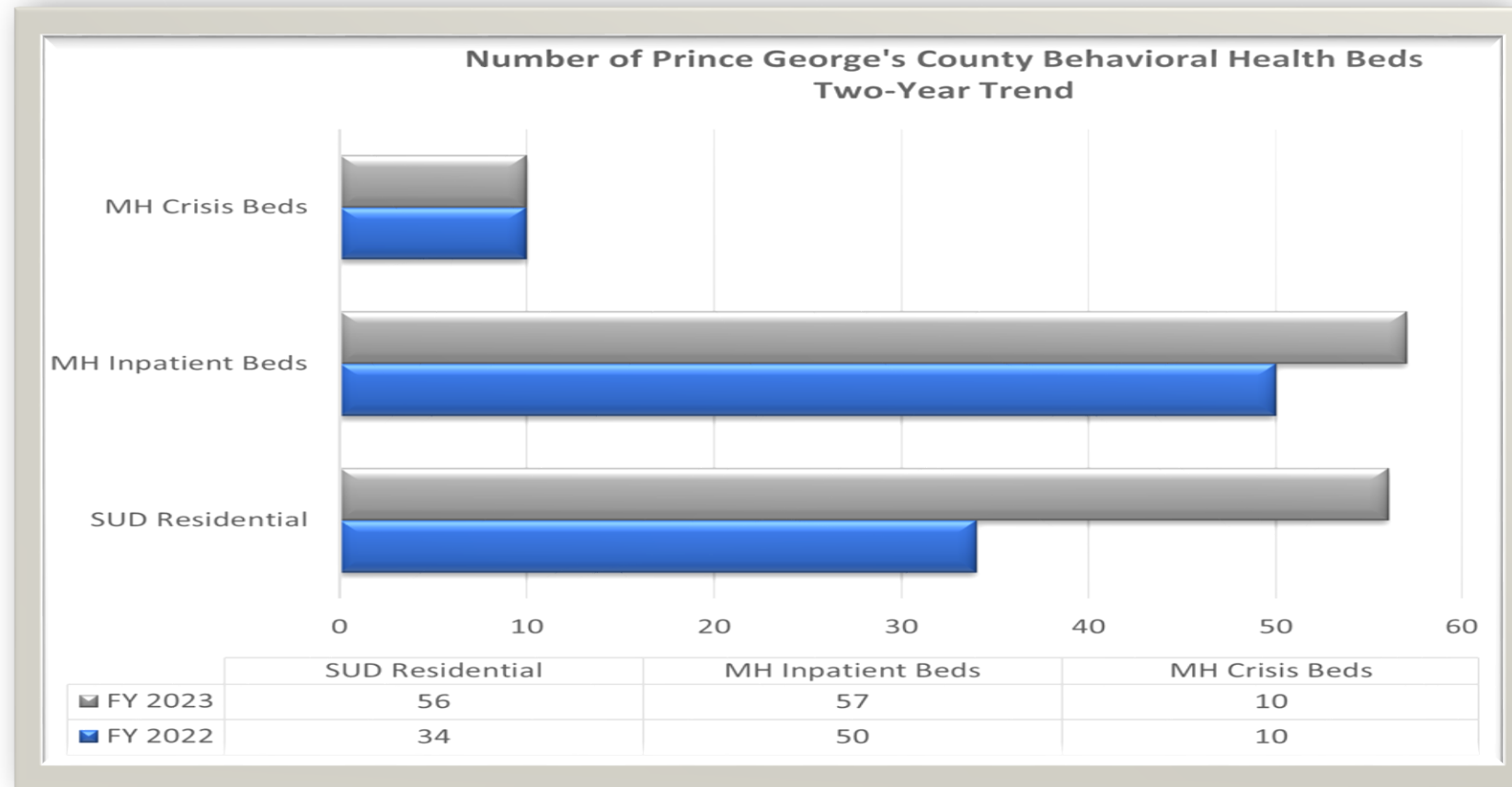


# BEHAVIORAL HEALTH RESIDENTIAL INPATIENT, AND CRISIS BED PROVIDERS

Behavioral Health Residential, Inpatient, and Crisis Bed Providers in Prince George's County				
Provider	Type of Service	Additional Details	Number of Beds	
			FY23	FY24
Hope House (Laurel, Maryland)	Substance Use Treatment	Residential	32	32
On-Time Home Health Services (Lanham, MD)	Substance Use Treatment	Residential	8	8
MedStar Southern Maryland (Clinton, MD)	Mental Health Treatment	Inpatient	24	24
Luminis Health (Greenbelt, MD)	Substance Use Treatment	Residential	8*	8*
Luminis Health (Greenbelt, MD)	Mental Health Treatment	Inpatient	16	16
Recovery Life Group (Upper Marlboro, MD)	Substance Use Treatment	Residential	16	16
Safe Journey House (Hyattsville, MD)	Mental Health Treatment	MH Crisis Beds	10	10
University of Maryland Capital Region Medical Center (Largo, MD)	Mental Health Treatment	Inpatient	26	26
TOTAL			140	140

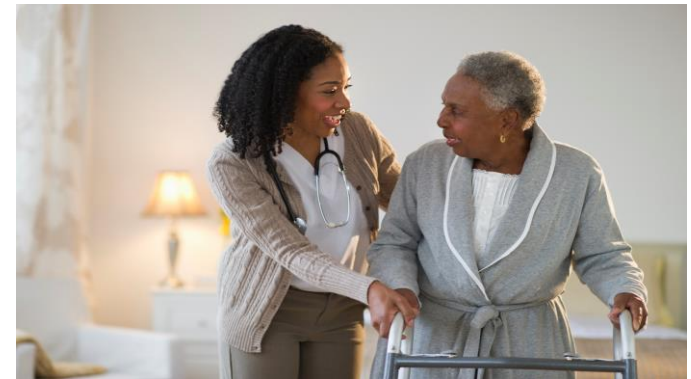


# MH AND SUD RESIDENTIAL BEDS: TWO-YEAR TREND



# Residential Rehabilitation Program (RRP) Beds in Prince George's County

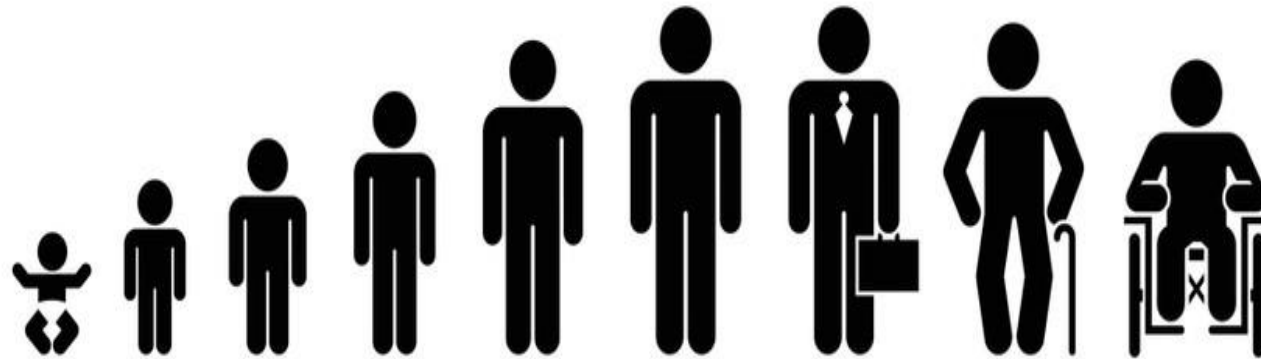
- **Residential Rehabilitation Program (RRP)** provides beds and supportive services to single individuals with severe mental illness stepping down from inpatient, incarceration or in a current state of homelessness. The goal of **RRP** is to provide services that will support an individual to transition to independent housing of their choice.
- There are **six (6) providers operating a total of 368 Residential Rehabilitation Program(RRP) beds** in the County. The LBHA's Adult Coordinator reviews applications submitted from community programs and state hospitals. Applications from State hospitals receive priority as well as In-County residents.
- **Medical Necessity Criteria** must indicate why the applicant cannot function independently in the community with other mental health services. There are two levels of care for which an applicant may apply: Intensive or General.



# LBHA MANAGEMENT OF GRANT FUNDED BEHAVIORAL HEALTH SERVICES

In addition to PBHS oversight, the LBHA awards and oversees grant-funded behavioral health service contracts. The LBHA currently monitors (46) grant funded services.

Through grant funding and participation in state and local planning activities, the LBHA makes certain that a full range of services are available across the lifespan for prevention, early intervention, recovery, and peer support services.



# LBHA – GRANT FUNDED BEHAVIORAL HEALTH SERVICES

- **Transition Age Youth** – Delivers intensive services in an RRP setting, skills development and case management to individuals ages 16 to 25, who are transitioning from child and adolescent services to adult services. Funding Amount: \$246,609 Capacity: 6 Transition Age Youth (TAY) Provider: Psychotherapeutic Rehabilitation Services, Inc.
- **First Episode Psychosis** – multicomponent, multidisciplinary treatment that provides community-based, person-centered, recovery-oriented services and support, to ages 15-30, who are within two years of the initial onset of psychotic symptoms. Funding Amount: \$359,460 Capacity: 25 TAY and Young adults Provider: Family Services, Inc./Sheppard Pratt
- **In-Home Intervention Program for Children (IHIP-C)** – provides 24/7 individualized therapeutic intervention services to families with youth, ages 5-17, at risk of entering or returning from an out-of-home placement or RTC. Total Grant for Anne Arundel & Prince George's is \$333,000. The LBHA Five County Project Coordinator monitors referrals Capacity: 12 children and adolescents Provider: Center for Therapeutic Concepts



# LBHA – GRANT FUNDED BEHAVIORAL HEALTH SERVICES

- **Therapeutic Nursery Program** – is a program designed for preschool children and their families ages 3 to 5 years old who are experiencing social, behavioral, and emotional challenges and are not able to learn in a generalized preschool program. Funding Amount: \$548,249 Capacity: 12 - preschool children Provider: The Reginald S. Lourie Center
- **Adolescent Clubhouse** – Provides non-clinical services to Prince George's County youth ages 12 to 17 with primary substance abuse disorders and/or co-occurring mental health disorders that may hinder the recovery process. Services include case management and advocacy, support and life skills groups, tutoring and computer lab, GED and college preparation, job readiness and coaching, and enriching field trips. Funding: \$922,187 Capacity - 40 unduplicated adolescents or youth still in high school Provider: Prince George's County Health Department



# LBHA – GRANT FUNDED BEHAVIORAL HEALTH SERVICES

•**Maryland Community Criminal Justice Treatment Program (MCCJTP)** – mental health and case management services to individuals in the Department of Corrections (DOC) who have been identified as having serious mental illness and/or are at risk for re-institutionalization. Funding Amount: \$81,047 Capacity: 530 unduplicated detainees Provider: Department of Corrections

•**Trauma Addictions Mental Health And Recovery program (TAMAR)** – psycho-educational groups in DOC, individual sessions, medication referrals, case management and aftercare planning and follow-up to women who have experienced trauma.

Funding Amount: \$64,105 Capacity: 80 – 85 individual detainees. Provider: Department of Corrections

• **Mental Health Court Social Worker** – Provides support to the Mental Health Court program that links inmates with mental illness, who have misdemeanor charges to mental health treatment as a condition of their release. Funding Amount: \$94,512 Capacity: 100% or district court drug court clients. Provider: Department of Corrections



# LBHA – GRANT FUNDED BEHAVIORAL HEALTH SERVICES

- **Jail-Based Substance Abuse Treatment (JBSAT)** – Also known as the Rebirth Program and is located within the DOC, provides SUD screening, assessment, and evidenced-based treatment to self and court-referred individuals. In addition, referrals are made to aftercare and community resources upon release into the community. Funding Amount: \$951,908 Capacity: 300 for assessments and 250 individuals for treatment. Provider: Department of Corrections
- **Medications for Opioid Use Disorders (MOUD) Program** – Provides Medicated Assisted Treatment (vivitrol and suboxone) services to individuals in the DOC. Services include peer recovery specialist support, case management services, and reentry services upon release. Funding Amount: \$479,500 Capacity: 75 individuals Provider: Department of Corrections
- **Substance Abuse Treatment Outcomes Partnership (STOP)** - provides Hospital Diversion and Offender Reentry programs (ORP) which utilize SBIRT and person-centered and recovery-focused models to identify individuals among the target populations and start them on their way to recovery. The goal is to reduce hospital readmissions and recidivism. Funding Amount: \$804,540 Capacity: 60 ORP & 250 hospital liaison screenings Provider: PGCHD- BHS





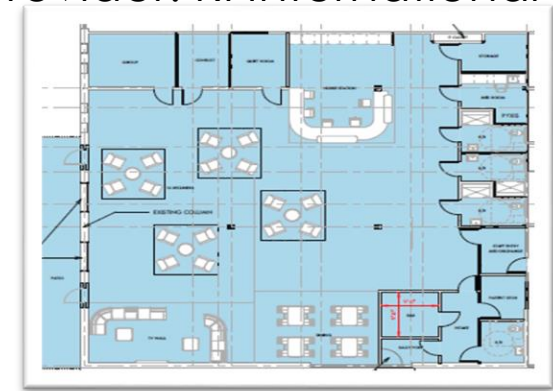
# LBHA – GRANT FUNDED BEHAVIORAL HEALTH SERVICES

- Drug Court** - provides case management for the preparation of documents for court, time spent in court, non-reimbursable clinic case management associated with SUD treatment services. Funding Amount: \$147,146 Capacity: 50 adults Provider: PGCHD- BHS
- Urgent Care Services** – funding support for iMind BH Urgent Care Operations. Hours of operation are M-F, Monday/Wednesday/Friday 10am to 7pm and Tuesday and Thursday 10am - 4pm. Funding Amount: \$128,188 Capacity: All Ages Provider: iMind BH LLC.
- 988 Call Center** – Funding to enhance the 988-Call Center operated by Community Crisis Services, Inc., for staffing, equipment, technology and support transition from 211 Press 1. Free and confidential 24/7 behavioral health call/chat/text line. Funding Amount: \$2,653,426 Capacity: All ages Provider: Community Crisis Services, Inc.



# LBHA – GRANT FUNDED BEHAVIORAL HEALTH SERVICES

- **MCT Pilot** – Prince George's County is 1 of 6 jurisdictions in the State awarded the Pilot grant award to provide one-time funding to support the MCT program to become a licensed program eligible for reimbursement from Maryland Medicaid in the PBHS. Funding Amount: \$895,791 Capacity: All Ages Provider: iMind BH (MCT)
- **BHCSC Pilot** – Prince George's County is 1 of 6 jurisdictions in the State awarded the Mobile Crisis Team \_ Behavioral Health Crisis Stabilization Center grant award pilot to provide one-time funding to support the development and implementation of Mobile Crisis Teams (MCTs) and Behavioral Health Crisis Stabilization Centers (BHCSCs) to prepare to become licensed programs eligible for reimbursement from Maryland Medicaid in the public behavioral health system. Funding Amount: \$1,221,246 Capacity: All Ages Provider: RI International



# LBHA – GRANT FUNDED BEHAVIORAL HEALTH SERVICES

- **Crisis Response System** – Services that can provide on-site emergency intervention for all ages including assessment and brief treatment for psychiatric crises. Resources available include mobile response team (MRT) services, urgent care appointments, and emergency disaster response following the crisis. Funding Amount: \$1,039,403 Capacity: All ages Provider: iMind BH LLC
- **Mobile Response Team** – Funding for one clinician who is a part of a two-person clinician and peer team. MRTs are dispatched to community locations to provide immediate assessment, intervention and treatment to people experiencing a psychiatric emergency. Teams partner with First Responders and other community resources such as crisis intervention agencies, shelters and others. Dial 9-8-8 for MRT services. Funding Amount: \$90,080 Capacity: All ages Provider: iMind BH LLC



# LBHA – GRANT FUNDED BEHAVIORAL HEALTH SERVICES

- **MRT Expansion** – adds additional MRT clinicians and peers and supports the iMind Urgent Care Center. Funding Amount: \$733,320 Capacity: All ages Provider: iMind BH LLC
- **Crisis Intervention Team (CIT)** - innovative first-responder model of police-based crisis intervention training to help persons with mental disorders and/or addictions access medical treatment to avoid criminal justice system involvement due to illness-related behaviors. It also promotes officer safety and the safety of the individual in crisis. Funding Amount: \$60,249 Capacity: 4 Trainings for First Responders Provider: iMind BH LLC
- **Residential Rehabilitation Program (RRP)** -Medical Complexity Enhancement – Federal program that provides nursing services in an RRP environment to older adults with mental illness. Funding: \$61,335 Capacity: Older adults in VOA geriatric RRP program Provider: Volunteers of America Chesapeake
- **Residential Rehabilitation Program (RRP)**-Medical Complexity Enhancement – Provides nursing services in an RRP environment to older adults with mental illness. Funding: \$39,188 Capacity: 24 Older adults in VOA geriatric RRP program Provider: Volunteers of America Chesapeake



# LBHA – GRANT FUNDED BEHAVIORAL HEALTH SERVICES

- **Senior Outreach** – Provides outreach and training to the elderly, family members, professionals, and community members on issues related to mental illness in older adults. Funding: \$29,489 Capacity: 200 seniors or those working with seniors Provider: NAMI Prince George's
- **Education and Training** - Provide Mental Health First Aid Training and other training mental health-related training to the community and providers of behavioral health services. Funding: \$10,074 Capacity: Train 300 families/mental health professionals Provider: NAMI Prince George's
- **Behavioral Health in Assisted Living** – Provides psychogeriatric services to elderly persons with mental illness (MI) in an assisted living home. Funding: \$96,360 Capacity 5 older adults Provider: Norfield Acres/Adventures One Assisted Living Home
- **Outreach with Treatment Services** – Identifies treatment needs and linkages to needed services for homeless individuals. Funding: \$192,622 Capacity: Outreach to 150 and enroll 80 Provider: QCI Behavioral Health LLC



# LBHA – GRANT FUNDED BEHAVIORAL HEALTH SERVICES

- **Projects for Assistance In Transition from Homelessness (PATH)** – Assists homeless individuals with securing permanent housing. Funding: \$64,181 Capacity: 100 individuals Provider: QCI Behavioral Health LLC
- **SSI/SSDI Outreach and Recovery (SOAR)** – Assists individuals with MI with securing SSI/SSDI benefits. Funding: \$44,691 Capacity: 25 individuals Provider: Department of Social Services
- **Homeless I.D. Project** – LBHA processes applications for requests for birth certificates and I.D. cards for individuals with MI who experience homelessness. Funded through the Anne Arundel (5) County Project and the amount is \$10,000. Capacity- until funds end Provider: LBHA
- **State Care Coordination** – Provide care coordination services to individuals in SUD residential treatment programs or actively engaged in outpatient services. Assistance is provided with accessing recovery support services. Funding: \$312,191 Capacity: 540 unduplicated individuals Provider: Destiny Power and Purpose



# LBHA – GRANT FUNDED BEHAVIORAL HEALTH SERVICES

- **Continuum of Care** – Supportive housing program for individuals who have a mental illness and forensic history. Funding: \$741,619 Capacity: rental assistance for 15 units per month Provider: Volunteers of America Chesapeake
- **HMIS (Homeless Management Information Services) Data Entry** – funding for data entry support to collect and enter data regarding CoC participants into the local HMIS. Funding: \$2,289 Capacity: Provider: Volunteers of America Chesapeake
- **Mental Health Client Support Services** – provides support funds which are administered as funding of last resort for the purchase of emergency goods to enable an adult to access or retain community-based mental health services and shall be linked to the client's treatment, rehabilitation, or recovery plan goals. Funding: \$9,455 Capacity: Until funding ends Provider: LBHA
- **Maryland Recoverynet (MDRN)** – funding of last resort for the purchase of emergency goods and the provision of time-limited services to enable an individual to access or retain community-based behavioral health services and shall be linked to the client's clinical and/or SUD recovery support plan goals. Funding: \$14,300 Capacity: Until funding ends Provider: LBHA



# LBHA – GRANT FUNDED BEHAVIORAL HEALTH SERVICES

- **SUD Community Case Management** - provide behavioral health screening, referral, and ancillary linkages to substance use disorder, mental health disorder, or co-occurring SUD and MH disorder services for individuals at-risk of continued substance use or relapse who have been referred by public and private agencies. Funding: \$601,984 Capacity: 475 individuals unlimited Provider: PGCHD- BHS
- **American Sign Language** – Provide interpreting services for deaf and hard of hearing consumers with mental illness and their families. Funding: \$181,428 Capacity a total of 417 hours of ASL interpreting services Provider: Family Service, Inc.
- **Signing Therapists** – Provide therapeutic services for deaf or hard of hearing consumers participating in clinic and rehabilitation services. Funding: \$214,922 Capacity - 59 unduplicated customers Provider: Family Services, Inc.
- **Recovery, Pregnancy Post-Partum Women Project** – Provides non-clinical assistance and recovery support to assist pregnant and postpartum women, as well as women with children, who have an opioid or other substance-related disorder to maintain recovery. Funding: \$72,977 Capacity – 20 women Provider: PGCHD





# LBHA – GRANT FUNDED BEHAVIORAL HEALTH SERVICES

- **Strengthening Families in Recovery Program (SFIR)** – funding for additional services for pregnant and postpartum women and women with children in recovery. Services include expungement of criminal records, to support families that need documents/certificates from vital records (i.e. birth certificates), and for transportation for job appointments, school appointments, medical, mental health and other appointments that benefit the family. Funding: \$11,250 Capacity: Families must be enrolled in the RPPW Program Provider: PGCHD- BHS
- **Child Welfare Involved Families Services (House Bill 7/Senate Bill512)** – SUD counselors work collaboratively with the Department of Social Services to conduct assessments of referred individuals and families who are identified in the child welfare system as having a substance-related disorder. Funding: \$330,189 Capacity: Assess 100 individuals Provider: PGCHD
- **Temporary Cash Assistance** - provide screenings and case management services to residents referred by the DSS. Applicant and recipients that screen positive for substance use are referred to community providers for a clinical assessment and/or treatment. One licenses staff person stationed at each location: Hyattsville, Temple Hills, and Landover, Maryland. Funding: \$399,145 Capacity: 100% of adults that apply for TCA Provider: PGCHD



# LBHA – GRANT FUNDED BEHAVIORAL HEALTH SERVICES

- **Peer Support and Advocacy Programs** – Peers provide advocacy, support and education to individuals with mental illness, their families and the community. Funding: \$26,717 Capacity 6 groups of 30 Provider: NAMI Prince George's
- **Wellness and Recovery Centers** – Offer peer support services and provide adults with the ability to connect with others in recovery while navigating local support services and overcoming barriers to their own personal recovery. Funding: \$155,457 Capacity - 65 unduplicated individuals Provider: On Our Own of Prince George's
- **Peer to Peer Programs (Federal funding)** – Unique in that the delivery of services is facilitated exclusively by individuals who identify as having lived experience in behavioral health recovery. Services focus on supporting recovery and the establishment of life in the community for individuals with forensic history. Funding: \$509,715 Capacity 100 individuals Provider: PGCHD
- **Peer to Peer Programs (State funding)** – Unique in that the delivery of services is facilitated exclusively by individuals who identify as having lived experience in behavioral health recovery. Services focus on supporting recovery and the establishment of life in the community for any individual with SUD history. Funding: \$307,196 Capacity 100 individuals Provider: PGCHD



# LBHA – GRANT FUNDED BEHAVIORAL HEALTH SERVICES

- **Telehealth Equipment Pilot Program** – Volunteers of America and Advanced Behavioral Health loan clients HIPAA-compliant smartphones or tablets, with internet access and video conferencing capability. Technical assistance is provided to assist with access to treatment services. Ends June 30, 2024. Funding: \$43,500 Capacity: Adults receiving PBHS treatment at VOA and ABH – 25 clients each Provider: Volunteers of America Chesapeake and Advanced Behavioral Health



# New Initiatives

- **Suicide Awareness and Prevention Committee-** The LBHA is creating a Suicide Prevention and Awareness Committee charged with reviewing epidemiological data on suicide in the County and using the reviewed findings to inform community education, presentations and trainings on suicide, recovery and resilience.
- **Crisis Intercept Mapping-** In FY 2024, the LBHA met with members of the Behavioral Health Administration (BHA), SAMHSA, and the Hartford County Commission on Veterans Affairs to discuss the rollout of Crisis Intercept Mapping (CIM), a significant area of focus related to preventing suicide and behavioral health crisis among the Service Member, Veteran, and Family (SMVF) community in Prince George's County. As the pilot site for the state of Maryland, Hartford County has extended support to the LBHA in the next phase to bring CIM to Prince George's County.
- **Spring into Wellness: Adult Behavioral Health Expo:** The LBHA in collaboration with the Department of Parks and Recreation, Prince George's County, is excited to announce an upcoming community event aimed at promoting behavioral health, physical health, and general health and wellness in our area. May 11<sup>th</sup> at the Southern Regional Technology and Recreational Complex in Fort Washington, MD
- **Go Green Campaign in May:** We're partnering with the Children's Mental Health Matters Campaign to bring awareness to Mental Health Awareness Month. The LBHA is purchasing green light bulbs to distribute the green bulbs to County buildings, and to PBHS providers. We are not only going green for Children's Mental Health Matters week but for the entire month of May.

