



Aisha N. Braveboy
County Executive



Michael D. Johnson, P.E.
Director

Department of Public Works and Transportation **ELEVATING THE SNOW & ICE PROGRAM**

January 22, 2026

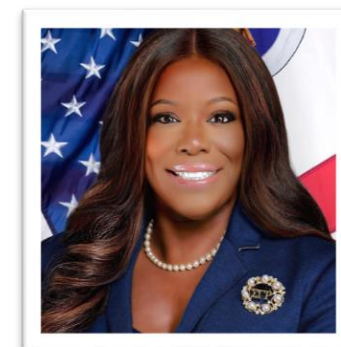
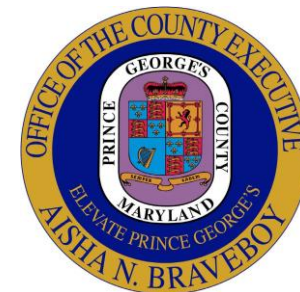


Aisha N. Braveboy
County Executive

Project ELEVATE: Snow Program



Michael D. Johnson, P.E.
Director



Presentation for

The Transportation, Infrastructure, Energy, and Environment Committee

Thomas Dernoga, Chair

Eric Olson, Vice Chair

AGENDA

1. **Elevated Last Year's Concerns**
2. **Snow Operations Briefing**
 - Snow Timeline
 - Organization Chart & Key Roles
 - Snow Maps & Districts
 - Pre-Storm Monitoring & Operation Levels
 - Multi-layered Operational Response
 - Technology & Tracking Performance
3. **Elevated Snow Strategy**
 - Enhanced 311 Strategies
 - Increased Agency Partnerships
 - New Snow Programs
 - Improved Communications & Council Engagement
4. **Where We Are Today**





Elevating Last Year's Concerns



Response Time due to
Lack of Resources

ELEVATED: Snow solicitation is open. CEX approved open bid for heavy equipment.

Improve
Communication with
County Council

ELEVATED: New legislation requires DPW&T to submit situational awareness reports to County Council.

AVL Tracking &
Monitoring Issues

ELEVATED: AVL tracking technology has been repaired and tested.

311 Response &
Unclear Protocol

ELEVATED: DPW&T and OCR met to proactively deliver clearer public messaging.

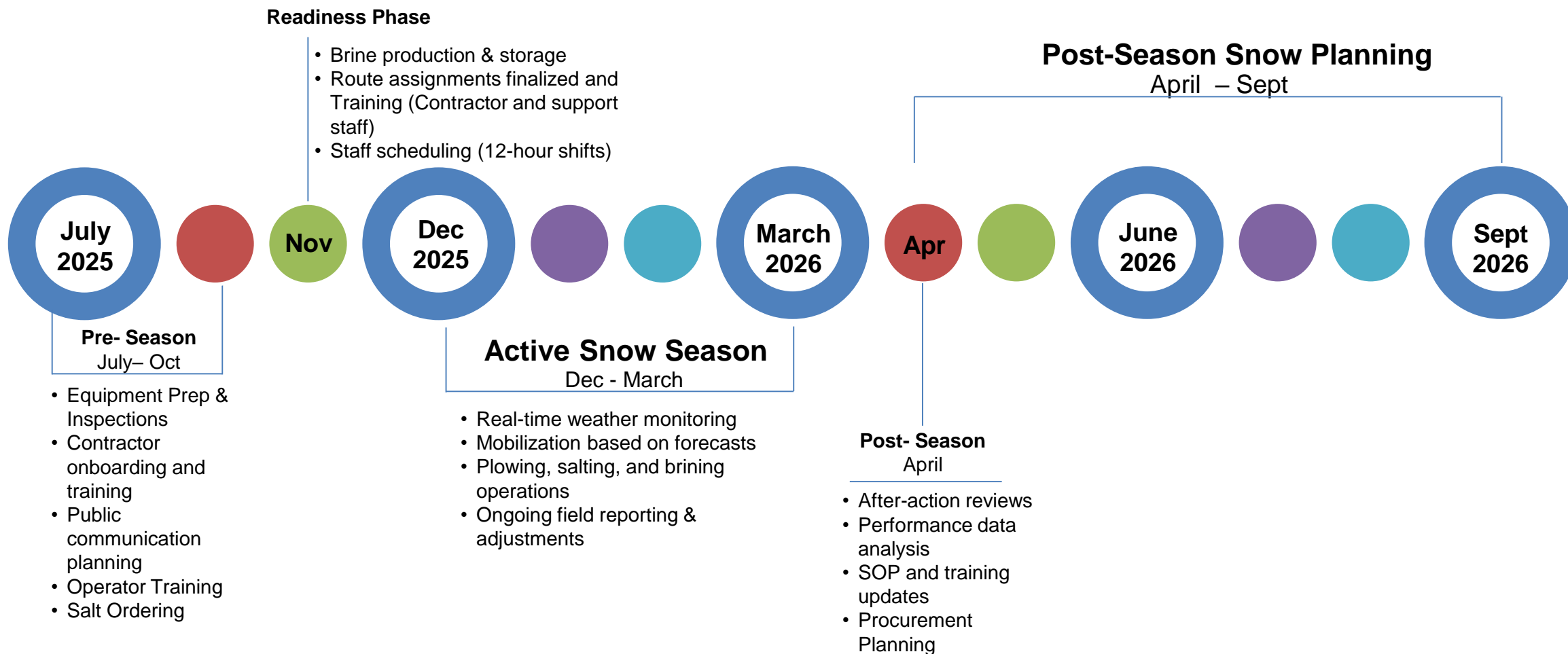
Snow Operations Overview



- **Preparedness:** Pre-season equipment checks, stockpiling salt/sand, staff training
- **Monitoring:** 24/7 weather tracking & storm response coordination
- **Plowing & Treatment:** Pretreatment (brining), prioritize primary roads, emergency routes, and critical facilities
- **Deployment:** Staged crews/equipment based on storm severity & timing
- **Communication:** Public alerts, resident updates, inter-agency coordination
- **Post-Storm:** Cleanup, de-icing, equipment maintenance, materials restocking

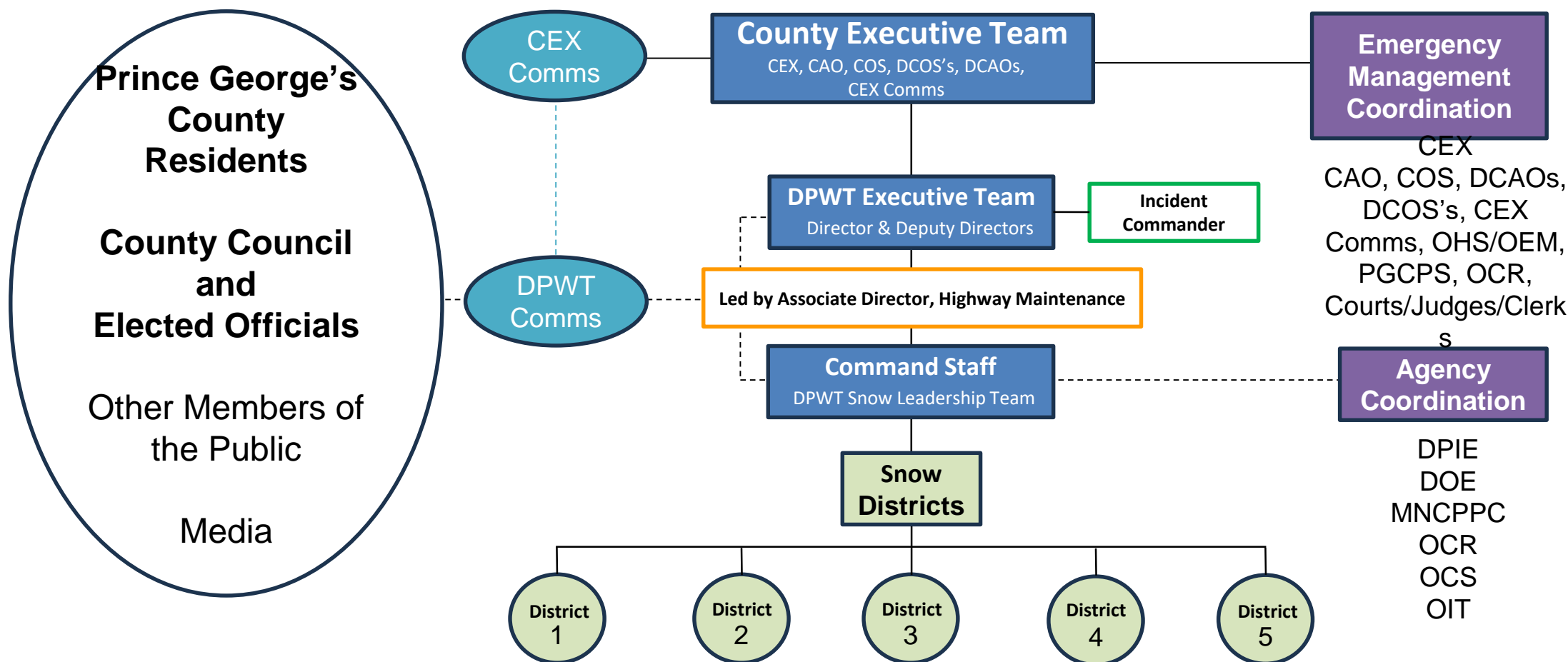


Snow Operations Timeline

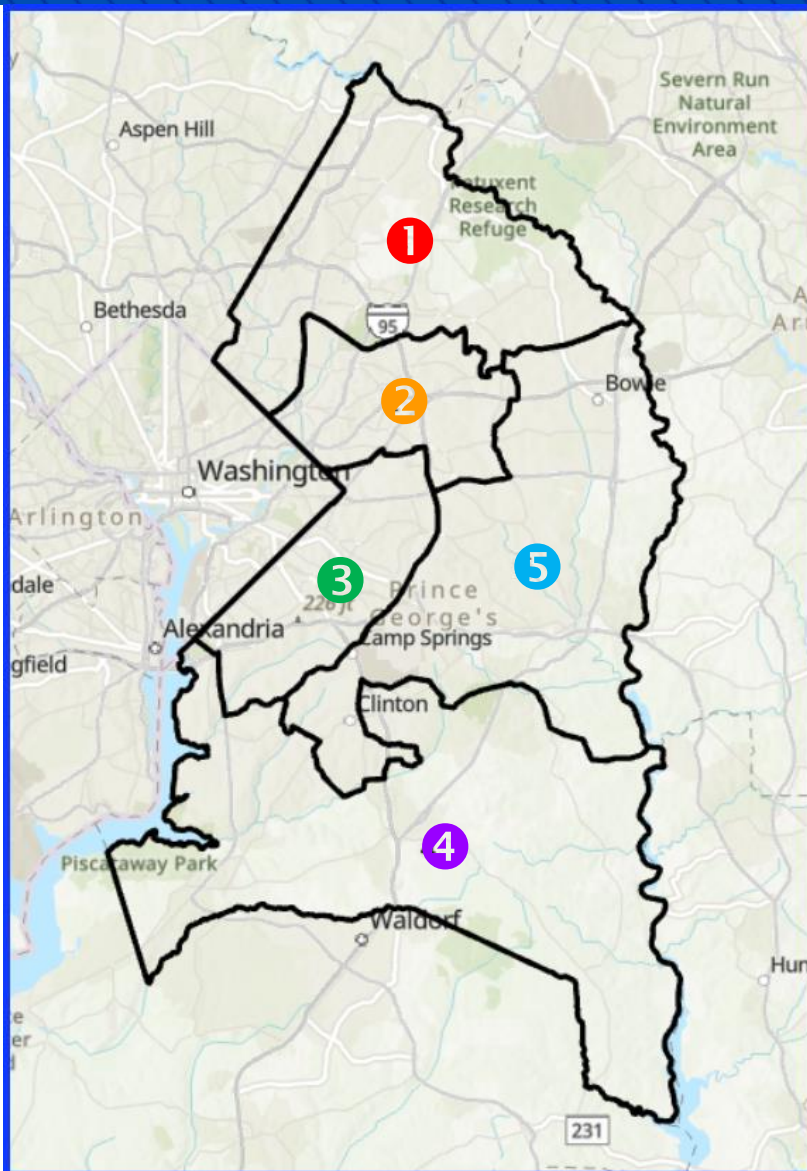




Snow Operations: Organizational Chart



Snow Operations: Snow Maps*



SNOW DISTRICT 1

Glenn Dale Maintenance Shop

7317 Northern Avenue. Glenn Dale

SNOW DISTRICT 2, 3, AND 5

D'Arcy Road Maintenance Facility

8400 D'Arcy Road, Forestville

SNOW DISTRICT 4

Brandywine Maintenance Shop

12911 Cherry Tree Crossing Road, Brandywine

**IMPORTANT: DPW&T operations for snow, sweeping, 311 response and many other critical services are organized by Snow District not councilmanic districts.*

What Council areas do Snow Districts cover?

SNOW DISTRICT 1

- Council District 1 (TD)
- Council District 2 (WF)
- Council District 3 (EO)
- Council District 4 (IW)

SNOW DISTRICT 2

- Council District 3 (EO)
- Council District 4 (IW)
- Council District 5 (SAS)
- Council District 6 (WB)

SNOW DISTRICT 3

- Council District 5 (SAS)
- Council District 6 (WB)
- Council District 7 (KO)
- Council District 8 (EB)

SNOW DISTRICT 4

- Council District 8 (EB)
- Council District 9 (SH)

SNOW DISTRICT 5

- Council District 4 (IW)
- Council District 6 (WB)
- Council District 8 (EB)
- Council District 9 (SH)

Council District 1: CM Thomas Dernoga (TD)

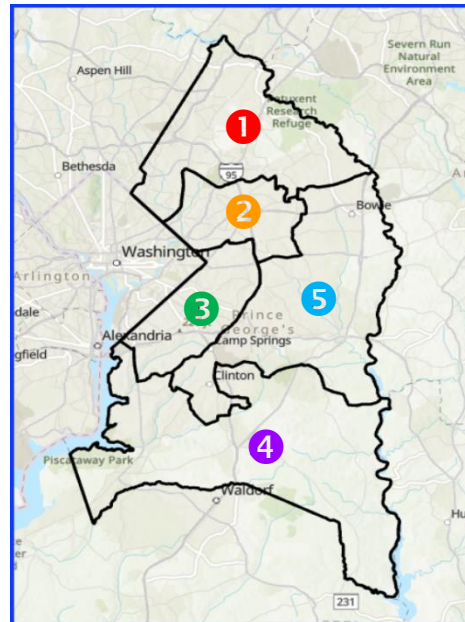
Council District 2: CM Wanika Fisher (WF)

Council District 3: CM Eric Olson (EO)

Council District 4: CM Ingrid Watson (IW)

Council District 5: CM Shayla Adams-Stafford (SAS)

Council District 6: CM Wala Blegay (WB)



Council District 7: CM Krystal Oriadha (KO) - Vice Chair

Council District 8: CM Edward Burroughs (EB) - Chair

Council District 9: CM Sydney Harrison (SH)

At Large Member: CM Calvin Hawkins, II (CH)

At Large Member: CM Jolene Ivey (JI)

Pre-Storm Monitoring

Weather Forecasting Sources

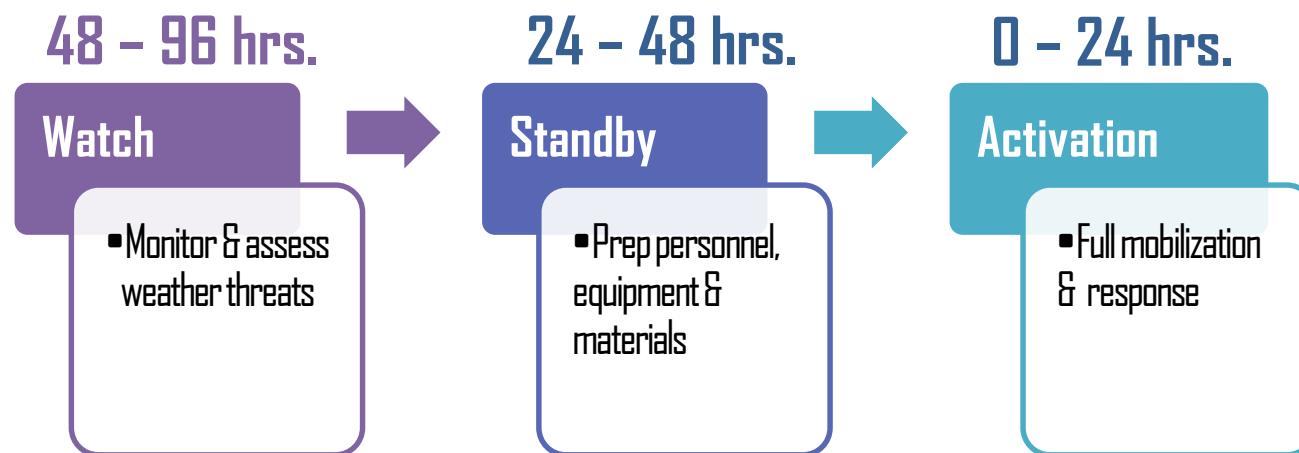
- AccuWeather
- National Weather Service (NWS)
- County Road Weather Information System (RWIS)

Storm Alerts Include

- Timing, type of precipitation
- Accumulation forecasts
- Road condition projections

Mobilization

- Frequent briefings to adjust strategy
- Real-time updates guide brining, plowing & contractor deployment





Snow Operation Levels, Roadway Priority, & Shifts



SNOWFLAKE Operation

Salting operation of icy spots,
hilly areas and bridges

DPW&T ONLY Operation

Salting operation with less than
2 inches of snow

MODIFIED Operation

Plowing
operation of 2-4 inches of snow

FULL Operation

Multiple day plowing operation
with greater than 4 inches of
snow predicted

BLIZZARD Operation

Snow accumulation that must
be removed from the roadway
with heavy equipment

Snow Plowing Priority

PRIMARY ROADS → SECONDARY ROADS → RESIDENTIAL STREETS

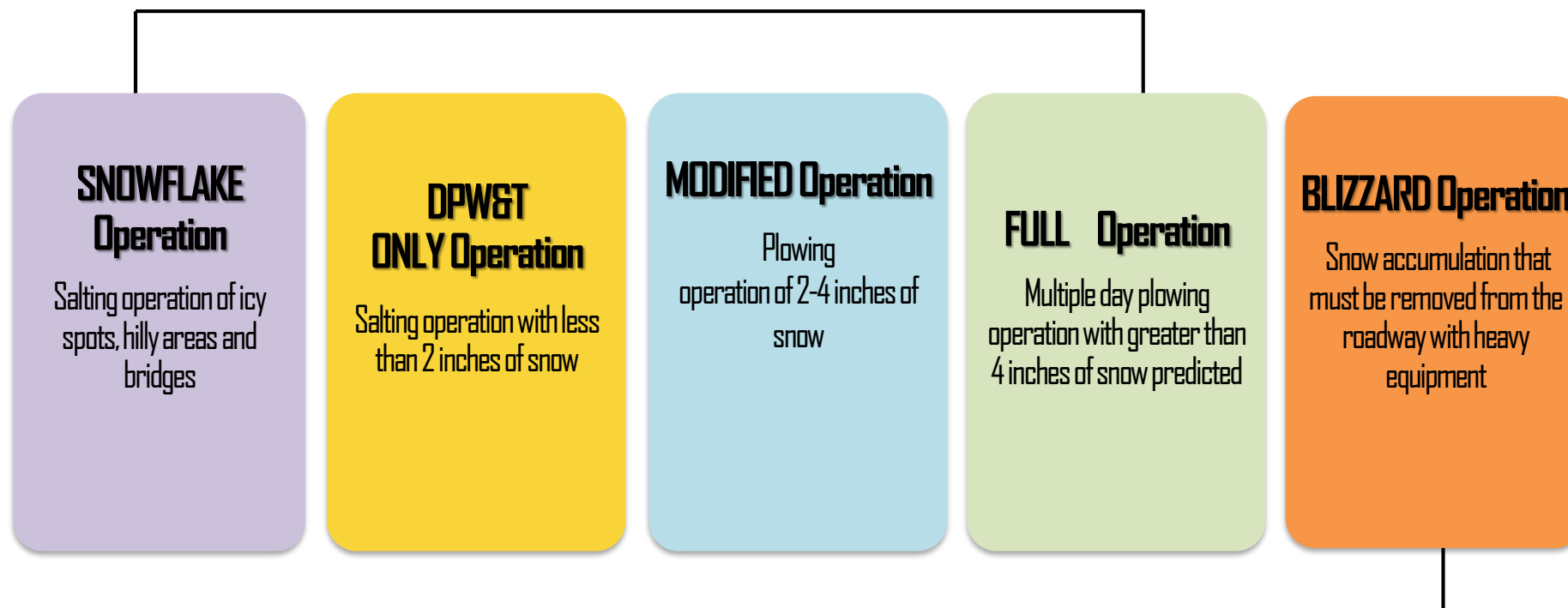
24 - hour Coverage

12 - hour **YELLOW** Shift

12 - hour **ORANGE** Shift

DPW&T and Homeland Security's Role

Agency Incident Commander: Led by DPW&T
Snow Removal Lead: DPW&T



Agency Incident Commander: Led by OHS & Emergency Partners
Snow Removal Operations Lead: DPW&T



Aisha N. Braveboy
County Executive

IMPORTANT:

Decisions Will Be Driven By Environmental Conditions



Michael D. Johnson, P.E.
Director

PRIMARY ROADS → SECONDARY ROADS → RESIDENTIAL STREETS

Snow and ice removal involves a complex, sequenced order of operations. Decisions must be driven by environmental conditions.

Administration

1



Snow Planning, Reporting, Communications, Budget, HR, Procurement, Contractor Mgmt, Active Snow Operation Decisions

Ongoing

Primary then Secondary Roads

2



Inspector



Inspector



Complete

*Decisions driven by environmental conditions

3

Residential Streets



Inspector



Inspector

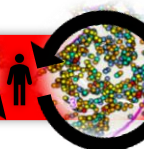
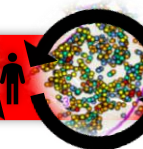
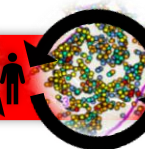
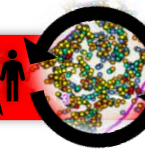
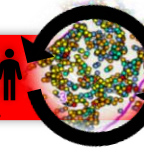
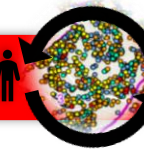
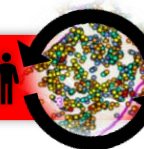
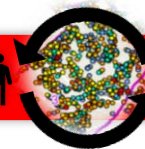
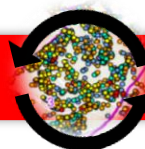


Complete

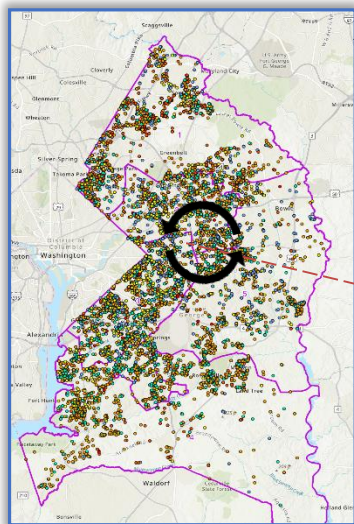
*Decisions driven by environmental conditions

4

311 Requests



Complete



IMPORTANT: Call Center will open 24 hours after snow stops to reduce number of 311 complaints that will be addressed during the active snow operation.

Technology: Performance Tracking

StormTrak

Live event logging: truck dispatch times, salt/brine applied, route completion status. Automated end-of-shift summary reports.

Automatic Vehicle Locator (AVL) Tracking

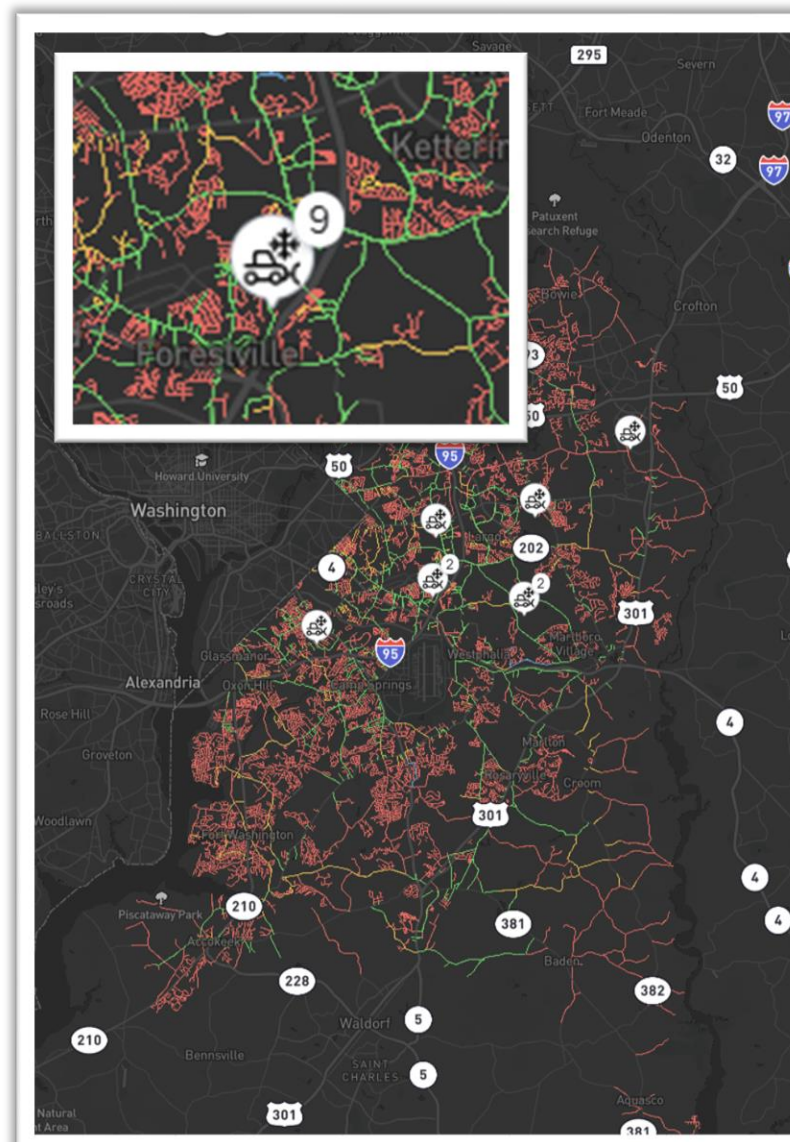
Real-time GPS on every plow to monitor coverage gaps and productivity.

Road Weather Information Systems (RWIS) & AccuWeather

RWIS station network (15 nodes): pavement temperature, humidity, surface ice detection. AccuWeather alerts integrated hourly into SCC dashboard.

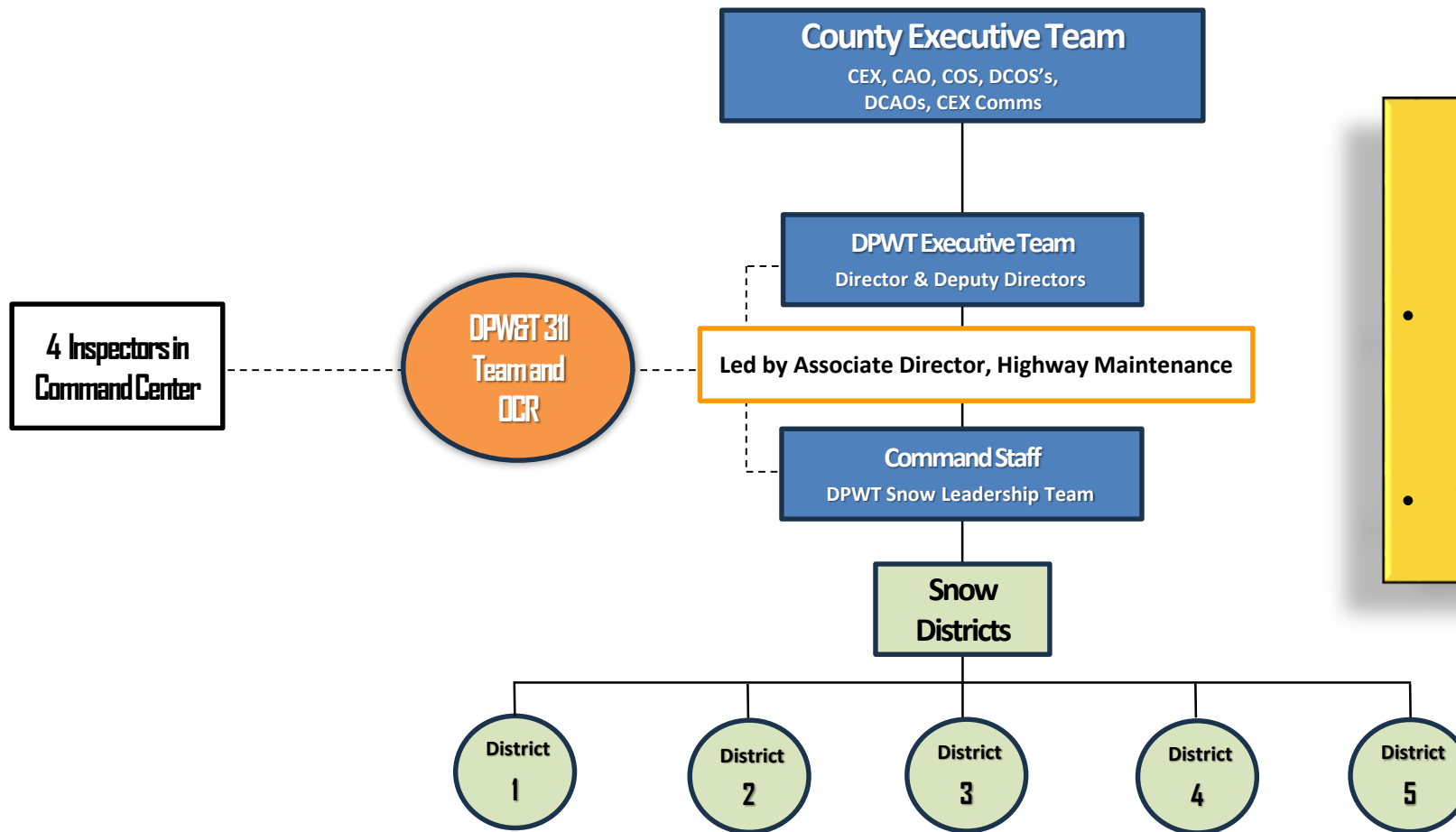
Dashboards & Reporting

Executive dashboard: key metrics (lane-mile plowed, tonnage used) updated every 30 minutes. Post-storm analytics: compare planned vs. actual performance.





Elevated Snow Strategy: New 311 Snow Team



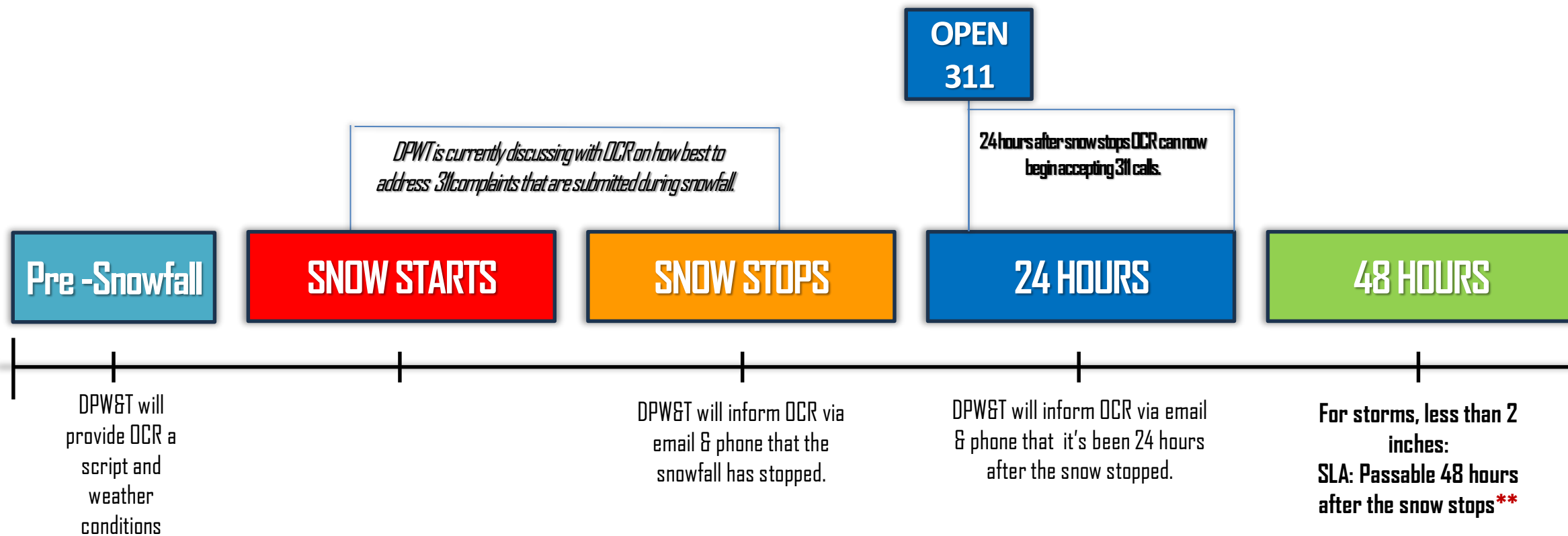
Newly Created

DPW&T 311 Snow Team

- Located in the DPW&T Command Team to address 311 requests
- This team will be a direct liaison with the County PGC311 Team



Elevated Snow Strategy: Improved 311 Response



311 Snow Service Request Policy

Service requests will not be accepted until **24 hours** after snow has stopped.

**Disclaimer

For extreme events (ice/blizzard), the SLA for storms greater than 2 inches will vary and be greater than **48 hours**.



Elevated Snow Strategy: Communications



Social and Broadcast Media

- *Engaging daily with audiences across multiple platforms*

Community Partners

- *Keeping our Community Partners informed through direct to email updates*

County Council

- *DPW&T will provide flyers and social media kits for County Council members to share with their constituents.*

Partner Collaboration

- *Collaborating with Office of the County Executive Communications Department and partner agencies to expand reach and impact*

Communications Channels for Snow Operations

Website Updates

- *Provide real time snow-related website updates where possible*

Community Events

- *Providing snow updates and information during tabling events prior to snow season. Providing assets on demand*
- *Winter Community Partners Mtg.*
- *Virtual & In Person Snow Summit*

Newsletter

- *Provide email updates via The Dispatch alerts*

Elevated Snow Strategy: Public Communications

- For snow related service requests, call PGC311 24 hours after snowfall has stopped.
- Primary and collector roads will be plowed and treated during activation. Once the snow stops, resources will move into residential areas.
- Parking is prohibited along all designated snow emergency routes.
- Once the road has been treated and plowed, cars should be moved to the odd side of the street.
- To avoid shoveling the driveway multiple times, please shovel after the street has been plowed.

Road Condition Terms



Elevated Snow Strategy: Council Engagement

- Deliver briefing to County Council
- Provide Situational Awareness Reports (SAR) every 3-hours during storm operation.
- Provide members with assets, including, but not limited to, flyers, social media kits, road status updates.
- Provide Road Status and Transportation updates prior to snow events, during, and after storm event.

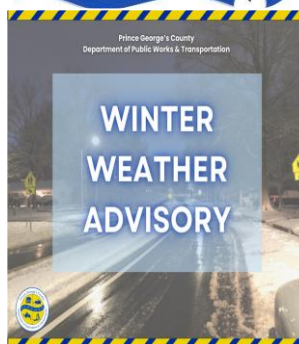
Prince George's County
Department of Public Works & Transportation

Working Together

County residents and business owners play an important role in helping snow crews provide effective snow removal.

Actions that will benefit everyone and help snow plow crews effectively treat and clear roadways includes:

- ❄ Do not drive on roadways until after they have been treated unless it is an emergency.
- ❄ Do not park on snow emergency routes (vehicles will be towed).
- ❄ Park only in driveways or on even-numbered sides of residential streets. If off-street parking is not available.
- ❄ Shovel driveways after roads have been plowed to avoid having driveways blocked by snow operations.
- ❄ Do not place snow from driveways in the traveled portions of roads.
- ❄ Shovel sidewalks abutting single family homes and businesses, as required by the County Code/Abutter's Ordinance.
- ❄ Shovel out around fire hydrants and mailboxes.
- ❄ Wait 48 hours after precipitation has stopped before calling PGC 311.



Prince George's County
Department of Public Works & Transportation

SALT BRINING IN PROGRESS

Prince George's County
Department of Public Works & Transportation

RESIDENTIAL WINTER SAFETY TIPS

- Please park in driveways or other off-road locations whenever possible to ensure accessibility for snowplows.
- Report hazardous conditions, including icy patches, to PGC311. Please report downed trees to your utility company.
- Please wait until 48 Hours **AFTER** the precipitation has stopped to report untreated areas to PGC311.
- Please remember to clear your vehicles from Snow Emergency Routes.
- Please avoid traveling during an active winter storm. County crews and trucks will be treating roadways during this time.

Prince George's County
Department of Public Works & Transportation

It's The Day Before a Winter Storm, How Should I prepare?

DPW&T provides valuable tips on maintaining safety prior to a snow event.

- PREPARE AN EMERGENCY KIT**
Assemble a kit with non-perishable food, bottled water, first aid supplies, medications, blankets, warm clothing, a battery-powered radio, and extra batteries.
- POWER UP YOUR ELECTRONICS**
Keep your smartphone, tablet and computer batteries fully charged and have alternate power sources for your devices at the ready. If possible, purchase a few portable chargers for additional power sources in the event you experience a power outage.
- PURCHASE SNOW AND ICE REMOVAL TOOLS IN ADVANCE**
Use this time to check your inventory of snow removal tools, including ice melt, shovels, ice scrapers, and any other items that could help manage snow and ice in your area. Stay prepared!
- STAY CONNECTED FOR UPDATES**
Follow County government on social media including the Department of Public Works and Transportation (DPW&T), the Office of Emergency Management (CEM), and other relevant agencies for real-time information.

COMMON AREAS FOR BLACK ICE

- Low spots or dips in the roadway.
- Near guardrails on the shoulders.
- Near or on bridges.
- Absence of spray from tires on seemingly wet roads.

TIP: If temps are below freezing, assume wet spots on the road are black ice.

Prince George's County
Department of Public Works & Transportation

WAYS TO STAY INFORMED DURING INCLEMENT WEATHER

- Visit DPW&T's Website for latest updates.
- Follow DPW&T's Social Media accounts.
- The PGC Trip Mobile App.
- The PGC Connect Mobile App.

During inclement weather, if possible, please avoid roadways. If you must travel please exercise caution.

TRANSPOT

ÁREAS COMUNES PARA EL HIELO NEGRO

- Puntos bajos o desniveles en la carretera.
- Cerca de barandillas en los arcos.
- Cerca o sobre puentes.
- Ausencia de salpicaduras de neumáticos en carreteras aparentemente mojadas.

CONSEJO: Si las temperaturas están por debajo del punto de congelación, suponga que los puntos húmedos de la carretera son hielo negro.



Aisha N. Braveboy
County Executive



Michael D. Johnson, P.E.
Director

Strategic Plan: Agency Readiness Needs



Thank you, County Executive Braveboy and Chair Burroughs!

- The Open Solicitation for Heavy Vehicles has expanded our available resources. Through two completed Snow Solicitation phases, DPW&T and ODP have strengthened our equipment capacity.
- Continued annual investments will be essential to meeting long-term equipment and staffing goals.
- Last season we operated with fewer than 100 trucks; this year we have nearly 300.
- We are ready!



Aisha N. Braveboy
County Executive

Elevated Snow Strategy: New Front Facing Efforts



Michael D. Johnson, P.E.
Director

(Elevated)
First Ever Multi-Agency
Joint Press Conference at
DPW&T Snow Dry Run on Oct. 31
with County Executive
Aisha Braveboy



PRINCE GEORGE'S COUNTY
IN-PERSON SNOW SUMMIT 2025

SAVE THE DATE

**THURSDAY
DECEMBER 18, 2025
10AM - 11:30AM**

D'Arcy Maintenance Yard
8400 D'Arcy Road
District Heights, MD 20747





PRINCE GEORGE'S COUNTY
VIRTUAL SNOW SUMMIT 2025

SAVE THE DATE

**THURSDAY
DECEMBER 11, 2025
6PM - 7:30PM**





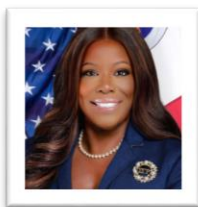


Aisha N. Braveboy
County Executive



Michael D. Johnson, P.E.
Director

Where We Are Today in the Timeline



Snow Dry Run with CEX

