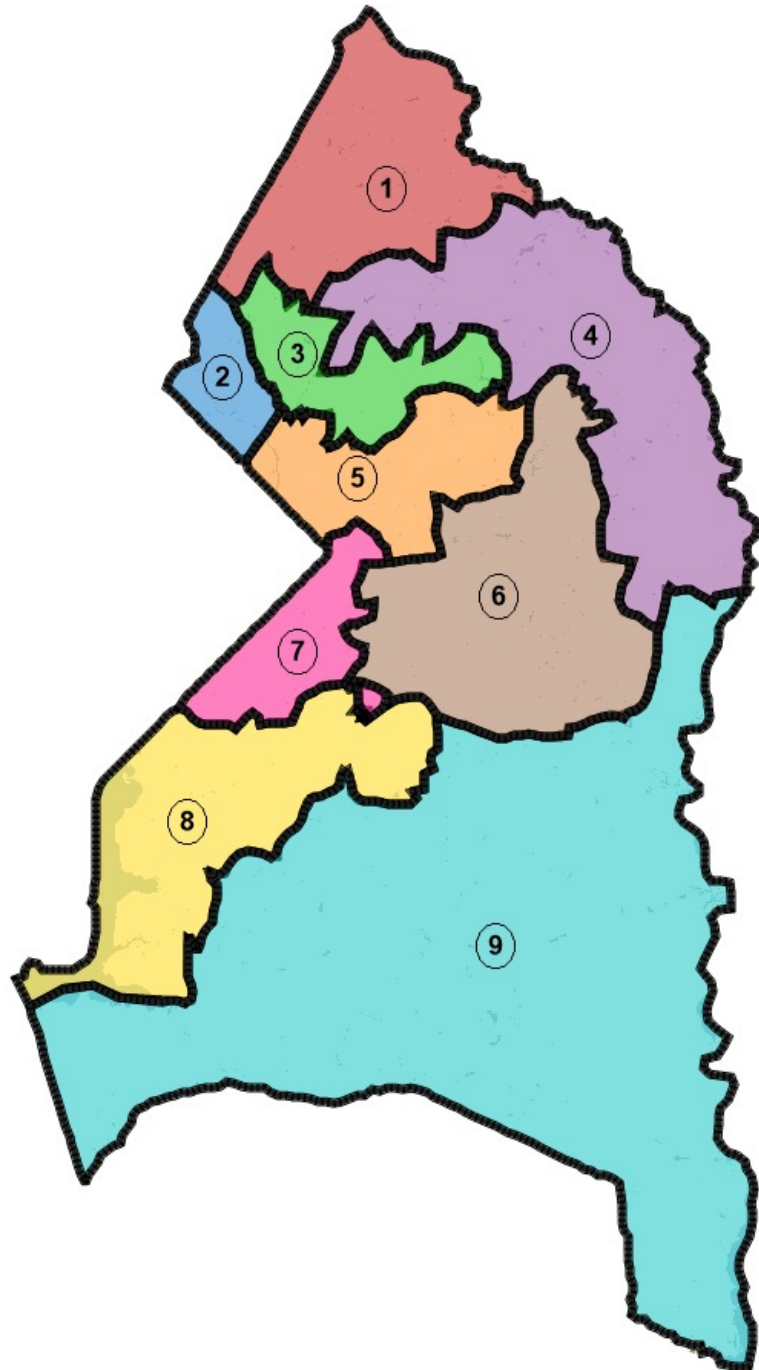


May 17, 2021

Prince George's County Redistricting Commission Public Meeting

Description of Potential Changes to Remedy Malapportionment in 2011
County Council Districts

Nate Persily



Projected County
Population:
914,212

Ideal Population
Per District
(Projected):
101,579

Projected Shifts in District Deviations

2010 Census

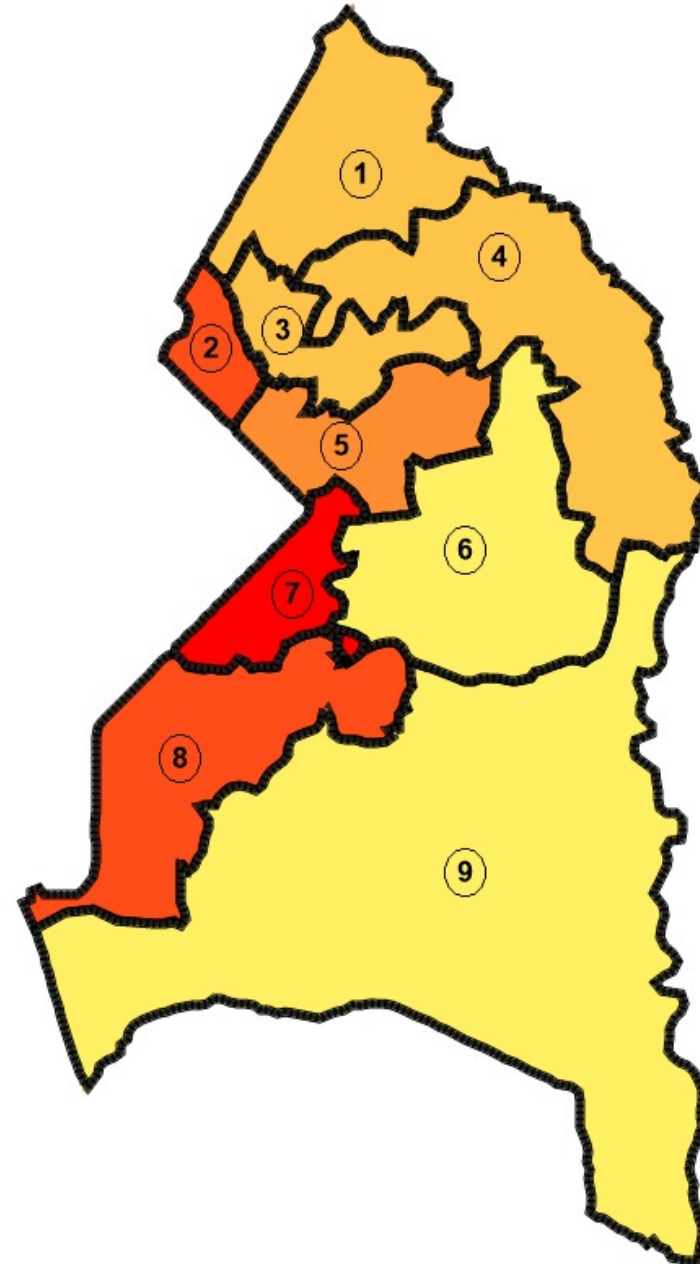
District	Population	Deviation	% Deviation
1	98324	2388	2.49%
2	92075	-3861	-4.02%
3	99085	3149	3.28%
4	98729	2793	2.91%
5	94388	-1548	-1.61%
6	97016	1080	1.13%
7	95453	-483	-0.50%
8	93558	-2378	-2.48%
9	94792	-1144	-1.19%

2020 Projection

District	Population	Deviation	% Deviation	Difference (2020-2010)
1	105309	3730	3.67%	6985
2	98131	-3448	-3.39%	6056
3	104716	3137	3.09%	5631
4	103990	2411	2.37%	5261
5	99887	-1692	-1.67%	5499
6	106085	4506	4.44%	9069
7	93274	-8305	-8.18%	-2179
8	96876	-4703	-4.63%	3318
9	105944	4365	4.30%	11152

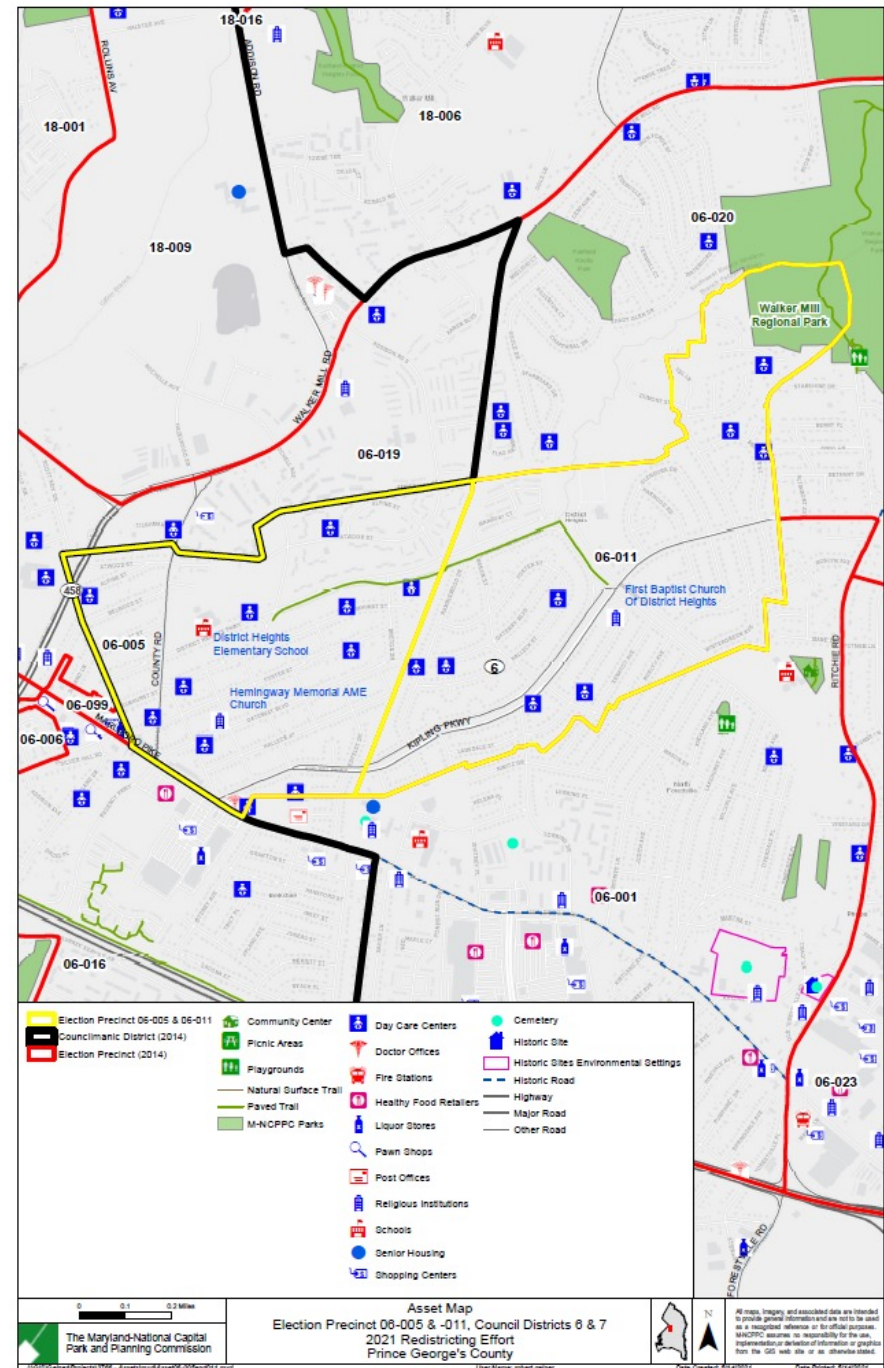
Regional Population Differences

District	Population	Deviation	% Deviation
1	105309	3730	3.67%
2	98131	-3448	-3.39%
3	104716	3137	3.09%
4	103990	2411	2.37%
5	99887	-1692	-1.67%
6	106085	4506	4.44%
7	93274	-8305	-8.18%
8	96876	-4703	-4.63%
9	105944	4365	4.30%



Proposed Remedy for District 7:
Move one or two precincts in
District Heights from District 6 to 7

- District 7 is *projected* to be underpopulated by -8,305 people (-8.18%); District 6 is overpopulated by 4,506 people (4.44%)
- If move one precinct (3,375 people), District 7 = -4.85%
District 6 = 1.11%
- If add two precincts (6,260 people), District 7 = -2.01%
District 6 = -1.73%



Existing Deviations in Districts 6 and 7

District	Projected Population	Deviation	% Deviation
6	106,085	4,506	4.44%
7	93,274	-8,305	-8.18%

If move two precincts (6260 people) from 6 to 7:

District	Projected Population	Deviation	% Deviation
6	99,534	-1,754	-1.73%
7	99,825	-2,045	-2.01%

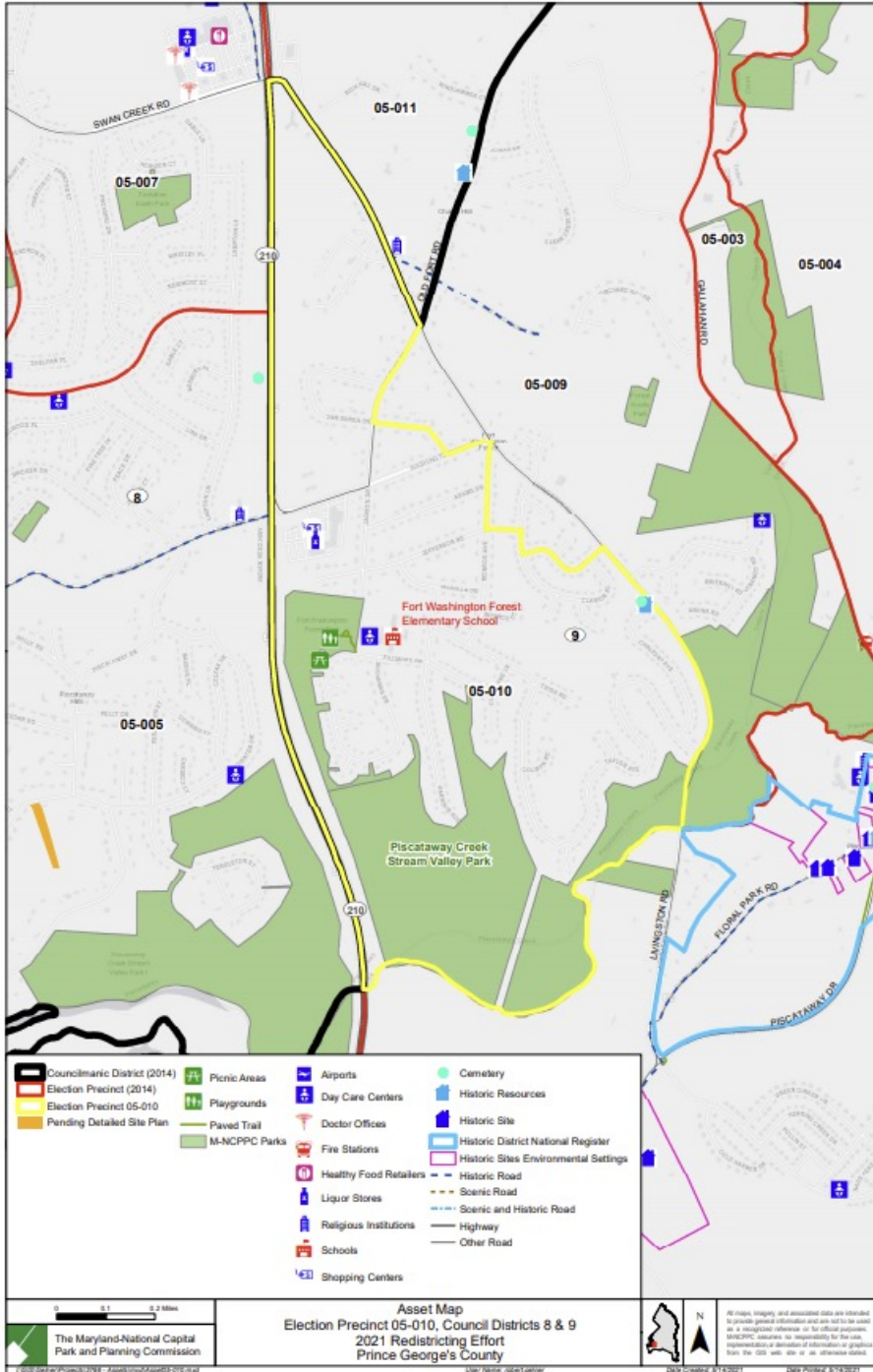
If move one precinct (3,375 people) from 6 to 7:

District	Projected Population	Deviation	% Deviation
6	102,710	1,131	1.11%
7	96,649	-4,930	-4.85%

Proposed Change for Districts 8 and 9:
Move one precinct (1,466 people) from
District 9 to District 8

District	Projected Population	Deviation	% Deviation
8	96,876	-4,703	-4.63%
9	105,944	4,365	4.30%

District	Projected Population	Deviation	% Deviation
8	98,342	-3,237	-3.19%
9	104,478	2,899	2.85%



Proposed Change for Districts 1 and 2:
Move two precincts (3,173 people) from
District 1 to District 2

Before Change

District	Projected Population	Deviation	% Deviation
1	105309	3730	3.67%
2	98131	-3448	-3.39%

After Change

District	Projected Population	Deviation	% Deviation
1	102136	557	0.55%
2	101304	-275	-0.27%

