

The following are submissions by Mr. Bradley E. Heard during the 2021 Redistricting process. Mr. Heard initially made his first submission on June 6, 2021 and final submission on August 16, 2021. The Commission carefully considered each submission by Mr. Heard, including his testimony at public hearings on July 19 and July 26, 2021. Ultimately, the Commission concluded that plans proposed by Mr. Heard, including an entirely new plan or map, were not aligned with the Commission's guiding principles of 1) a least change plan, 2) boundaries that are contiguous, 3) avoid splitting precincts, 4) districts with no greater than 4.5 percent population deviation, and 5) consideration of assets or community interests that connect each district.

The submissions that follow those of Mr. Heard, *equally* considered by the Commission, are from several other residents in the County, including residents from Collington Station in Bowie. The 2021 Plan proposed and adopted by the Commission will not move Collington Station from District 4. Under the Plan proposed by the 2021 Commission, Collington Station will remain in District 4.

**BRADLEY E. HEARD**  
415 Zelma Avenue  
Capitol Heights, MD 20743-3126  
(301) 336-0978  
[bradley.heard@gmail.com](mailto:bradley.heard@gmail.com)

June 6, 2021

**VIA EMAIL**

Rajesh A. Kumar, Esq.  
Karen T. Zvakos, Esq.  
Prince George's County Redistricting Commission  
14741 Governor Oden Bowie Dr  
Upper Marlboro, MD 20772

**Re: Proposed Illustrative County Council Redistricting Plan**

Dear Raj & Karen:

Please accept this superseding correspondence for submission into the Redistricting Commission's administrative record, in lieu of my emails of June 4-5, 2021. Please disregard the earlier emails and again accept my apologies for the multiple submissions.

On May 25, I wrote to you inquiring as to whether the County had any tools available to assist the public in creating and submitting proposed illustrative plans for the Redistricting Commission's consideration. I made this inquiry because I had become concerned, after reviewing the Commission's previous proceedings, that the Commission was gelling around a "least change" approach to addressing a projected malapportionment in District 7, where I reside, vote, and pay taxes. Specifically, the Commission seemed to be focused almost exclusively on options that would move one or two precincts in the City of District Heights from District 6 to District 7. I would respectfully ask the Commission to reconsider the wisdom or efficacy of relying on "least change" as the overriding redistricting principle. Unlike the other principles identified by the commission (i.e., contiguity, avoidance of split precincts, keeping population deviation to no greater than 4.5%, and consideration of assets that connect districts), "least change" seems to be geared toward avoiding the true work of assessing whether the districting plan makes sense in light of the other articulated principles and the Constitution.

As the Commission's redistricting consultant, Dr. Nate Persily, has repeatedly noted in his presentations, the Commission's primary constitutional obligation in the redistricting process is to ensure that the 9 council districts are **substantially equal in population**. Achieving substantial equality in population likely requires a plan that is not a "least change" plan. Although the Commission's articulated standard of keeping deviation at "no greater than 4.5%" is likely near at the edge of the Constitutional limit of presumptive validity, it is nevertheless ill-advised to tolerate such high deviations if the districts can be balanced in such a way as to achieve a lesser population deviation, while still respecting other traditional redistricting principles.

Over the weekend, after doing some internet research, I came across a free web application (“Districtr”) that allowed me to create [an illustrative redistricting plan](#), which I am herewith submitting for the Commission’s consideration. The Districtr application uses 2010 decennial population data, because the Census Bureau has unfortunately not yet released the 2020 decennial data. Nevertheless, I suspect that this illustrative plan will still be viable after the new population dataset is applied, because I have kept the population deviations to a minimum.<sup>1</sup> In addition, while my proposed plan does not prioritize the problematic “least change” principle, it does a far superior job of meeting the Commission’s other articulated redistricting criteria than a “least change” approach would. For example, this illustrative plan:

1. Creates districts that are substantially equal in population, with no district deviating more than 1.25% from the ideal population.
2. Creates compact and contiguous districts.
3. Does not split any precincts.
4. Does not split any incorporated municipalities.
5. Keeps the entire Central Avenue—Metro Blue/Silver Line Corridor (Capitol Heights, Addison Road, Morgan Boulevard, and Largo Town Center stations); the County’s Inglewood government complex; and Prince George’s Community College in one council district.<sup>2</sup>
6. Keeps the entire Metro Orange Line corridor (Cheverly, Landover, and New Carrollton stations) in one council district.<sup>3</sup>
7. Keeps the entire Metro Southern Green Line corridor (Southern Avenue, Naylor Road, Suitland, and Branch Avenue stations) in one council district.<sup>4</sup>
8. Keeps most of the Metro Northern Green/Yellow Line corridor (West Hyattsville, Prince George’s Plaza, and College Park) in one council district.<sup>5</sup>

---

<sup>1</sup> I would ask that Dr. Persily prepare an analysis of this illustrative plan for the Commission’s consideration based on the same Haystaq 2019 ACS data that he’s been using in his other presentations, as well as the actual 2020 decennial data if it becomes available in time.

<sup>2</sup> Currently, this vital corridor is split between **three** council districts (5, 6, and 7). At its most absurd point, the land within the 10-minute/half-mile walkshed of the Addison Road Metro Station is divided between two different council districts (6 and 7). These splits tear apart socioeconomically disadvantaged communities with common interests and hamper the development of a cohesive planning and redevelopment strategy for this important transportation corridor.

<sup>3</sup> Currently this corridor is split between two districts (3 and 5).

<sup>4</sup> Currently this corridor is split between two districts (7 and 8).

<sup>5</sup> Currently, this corridor is split between three districts (1, 2, and 3).

9. Keeps the University of Maryland campus complex in one council district.
10. Keeps the Beltsville Agricultural Research Complex in one council district.
11. Keeps National Harbor and the Indian Head Highway corridor in one council district.
12. Keeps the five currently serving councilmembers who are eligible for reelection to a second district-based term (i.e., Dernoga, Ivey, Anderson-Walker, Streeter, and Harrison) in separate districts, so that they will not be competing against one another.<sup>6</sup>

Along with this letter, I am including: (1) [a PDF of the map and the population deviation analysis](#); (2) [shape files](#); and (3) [the native JSON file](#), which can be re-uploaded into Districtr and other software, to ensure that no one has tampered with the originally proposed plan on this publicly accessible open-source platform.

I am happy to discuss this illustrative plan further at your or the Commission's convenience, and I thank you in advance for your assistance and consideration.

Sincerely yours,

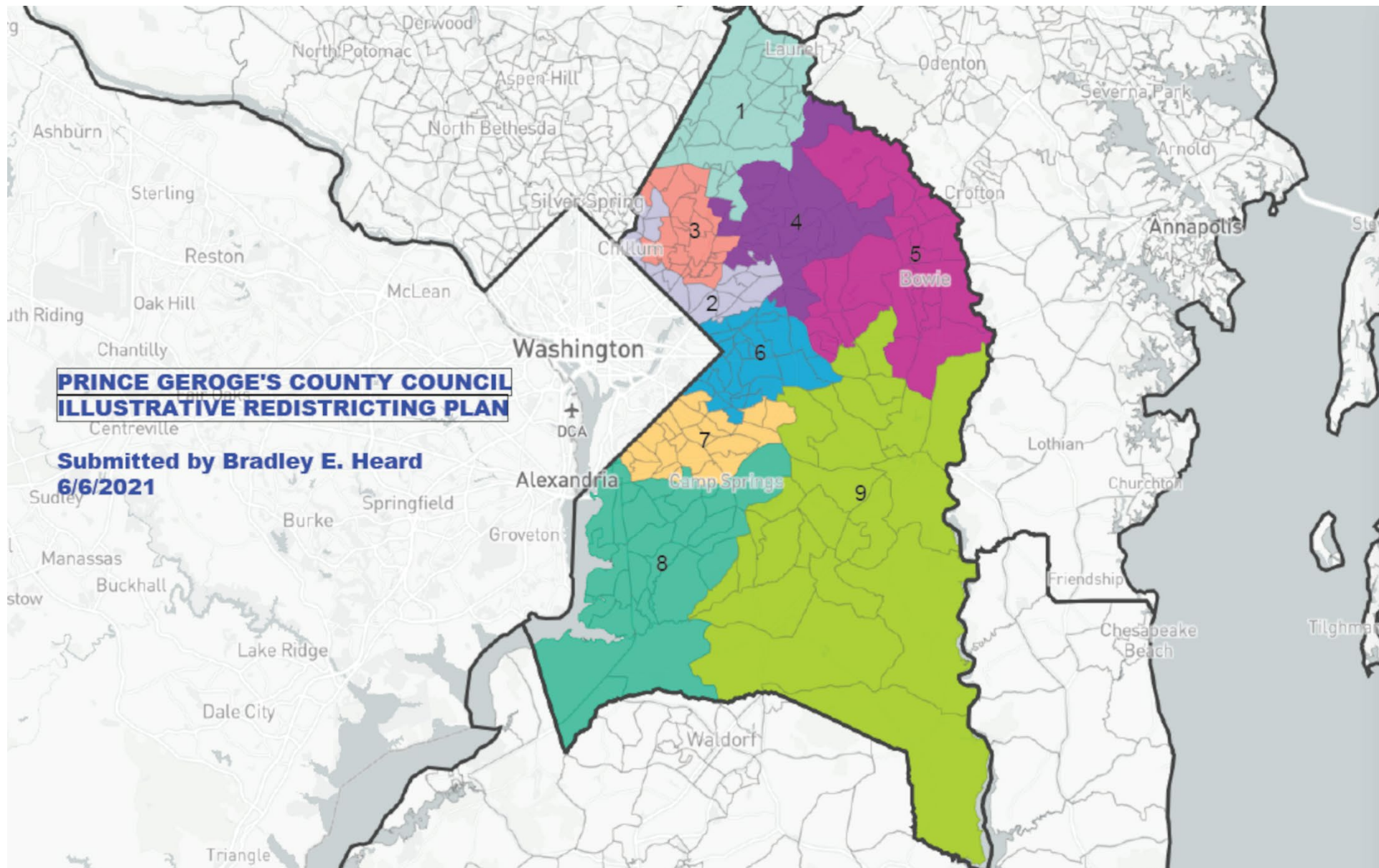
*/s/ Bradley E. Heard*

Bradley E. Heard

cc: Dr. Nate Persily

---

<sup>6</sup> The Commission wisely did not identify incumbency protection as a consideration, and I likewise do not believe it to be an appropriate criterion; however, this factor will undoubtedly be of political interest to the County Council, which ultimately must enact a redistricting plan.



**Population Deviation Analysis**  
**Prince George's County Council—Illustrative Redistricting Plan**  
**(Submitted by Bradley Heard 6/6/2021)**

Based on 2010 Decennial Census Population (in the absence of 2020 data)  
Total Population: 863,420; Ideal District Population (9 Districts): 95,936

<b>District</b>	<b>Population</b>	<b>Numeric Deviation</b>	<b>Percentage Deviation</b>
1	95,734	202	-0.21%
2	96,895	959	+1.00%
3	97,122	1,186	+1.24%
4	96,089	153	+0.16%
5	94,933	1,003	-1.05%
6	96,009	73	0%
7	95,736	200	-0.21%
8	95,534	402	-0.42%
9	95,368	568	-0.59%



**BRADLEY E. HEARD**  
415 Zelma Avenue  
Capitol Heights, MD 20743-3126  
(301) 336-0978  
[bradley.heard@gmail.com](mailto:bradley.heard@gmail.com)

June 14, 2021

**VIA EMAIL**

Rajesh A. Kumar, Esq.  
Karen T. Zvakos, Esq.  
Prince George's County Redistricting Commission  
14741 Governor Oden Bowie Dr  
Upper Marlboro, MD 20772

**Re: Revised Illustrative County Council Redistricting Plan**

Dear Raj & Karen:

This correspondence, which I submit for inclusion into the Redistricting Commission's administrative record, follows my earlier letter of June 6, 2021. I am writing to provide a [revised illustrative County Council redistricting plan](#), along with supporting documentation, for the Commission's consideration. Like the earlier plan, this revised plan (Map No. 24210) tracks to the 2010 decennial population data available on the Redistrict web application; however, this plan seeks to take into account the projected population shifts based on the Haystaq/2019 ACS information supplied by the Commission's consultant, Dr. Nate Persily.<sup>1</sup>

In my earlier letter, I urged the Commission to reconsider the wisdom or efficacy of relying on "least change" as the overriding redistricting principle. Presumably, in selecting that principle, the Commission was motivated by efficiency considerations, as well as a presumption that the 2011 Council-adopted redistricting plan (CB-64-2011) was sound and free from blemishes. Unfortunately, that is not accurate. In fact, **the 2011 plan is fundamentally flawed** in at least the following two respects:

**1. The 2011 Plan Did Not Provide for Districts That Were "Equal in Population."**

Consistent with the Equal Protection Clause of the 14th Amendment to the U.S. Constitution, Section 305 of the Prince George's County Charter requires that the redistricting plan for the County Council "shall provide for Council districts that are compact, contiguous, and **equal in population**." While mathematical exactness is not required, the Council must nevertheless "make an honest and good faith effort to construct districts...**as nearly of equal population as is practicable**." *Reynolds v. Sims*, 377 U.S. 533, 577 (1964) (emphasis added); *Raleigh Wake Citizens Ass'n v. Wake Cnty. Bd. of Elec.*, 827 F.3d 333, 340-41 (4th Cir. 2016) [hereinafter, "RWCA"]. In assessing whether

---

<sup>1</sup> I have previously requested, and again request, that Dr. Persily prepare a population deviation and VAP analysis of this revised illustrative plan using the same Haystaq estimates that he has been using in the preparation of his various plan alternatives, so that the Commission and the public can have an "apples to apples" comparison of all the relevant plans.

population deviations are “practicable,” courts look to whether and to what extent “legitimate” redistricting considerations, such as compactness, contiguity, or not splitting up political or precinct boundaries may necessitate a deviation from the ideal population number. *RWCA*, 827 F.3d at 341. Although state and local districting plans with a maximum population deviation of greater than 10% are presumptively invalid, *see, e.g., Evenwel v. Abbott*, 136 S. Ct. 1120, 1124 (2016), the converse is not true. Rather, when a plan’s maximum population deviation is below 10%, the party challenging the plan need only show that illegitimate, improper, arbitrary, or discriminatory considerations predominate in explaining the higher-than-necessary deviation. *RWCA*, 827 F.3d at 341-42; *Wright v. North Carolina*, 787 F.3d 256, 264-65 (4th Cir. 2015).

There is ample evidence that neither the 2011 Redistricting Commission nor the County Council, in recommending and enacting, respectively, the 2011 plan, made an “honest and good-faith effort” to equalize population across the nine council districts, as required by the Constitution. Instead, the Commission’s and Council’s stated goal was merely to keep maximum population deviation below the 10% threshold of presumptive constitutional invalidity.<sup>2</sup> The Council’s adopted 2011 plan has a maximum deviation of **7.30%**. The plan recommended by the 2011 Redistricting Commission had a maximum deviation of **7.38%**. By contrast, the revised illustrative plan that I previously submitted on June 6 (which was based on 2010 decennial population data) had a substantially lower maximum deviation of **2.26%**. This demonstrates that it was certainly possible for the 2011 Commission and the Council to have achieved *substantially* greater population equality in the 2011 plan, while still respecting other traditional redistricting principles.

Given that the 2011 redistricting plan was fundamentally flawed to begin with, it would be unwise for this 2021 Commission simply to apply a “least change” redistricting principle to it, since such an approach places an unjustified imprimatur of legitimacy on an already-dubious plan. Instead, **the Commission should approach the 2021 redistricting process from a clean slate**, using traditional redistricting principles.

## **2. The 2011 Plan Unjustifiably Fractionalizes the Greater Capitol Heights and Central Avenue–Metro Blue Line Communities of Interest**

The Supreme Court has recognized that “maintaining communities of interest” is a legitimate redistricting consideration. *See Evenwel*, 136 S. Ct. at 1124. However, because defining such communities can sometimes be an intensely localized and potentially politically fraught inquiry, courts are often more comfortable relying on communities of interest that are “widely recognized” and “geographically defined.” *Favors v. Cuomo*, No. 11-CV-5632, 2012 WL 928223, at \*5 (E.D.N.Y. Mar. 19, 2012).

Municipal boundaries, census-designated places, transit station [walkshed areas](#), and publicly defined transportation and economic development corridors are all clear examples of widely recognized and geographically defined communities of interest present throughout

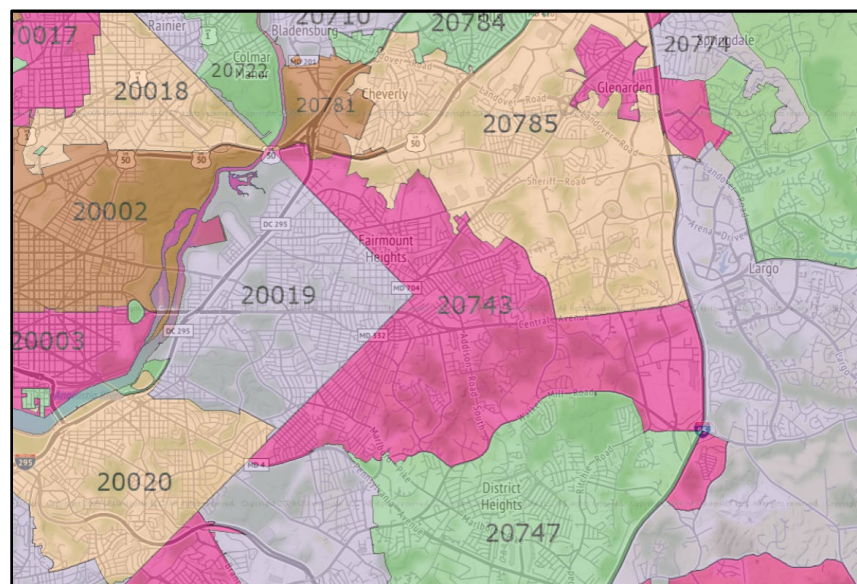
---

<sup>2</sup> This 2021 Redistricting Commission has articulated a similarly problematic “under the wire” goal by stating that the population deviation in each district should not exceed  $\pm 4.5\%$  (which means the allowable maximum population deviation would be 9%).



Prince George's County. Unfortunately, the County Council's adopted 2011 plan breaks up the Capitol Heights and Central Avenue–Metro Blue Line Corridor communities of interest where I live, vote, and pay taxes.

**“Capitol Heights”** is widely recognized to refer both to a small incorporated municipality next to the District of Columbia boundary and to a much larger unincorporated portion of Central Prince George's County stretching from the DC line to the Capital Beltway. The larger area encompasses the entire 20743 ZIP code (which hugs Eastern and Southern avenues between US-50 and Pennsylvania Avenue and extends to the Capital Beltway)<sup>3</sup> and includes the incorporated municipalities of Fairmount Heights and Seat Pleasant; the census-designated places of Cedar Heights, Maryland Park, Peppermill Village, Walker Mill, and Coral Heights; the Chapel Oaks/Deanwood Park neighborhood surrounding Addison Road between Eastern Avenue and Sheriff Road; and the Hampton Mall/Hampton Park and Steeplechase areas between the Capital Beltway and Ritchie Road:

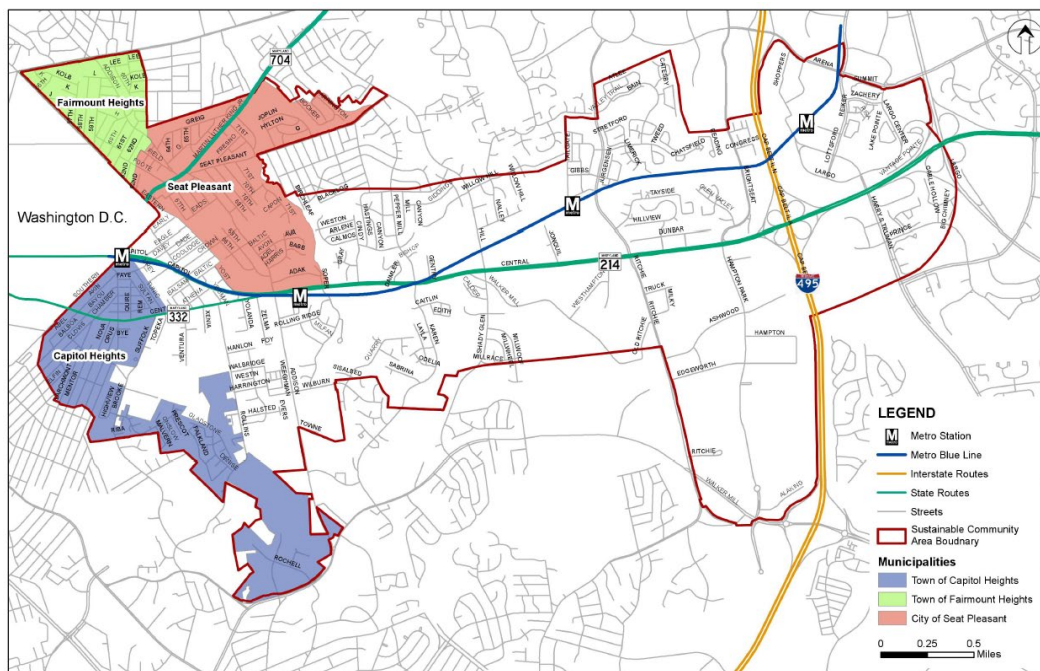


Source: [Zipmap.Net](https://www.zipmap.net)

The county- and state- designated major transportation corridor and economic development and planning focus area known as the **“Central Avenue–Metro Blue Line Corridor”** is approximately four miles long and includes property within a half-mile of Central Avenue (MD-214) and the four Metro Blue/Silver Line Stations (Capitol Heights, Addison Road, Morgan Boulevard, and Largo Town Center):

---

<sup>3</sup> Many would also include the Summerfield CDP as within greater Capitol Heights, even though the postal addresses for that 20785 ZIP code refer to “Hyattsville” or “Landover.” This is likely because this CDP is a part of the Central Avenue–Metro Blue Line Corridor, as discussed below.



Central Avenue–Metro Blue Line Corridor. Source: [M–NCPPC](#)

Under the Council’s adopted 2011 plan, greater Capitol Heights and the Central Avenue–Metro Blue Line Corridor are divided among **three** council districts (5, 6, and 7). The Capitol Heights Metro Station and half-mile walkshed area are in District 7; the Addison Road Metro Station and walkshed area are split between **two** districts (6 and 7) because the 2011 plan inexplicably splits up the Walker Mill CDP; the Morgan Boulevard Metro Station and walkshed area are in District 5; and the Largo Town Center Metro Station and walkshed area are in District 6. If the Council had followed legitimate traditional redistricting principles in the formulation of the 2011 plan, all of these significant communities of interest would be included within **one** council district.

The Council’s decision to divide these communities of interest has had disastrous results over at least the past two decades. It has thwarted revitalization and economic development efforts and left an already socioeconomically disadvantaged community in increasingly dire straits. Because the assigned councilmember for a particular district is usually integral in ensuring that coordinated land use planning and economic development activities move forward, Capitol Heights and the Central Avenue–Metro Blue Line Corridor have been left to languish because, by being effectively divided among three different council districts, no single councilmember feels that the areas are his or her personal responsibility—and conversely, the citizens in these communities have no single councilmember to hold personally and politically accountable for legislative deficiencies.

The disunion of these communities of interest also cannot be explained by legitimate redistricting factors. The Central Avenue–Metro Blue Line Corridor, and all of the municipalities and CDPs included therein, are well defined and geographically compact enough to be included in one district. The same holds true for the 20743 ZIP code area encompassing greater Capitol Heights. Also in that regard, greater Capitol Heights is separate and geographically distinct from greater Suitland/Hillcrest Heights. The two

communities are on different Metro lines, have different school attendance zones and neighborhood associations, and have distinct identities and needs. Thus, there is no need, from a redistricting standpoint, for them to be in the same council district with each other.<sup>4</sup>

**The Revised Illustrative Plan Adheres to Traditional  
Redistricting Principles and Preserves the Integrity of  
Capitol Heights and the Central Avenue–Metro Blue Line Corridor**

As noted above, my revised illustrative plan (Map No. 24210) uses the available 2010 decennial population data, but seeks to take into account the population shifts that have occurred over the past decade, as estimated in the Haystaq/2019 ACS data that Dr. Persily has presented to the Commission. The maximum population deviation in this plan is below 10% with the 2010 population data; however, it is expected that when the Haystaq-estimated population data set (and/or the actual 2020 decennial population data) is applied to these districts, the maximum deviation will be substantially lower than the current 7.36%. Additionally, the proposed council districts in this plan are compact and contiguous; compare favorably, from a racial demographic perspective, with the current districts; raise no Section 2 concerns; and do not dilute the voting strength of any racial minority group.

The revised illustrative plan adheres to the following additional **traditional and nonpartisan redistricting principles**:<sup>5</sup>

1. The plan **does not split precincts**.<sup>6</sup>
2. The plan **endeavors not to split municipal boundaries**, unless it is impracticable to include the entire municipality in one district while minimizing population deviation. (The split of the City of Hyattsville between proposed districts 2 and 3 is an example of this exception.)
3. The plan **consolidates greater Capitol Heights and the Central Avenue–Metro Blue Line Corridor into one district**, for the reasons discussed earlier in this letter.

---

<sup>4</sup> Although Capitol Heights and Suitland may have similar socioeconomic challenges and racial homogeneity, as compared to the rest of county, there is no legitimate redistricting principle that prioritizes the concentration of the Blackest and poorest communities in the County into one district, particularly when doing so severs vital economic development and transportation corridors in both communities. Indeed, this type of socioeconomic gerrymandering would be a highly illegitimate, improper, arbitrary, and likely discriminatory redistricting criterion.

<sup>5</sup> Although partisan considerations like incumbency protection were not a factor in this plan, I note here, as I did with respect to my prior illustrative plan, that this plan does not result in the pitting of any incumbent councilmember currently eligible for reelection to a second term (i.e., councilmembers Dernoga, Ivey, Streeter, Anderson-Walker, and Harrison) against any other incumbent councilmember.

<sup>6</sup> Partially, this is a function of the Redistrict web application I used to prepare the map, as the application does not allow users to split precincts. In some limited instances, such as where small portions of a municipal boundary are included within a separate precinct boundary that could not be added to a district (because it would overpopulate the district), it may make sense to split that precinct to include only the census blocks or block groups that comprise the municipal territory.

4. The plan **endeavors not to split Census-Designated Places**, unless it is impracticable to include the entire CDP in one district while minimizing population deviation. (The split of the Lake Arbor CDP between proposed districts 5 and 6 and the split of the Clinton CDP between proposed districts 8 and 9 are examples of this exception.)
5. The plan **does not split Metro and MARC station half-mile walkshed areas**. Additionally, the plan does not split 9 of the 11 Purple Line station walkshed areas. (Adelphi Road–UMCG–UMD and Riverdale Park–Kenilworth stations each sit at the edge of two districts.)

I recognize, of course, that this proposed illustrative plan is but one example of how to create a constitutionally sound redistricting plan; that other members of the public may have additional suggestions for how to achieve population equality and preserve the integrity of communities of interest; and that any plan ultimately recommended by this Commission to the County Council will necessarily only be an illustrative plan recommendation, because the 2020 P.L. 94-171 data will likely not be available prior to the Commission's September 1 deadline. Nevertheless, to the extent the Commission does not recommend my illustrative plan in full, **I respectfully urge the Commission to adopt the above redistricting principles** as it proceeds to craft its ultimate recommendation.

Along with this letter, I am including: (1) [a PDF of the proposed districting map](#), a population deviation and racial voting age population analysis, and a communities of interest and assets analysis; (2) [shape files](#); and (3) [the native JSON file](#), which can be re-uploaded into Districtr and other software, to ensure that no one has tampered with the originally proposed plan on this publicly accessible open-source platform.

I very much appreciate the Commission's consideration of these materials. Please do not hesitate to contact me if you need any additional information or clarification in regard to this revised illustrative plan.

Sincerely yours,

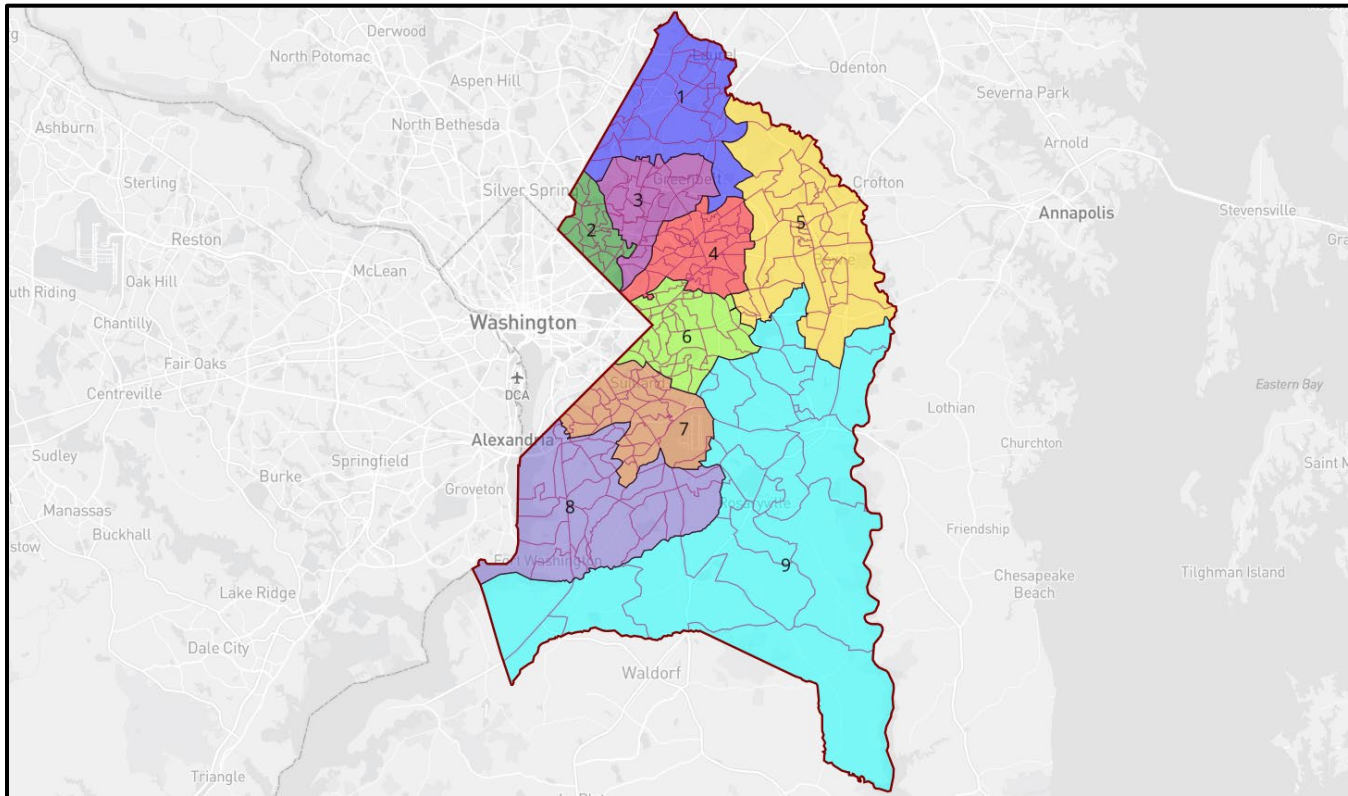
*/s/ Bradley E. Heard*

Bradley E. Heard

cc: Dr. Nate Persily



**PRINCE GEORGE'S COUNTY COUNCIL**  
**SENSIBLE COMMUNITIES ILLUSTRATIVE REDISTRICTING PLAN**  
**(Submitted by Bradley E. Heard—DRA2020 Map 2021-08-15)**



**Population Deviation and Racial Voting Age Population Analysis**  
**Prince George's County Council—Sensible Communities Illustrative Redistricting Plan**  
**(Submitted by Bradley E. Heard—DRA2020 Map 2021-07-25)**

**Based on P.L. 94-171 Total Population Data for 2020**

Total Population: 967,201; Ideal District Population (9 Districts): 107,467

Prince George's County Council 2022															
<div> <div> </div> <div> Map Statistics Analyze Compare Advanced </div> </div>															
Population			Shapes		Partisan Lean			Demographics (VAP)							
ID	Total	+/-			Dem	Rep	Oth	Total	White	Minority	Hispanic	Black	Asian	Native	Pacific
Un	0				0.00%	0.00%	0.00%	0	0.00%	0.00%	0.00%	0.00%	0.00%	0.00%	0.00%
1	106,815	-0.61%	✓	✓	79.40%	18.39%	2.21%	82,992	19.97%	80.03%	22.84%	47.91%	9.59%	2.34%	0.20%
2	106,713	-0.70%	✓	✓	88.53%	9.36%	2.11%	80,902	9.97%	90.03%	49.59%	37.06%	4.30%	5.34%	0.22%
3	108,179	0.66%	✓	✓	82.09%	15.14%	2.77%	86,837	29.88%	70.12%	25.04%	32.18%	13.02%	2.50%	0.16%
4	107,247	-0.20%	✓	✓	89.13%	9.24%	1.63%	79,916	7.84%	92.16%	25.51%	63.46%	3.90%	2.35%	0.14%
5	107,044	-0.39%	✓	✓	77.71%	20.33%	1.96%	84,651	22.00%	78.00%	6.79%	65.82%	5.59%	1.69%	0.14%
6	107,743	0.26%	✓	✓	94.08%	4.54%	1.38%	84,311	2.29%	97.71%	9.81%	87.21%	1.39%	1.62%	0.13%
7	107,553	0.08%	✓	✓	92.98%	5.62%	1.40%	84,348	4.73%	95.27%	10.14%	83.65%	1.80%	1.79%	0.17%
8	108,262	0.74%	✓	✓	89.15%	9.42%	1.44%	87,093	7.35%	92.65%	12.46%	74.72%	5.91%	1.84%	0.21%
9	107,645	0.17%	✓	✓	86.39%	12.10%	1.52%	84,999	11.17%	88.83%	5.64%	80.79%	2.62%	2.04%	0.16%
	<b>107,467</b>	<b>1.44%</b>	✓	✓	<b>86.61%</b>	<b>11.61%</b>	<b>1.78%</b>	<b>84,005</b>	<b>12.87%</b>	<b>87.13%</b>	<b>18.44%</b>	<b>63.75%</b>	<b>5.38%</b>	<b>2.38%</b>	<b>0.17%</b>
<b>Notes</b> <ul style="list-style-type: none"> <li>The 1.44% population deviation is within the 10% threshold tolerated by the courts.</li> <li>No districts lean Republican, nine lean Democratic, and none fall in the 45–55% competitive range.</li> <li>There are nine majority-minority districts.</li> </ul>															

Maximum Numeric Deviation: 1,549  
Maximum Percentage Deviation: 1.44%



**BRADLEY E. HEARD**  
415 Zelma Avenue  
Capitol Heights, MD 20743-3126  
(301) 336-0978  
[bradley.heard@gmail.com](mailto:bradley.heard@gmail.com)

July 18, 2021

**VIA EMAIL**

Rajesh A. Kumar, Esq.  
Karen T. Zvakos, Esq.  
Prince George's County Redistricting Commission  
14741 Governor Oden Bowie Dr  
Upper Marlboro, MD 20772

**Re: Revised Illustrative County Council Redistricting Plan**

Dear Raj & Karen:

This correspondence, which I submit for inclusion into the Redistricting Commission's administrative record, follows my earlier letters of June 6 and 14.

**First**, I wanted to provide my latest [revised illustrative County Council redistricting plan](#), along with supporting documentation, for the Commission's consideration. This revised plan (Map No. 26723) is a further refinement that tracks to the 2010 decennial population data currently available on the Districtr web application, while seeking to take into account the projected population shifts based on the Haystaq/2019 ACS information supplied by the Commission's consultant, Dr. Nate Persily. As compared with the June 24 plan (Map No. 24210), this revised plan keeps the City of Hyattsville in one district, reconfigures proposed districts 1-4 accordingly, and reduces population deviation (again, based on the 2010 data).

Along with this letter, I am including: (1) [a PDF of the proposed districting map](#), a population deviation and racial voting age population analysis, and a communities of interest and assets analysis; (2) [shape files](#); and (3) [the native JSON file](#), which can be re-uploaded into Districtr and other software, to ensure that no one has tampered with the originally proposed plan on this publicly accessible open-source platform.

**Second**, in light of the Census Bureau's announcement that it will not release the PL 94-171 redistricting data until late September, I urge the County to seek an appropriate court order from the Circuit Court of Prince George's County (or the U.S. District Court) to extend the Redistricting Commission's deadline to submit a proposed plan to the County Council until **November 15, 2021**, and to extend the Council's deadline for action on the Commission's plan until **January 15, 2022**. This revised timeline would allow the Commission sufficient time after receiving the PL 94-171 data and the Maryland incarcerated population adjustments to create a lawful redistricting plan. Without such court relief, it will be impossible for the Commission to lawfully perform its duties by the charter-imposed deadline of September 1, 2021.

Prince George's County Redistricting Commission (Cont'd)

July 18, 2021

Page 2 of 2

I very much appreciate the Commission's consideration of these materials. Please do not hesitate to contact me if you need any additional information or clarification in regard to this revised illustrative plan.

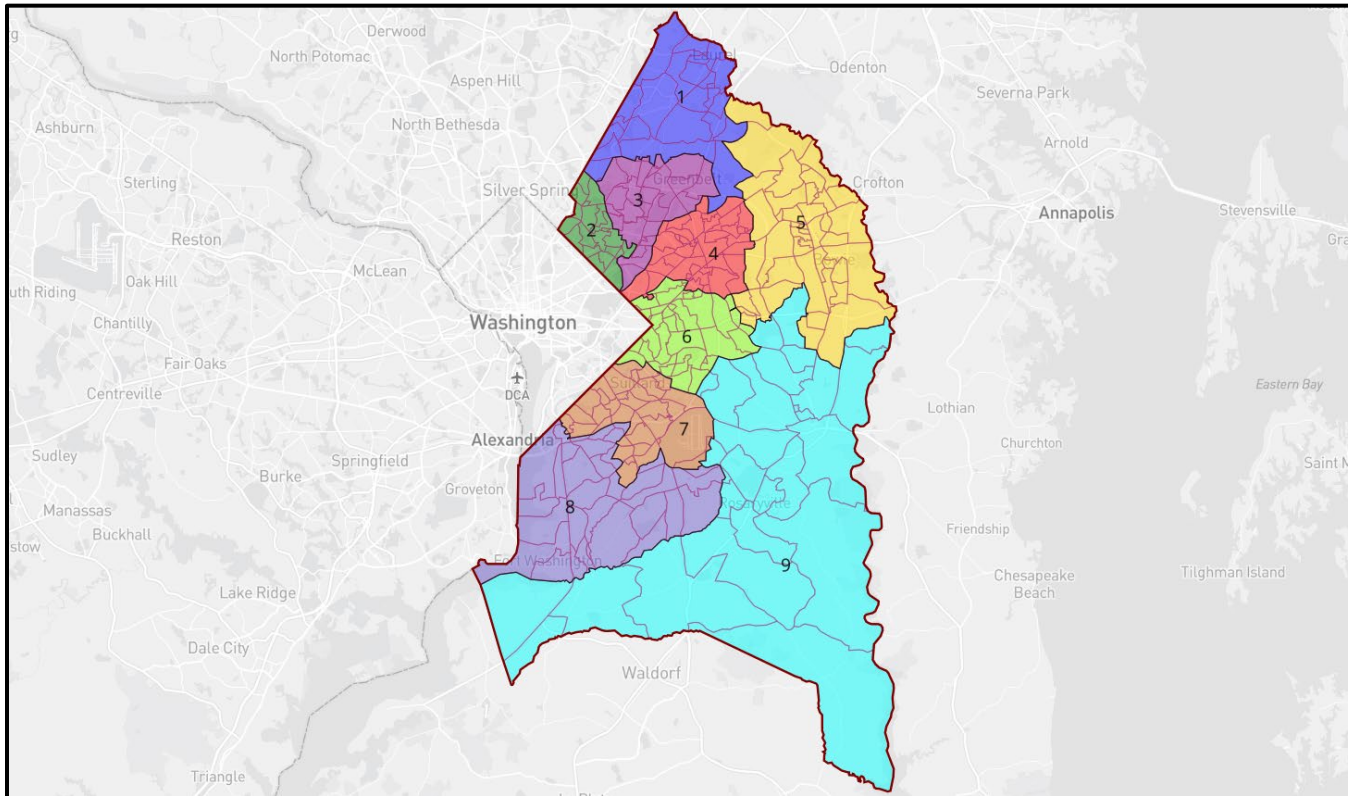
Sincerely yours,

*/s/ Bradley E. Heard*

Bradley E. Heard

cc: Dr. Nate Persily

**PRINCE GEORGE'S COUNTY COUNCIL**  
**SENSIBLE COMMUNITIES ILLUSTRATIVE REDISTRICTING PLAN**  
**(Submitted by Bradley E. Heard—DRA2020 Map 2021-08-15)**



**Population Deviation and Racial Voting Age Population Analysis**  
**Prince George's County Council—Sensible Communities Illustrative Redistricting Plan**  
**(Submitted by Bradley E. Heard—DRA2020 Map 2021-07-25)**

**Based on P.L. 94-171 Total Population Data for 2020**

Total Population: 967,201; Ideal District Population (9 Districts): 107,467

Prince George's County Council 2022															
<div> <div> </div> <div> Map Statistics Analyze Compare Advanced </div> </div>															
Population			Shapes		Partisan Lean			Demographics (VAP)							
ID	Total	+/-			Dem	Rep	Oth	Total	White	Minority	Hispanic	Black	Asian	Native	Pacific
Un	0				0.00%	0.00%	0.00%	0	0.00%	0.00%	0.00%	0.00%	0.00%	0.00%	0.00%
1	106,815	-0.61%	✓	✓	79.40%	18.39%	2.21%	82,992	19.97%	80.03%	22.84%	47.91%	9.59%	2.34%	0.20%
2	106,713	-0.70%	✓	✓	88.53%	9.36%	2.11%	80,902	9.97%	90.03%	49.59%	37.06%	4.30%	5.34%	0.22%
3	108,179	0.66%	✓	✓	82.09%	15.14%	2.77%	86,837	29.88%	70.12%	25.04%	32.18%	13.02%	2.50%	0.16%
4	107,247	-0.20%	✓	✓	89.13%	9.24%	1.63%	79,916	7.84%	92.16%	25.51%	63.46%	3.90%	2.35%	0.14%
5	107,044	-0.39%	✓	✓	77.71%	20.33%	1.96%	84,651	22.00%	78.00%	6.79%	65.82%	5.59%	1.69%	0.14%
6	107,743	0.26%	✓	✓	94.08%	4.54%	1.38%	84,311	2.29%	97.71%	9.81%	87.21%	1.39%	1.62%	0.13%
7	107,553	0.08%	✓	✓	92.98%	5.62%	1.40%	84,348	4.73%	95.27%	10.14%	83.65%	1.80%	1.79%	0.17%
8	108,262	0.74%	✓	✓	89.15%	9.42%	1.44%	87,093	7.35%	92.65%	12.46%	74.72%	5.91%	1.84%	0.21%
9	107,645	0.17%	✓	✓	86.39%	12.10%	1.52%	84,999	11.17%	88.83%	5.64%	80.79%	2.62%	2.04%	0.16%
	<b>107,467</b>	<b>1.44%</b>	✓	✓	<b>86.61%</b>	<b>11.61%</b>	<b>1.78%</b>	<b>84,005</b>	<b>12.87%</b>	<b>87.13%</b>	<b>18.44%</b>	<b>63.75%</b>	<b>5.38%</b>	<b>2.38%</b>	<b>0.17%</b>
<b>Notes</b> <ul style="list-style-type: none"> <li>The 1.44% population deviation is within the 10% threshold tolerated by the courts.</li> <li>No districts lean Republican, nine lean Democratic, and none fall in the 45–55% competitive range.</li> <li>There are nine majority-minority districts.</li> </ul>															

Maximum Numeric Deviation: 1,549  
Maximum Percentage Deviation: 1.44%

**BRADLEY E. HEARD**  
415 Zelma Avenue  
Capitol Heights, MD 20743-3126  
(301) 336-0978  
[bradley.heard@gmail.com](mailto:bradley.heard@gmail.com)

July 25, 2021

**VIA EMAIL**

Rajesh A. Kumar, Esq.  
Karen T. Zavakos, Esq.  
Prince George's County Redistricting Commission  
14741 Governor Oden Bowie Dr  
Upper Marlboro, MD 20772

**Re: Proposed Redistricting Criteria and Revised Illustrative County Council Redistricting Plan**

Dear Raj & Karen:

This correspondence, which I submit for inclusion into the Redistricting Commission's administrative record, follows my earlier letters of June 6 and 14 and July 18. From the outset, my comments have tried to stress the importance of keeping **population equality** at the center of the Commission's focus, as required by the Constitution and the County Charter, and not relying on an "anything goes as long as the maximum population deviation is under 10%" strategy.<sup>1</sup> Any population deviation should be necessitated by legitimate redistricting criteria, and should not be in service of arbitrary, discriminatory, improper, or otherwise illegal factors. I have also cautioned against using a "least change" redistricting criterion this cycle because the 2011 plan was flawed: it did not reflect a good-faith effort to achieve population equality; needlessly split precincts and Metro station areas; and failed to take into account key transportation assets and economic development priorities that counsel in favor of keeping certain communities of interest intact.<sup>2</sup>

In keeping with these observations, I have prepared a revised set of **Proposed Redistricting Criteria**, which I have attached to this letter. **I urge the Commission to formally adopt these revised criteria**, which would amend and supersede the criteria

---

<sup>1</sup> Currently, the Commission's redistricting criteria provide that population deviation in any one district should be kept below 4.5%. That equates to a maximum possible population deviation of 9%. As discussed in my June 14 letter, this criterion ensures only that the plan will not reach the *presumptive* invalidity threshold of 10%; however, it does not faithfully adhere to the population equality principle.

<sup>2</sup> I have also suggested—and still maintain—that because the Census Bureau's delay in releasing the P.L. 94-171 redistricting data will make it impossible for the Commission to draw a legal plan based on 2020 population data prior to its September 1 Charter-imposed deadline, the County should immediately seek declaratory and injunctive relief from the Circuit Court of Prince George's County to extend the Commission's deadline for submitting a plan to the County Council until **November 15, 2021**, and to extend the Council's deadline for reviewing, considering, and approving or altering the Commission's plan until **January 15, 2022**. As contemplated by the County Charter, it is **the Commission's** duty, in the first instance, to draw an independent, legal redistricting plan that may be adopted by operation of law, and to publish a report to the Council explaining such plan. The Council, in turn, is then required to hold a public hearing on **the Commission's** adopted redistricting plan. Only then is the Council legally permitted to exercise its legislative discretion whether to enact the Commission's plan or to alter it.

the Commission adopted on May 3, and which would guide the Commission's development of a plan going forward.<sup>3</sup>

Additionally, I am pleased to report that I have discovered **another free web-based redistricting application: Dave's Redistricting or DRA2020**. This website has a bit more functionality than the Districtr application I was using previously, and it also includes **2019 ACS 5-year population estimates**. Using DRA2020, I was able to prepare a [revised illustrative County Council redistricting plan](#) that tracks to a population dataset similar to the the Haystaq data used by the Commission's consultant, Dr. Nate Persily.

This revised illustrative plan modifies the one I submitted on July 18, in light of the updated population data. The plan **strictly adheres to the proposed redistricting criteria** that I discuss above. It also **responds to the additional public comments** from Tamara Davis Brown (former House of Delegates and County Council candidate) and Upper Marlboro Town Administrator Kyle Snyder—as referenced in Dr. Persily's July 26 slide deck—by keeping the Clinton CDP unified in one district and allowing all of the future annexed territory of Upper Marlboro to be included in one district. Finally, in keeping with the population equality principle, this illustrative plan achieves a **maximum population deviation of 1.89%**.

Along with this letter, I am including: (1) [a PDF of the proposed districting map](#), a population deviation and racial citizen voting age population analysis, and a communities of interest and assets analysis; and (2) [a zip file with shape files, native JSON and GEOJSON files, and CSV files of block and precinct assignment data](#), which should facilitate the importing of this plan into other redistricting software.

As always, I appreciate the Commission's consideration of these materials. Please do not hesitate to contact me if you need any additional information or clarification in regard to this revised illustrative plan.

Sincerely yours,

*/s/ Bradley E. Heard*

Bradley E. Heard

/bh  
Enclosures

cc: Dr. Nate Persily

---

<sup>3</sup> To the extent the Commission insists on proceeding with a "least change" strategy, I prefer the "Second Alternate Remedy for District 7" referenced in Dr. Persily's July 26 slide deck, which incorporates my previous suggestion of unifying the Walker Mill CDP and adding Precincts 18-006 and 06-020 to District 7. This alternative achieves population equality in District 7 and also keeps the Addison Road Metro Station area half-mile radius in one district (District 7). I note, however, that this would require adding more population to District 6, likely from the overpopulated District 9, to avoid malapportionment in District 6—thus revealing the inherent conundrum presented by a using a piecemeal "least change" strategy on a map that was not equally apportioned to begin with.



# PROPOSED REDISTRICTING CRITERIA

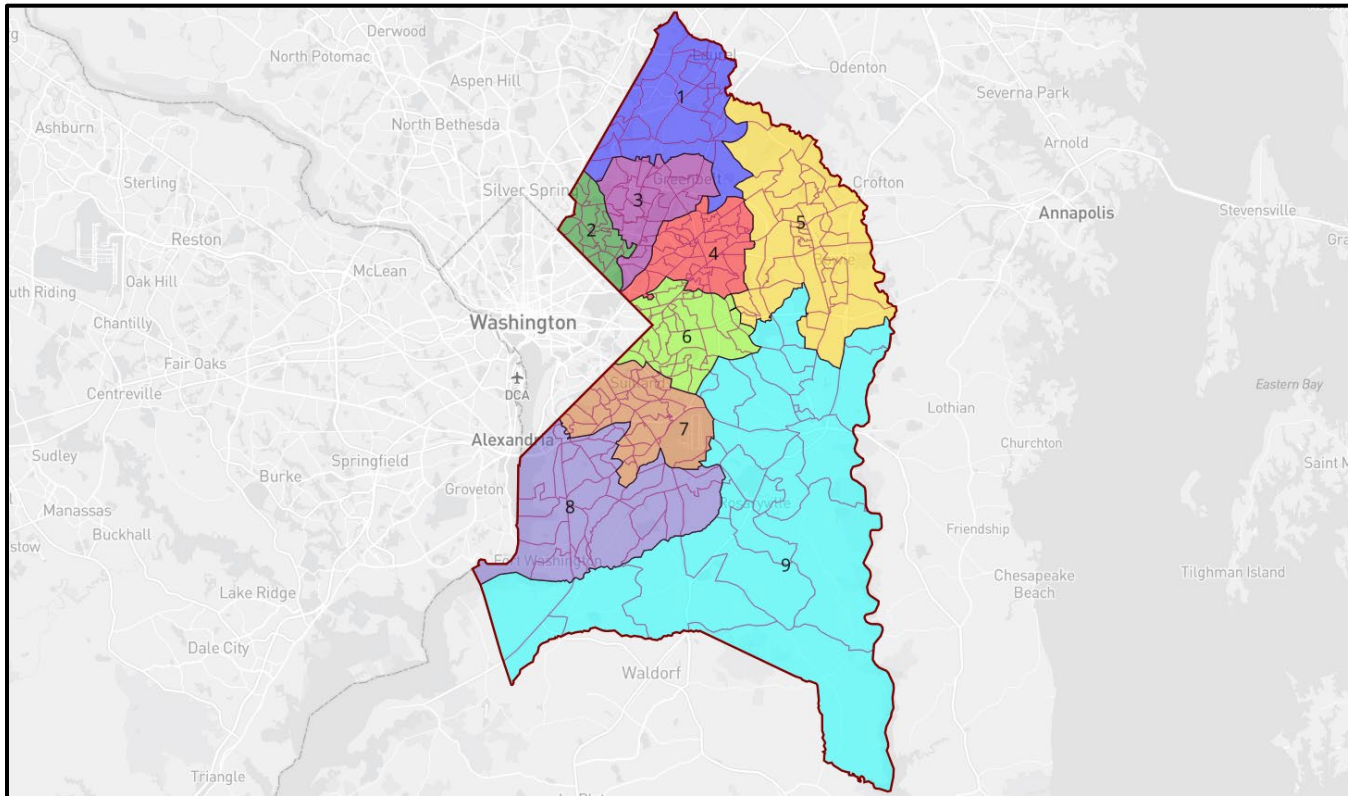
## PRINCE GEORGE'S COUNTY

### REDISTRICTING COMMISSION (2021)

*(Submitted by Bradley E. Heard — July 25, 2021)*

1. Districts should be “**as nearly of equal population as is practicable.**” *Reynolds v. Sims*, 377 U.S. 533, 577 (1964); *Raleigh Wake Citizens Ass’n v. Wake Cnty. Bd. of Elec.*, 827 F.3d 333, 340-41 (4th Cir. 2016); P.G. Co. Charter § 305. The **maximum population deviation** (i.e., the sum of the percentage deviations from population equality of the most- and least-populated districts) **should not exceed 3.5%.**
2. Districts should be **compact and contiguous.** P.G. Co. Charter § 305.
3. The plan should **not result in the denial or abridgement of the rights of any racial or language minority group** to participate in the political process. 52 U.S.C. § 10301.
4. The plan should **not split precincts.**
5. The plan should **not split municipal boundaries.**
6. The plan should **not place two or more incumbents eligible for reelection as a district member in the same council district.**
7. The plan should **not split the half-mile radius surrounding each WMATA Metrorail station** and should **minimize splits along each Metrorail line segment** (Blue/Silver, Orange, Southern Green, and Northern Green).
8. The plan should **minimize splits of Census-Designated Places.**

**PRINCE GEORGE'S COUNTY COUNCIL**  
**SENSIBLE COMMUNITIES ILLUSTRATIVE REDISTRICTING PLAN**  
**(Submitted by Bradley E. Heard—DRA2020 Map 2021-08-15)**



**Population Deviation and Racial Voting Age Population Analysis**  
**Prince George's County Council—Sensible Communities Illustrative Redistricting Plan**  
**(Submitted by Bradley E. Heard—DRA2020 Map 2021-07-25)**

**Based on P.L. 94-171 Total Population Data for 2020**

Total Population: 967,201; Ideal District Population (9 Districts): 107,467

Prince George's County Council 2022															
<div> <div> </div> <div> <div>Map</div> <div>Statistics</div> <div>Analyze</div> <div>Compare</div> <div>Advanced</div> </div> </div>															
Population			Shapes		Partisan Lean			Demographics (VAP)							
ID	Total	+/-			Dem	Rep	Oth	Total	White	Minority	Hispanic	Black	Asian	Native	Pacific
Un	0				0.00%	0.00%	0.00%	0	0.00%	0.00%	0.00%	0.00%	0.00%	0.00%	0.00%
1	106,815	-0.61%	✓	✓	79.40%	18.39%	2.21%	82,992	19.97%	80.03%	22.84%	47.91%	9.59%	2.34%	0.20%
2	106,713	-0.70%	✓	✓	88.53%	9.36%	2.11%	80,902	9.97%	90.03%	49.59%	37.06%	4.30%	5.34%	0.22%
3	108,179	0.66%	✓	✓	82.09%	15.14%	2.77%	86,837	29.88%	70.12%	25.04%	32.18%	13.02%	2.50%	0.16%
4	107,247	-0.20%	✓	✓	89.13%	9.24%	1.63%	79,916	7.84%	92.16%	25.51%	63.46%	3.90%	2.35%	0.14%
5	107,044	-0.39%	✓	✓	77.71%	20.33%	1.96%	84,651	22.00%	78.00%	6.79%	65.82%	5.59%	1.69%	0.14%
6	107,743	0.26%	✓	✓	94.08%	4.54%	1.38%	84,311	2.29%	97.71%	9.81%	87.21%	1.39%	1.62%	0.13%
7	107,553	0.08%	✓	✓	92.98%	5.62%	1.40%	84,348	4.73%	95.27%	10.14%	83.65%	1.80%	1.79%	0.17%
8	108,262	0.74%	✓	✓	89.15%	9.42%	1.44%	87,093	7.35%	92.65%	12.46%	74.72%	5.91%	1.84%	0.21%
9	107,645	0.17%	✓	✓	86.39%	12.10%	1.52%	84,999	11.17%	88.83%	5.64%	80.79%	2.62%	2.04%	0.16%
	<b>107,467</b>	<b>1.44%</b>	✓	✓	<b>86.61%</b>	<b>11.61%</b>	<b>1.78%</b>	<b>84,005</b>	<b>12.87%</b>	<b>87.13%</b>	<b>18.44%</b>	<b>63.75%</b>	<b>5.38%</b>	<b>2.38%</b>	<b>0.17%</b>
<b>Notes</b> <ul style="list-style-type: none"> <li>The 1.44% population deviation is within the 10% threshold tolerated by the courts.</li> <li>No districts lean Republican, nine lean Democratic, and none fall in the 45–55% competitive range.</li> <li>There are nine majority-minority districts.</li> </ul>															

Maximum Numeric Deviation: 1,549  
Maximum Percentage Deviation: 1.44%

**BRADLEY E. HEARD**  
415 Zelma Avenue  
Capitol Heights, MD 20743-3126  
(301) 336-0978  
[bradley.heard@gmail.com](mailto:bradley.heard@gmail.com)

August 16, 2021

**VIA EMAIL**

Rajesh A. Kumar, Esq.  
Karen T. Zavakos, Esq.  
Prince George's County Redistricting Commission  
14741 Governor Oden Bowie Dr  
Upper Marlboro, MD 20772

**Re: Proposed Redistricting Criteria and Revised Illustrative County  
Council Redistricting Plan**

Dear Raj & Karen:

This correspondence, which I submit for inclusion into the Redistricting Commission's administrative record, follows my most recent letter of July 25. Now that the Census Bureau has released the P.L. 94-171 total population data, I have modified the proposed redistricting map that I previously submitted on July 25 to align with that data. As with previous iterations, this is a new map, drawn from a clean slate, that is not based on the existing district lines.<sup>1</sup> I have previously suggested that this "fresh look" approach is preferable to the "least change" redistricting criterion that the Commission has thus far advanced, because the 2011 plan was flawed: it did not reflect a good-faith effort to achieve population equality; needlessly split precincts and Metro station areas; and failed to take into account key transportation assets and economic development priorities that counsel in favor of keeping certain communities of interest intact.

This map follows the proposed modified redistricting criteria that I suggested to you on July 25:

- Maintain population equality, with maximum deviation not to exceed 3.5%. (This plan achieves a maximum deviation of 1.44%.)
- Compact, contiguous, and compliant with the Voting Rights Act
- Minimize splits of precincts, municipal boundaries, and CDPs
- Keep Metro station half-mile walksheds together and, minimize splits of Metro line segments (e.g., Central Avenue–Metro Blue Line Corridor, Southern Green Line, etc.)

---

<sup>1</sup> As such, I do not have the in-house software capacity to easily produce a precinct-by-precinct comparison between the existing plan and the plan I am proposing, to determine how many precincts would actually move from their existing districts. However, the Commission's consultant, Dr. Persily, should be able to provide that analysis if it is needed.

Prince George's County Redistricting Commission (Cont'd)

August 16, 2021

Page 2 of 2

Along with this letter, I am including: (1) a PDF of the proposed districting map, a population deviation and racial voting age population analysis (I did not have a chance to update the communities of interest and assets analysis from July 25); and (2) a zip file with shape files, native JSON and GEOJSON files, and CSV files of block and precinct assignment data, which should facilitate the importing of this plan into other redistricting software.

As always, I appreciate the Commission's consideration of these materials. Please do not hesitate to contact me if you need any additional information or clarification in regard to this revised illustrative plan.

Sincerely yours,

*/s/ Bradley E. Heard*

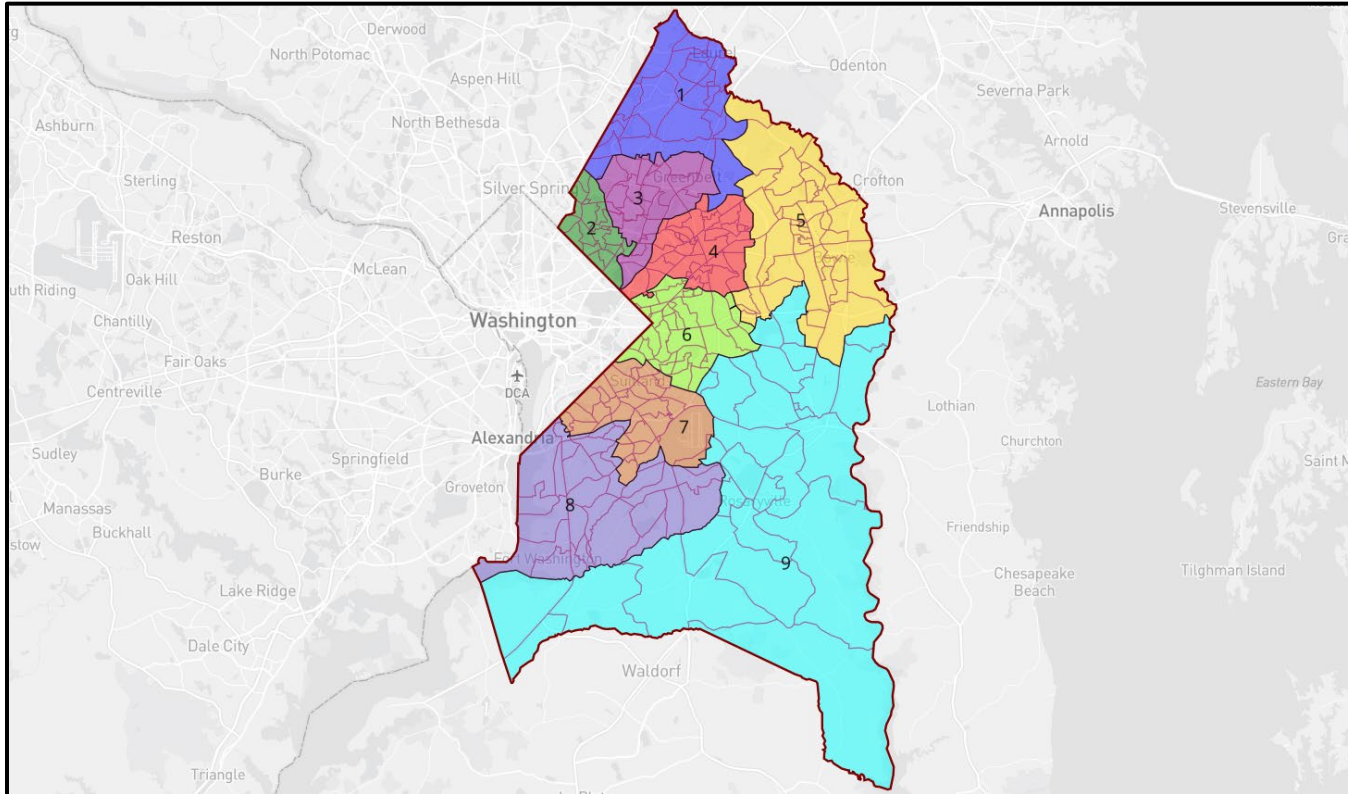
Bradley E. Heard

/bh

Enclosures

cc: Dr. Nate Persily

**PRINCE GEORGE'S COUNTY COUNCIL**  
**SENSIBLE COMMUNITIES ILLUSTRATIVE REDISTRICTING PLAN**  
**(Submitted by Bradley E. Heard—DRA2020 Map 2021-08-15)**





**Population Deviation and Racial Voting Age Population Analysis**  
**Prince George's County Council—Sensible Communities Illustrative Redistricting Plan**  
**(Submitted by Bradley E. Heard—DRA2020 Map 2021-07-25)**

**Based on P.L. 94-171 Total Population Data for 2020**

Total Population: 967,201; Ideal District Population (9 Districts): 107,467

Prince George's County Council 2022															
<div> <div> </div> <div> Map Statistics Analyze Compare Advanced </div> </div>															
Population			Shapes		Partisan Lean			Demographics (VAP)							
ID	Total	+/-			Dem	Rep	Oth	Total	White	Minority	Hispanic	Black	Asian	Native	Pacific
Un	0				0.00%	0.00%	0.00%	0	0.00%	0.00%	0.00%	0.00%	0.00%	0.00%	0.00%
1	106,815	-0.61%	✓	✓	79.40%	18.39%	2.21%	82,992	19.97%	80.03%	22.84%	47.91%	9.59%	2.34%	0.20%
2	106,713	-0.70%	✓	✓	88.53%	9.36%	2.11%	80,902	9.97%	90.03%	49.59%	37.06%	4.30%	5.34%	0.22%
3	108,179	0.66%	✓	✓	82.09%	15.14%	2.77%	86,837	29.88%	70.12%	25.04%	32.18%	13.02%	2.50%	0.16%
4	107,247	-0.20%	✓	✓	89.13%	9.24%	1.63%	79,916	7.84%	92.16%	25.51%	63.46%	3.90%	2.35%	0.14%
5	107,044	-0.39%	✓	✓	77.71%	20.33%	1.96%	84,651	22.00%	78.00%	6.79%	65.82%	5.59%	1.69%	0.14%
6	107,743	0.26%	✓	✓	94.08%	4.54%	1.38%	84,311	2.29%	97.71%	9.81%	87.21%	1.39%	1.62%	0.13%
7	107,553	0.08%	✓	✓	92.98%	5.62%	1.40%	84,348	4.73%	95.27%	10.14%	83.65%	1.80%	1.79%	0.17%
8	108,262	0.74%	✓	✓	89.15%	9.42%	1.44%	87,093	7.35%	92.65%	12.46%	74.72%	5.91%	1.84%	0.21%
9	107,645	0.17%	✓	✓	86.39%	12.10%	1.52%	84,999	11.17%	88.83%	5.64%	80.79%	2.62%	2.04%	0.16%
	<b>107,467</b>	<b>1.44%</b>	✓	✓	<b>86.61%</b>	<b>11.61%</b>	<b>1.78%</b>	<b>84,005</b>	<b>12.87%</b>	<b>87.13%</b>	<b>18.44%</b>	<b>63.75%</b>	<b>5.38%</b>	<b>2.38%</b>	<b>0.17%</b>
<b>Notes</b> <ul style="list-style-type: none"> <li>The 1.44% population deviation is within the 10% threshold tolerated by the courts.</li> <li>No districts lean Republican, nine lean Democratic, and none fall in the 45–55% competitive range.</li> <li>There are nine majority-minority districts.</li> </ul>															

Maximum Numeric Deviation: 1,549  
Maximum Percentage Deviation: 1.44%

**From:** [Small, Trent](#)  
**To:** [Zavakos, Karen T.](#); [Kumar, Rajesh A.](#)  
**Subject:** Redistricting Inquiry  
**Date:** Thursday, May 27, 2021 9:20:51 AM  
**Attachments:** [image001.png](#)

---

**CAUTION:** This email originated from an external email domain which carries the additional risk that it may be a phishing email and/or contain malware.

Good Morning,

I was reaching out to inquire about what mapping solution you all were using for the public input of the redistricting efforts. We have contracted with Esri to implement their Redistricting Solution, but always interested to learn how others are attacking this challenging process. If there is anything that we can be assistance of, don't hesitate to reach out.

Thanks!

***Trent Small, GISP***



**Mapping and  
Geographic  
Information**

Development and Analysis Division Manager  
703.777.0604 (work - office)  
[Trent.Small@loudoun.gov](mailto:Trent.Small@loudoun.gov)

**From:** [Redistricting2021.commission](mailto:Redistricting2021.commission)  
**To:** [Melanie Friesen](mailto:Melanie.Friesen)  
**Cc:** [Redistricting2021.commission](mailto:Redistricting2021.commission)  
**Subject:** RE: Speaker Request  
**Date:** Wednesday, July 14, 2021 7:52:14 AM

---

Ms. Friesen,

I will get back to you later today.

Thanks,

Raj  
240.695.4582

---

**From:** Melanie Friesen [mailto:mfriesen@berwynheightsmd.gov]  
**Sent:** Tuesday, July 13, 2021 4:47 PM  
**To:** Redistricting2021.commission <Redistricting2021.commission@co.pg.md.us>  
**Subject:** Speaker Request

**CAUTION:** This email originated from an external email domain which carries the additional risk that it may be a phishing email and/or contain malware.

Good Afternoon,

I wanted to reach out to find out who we would need to contact regarding having a Speaker from the Redistricting Commission present at the 4-Cities Coalition Meeting (College Park, Berwyn Heights, New Carrollton, and Greenbelt) that will be happening on Wednesday July 28, 2021. The meeting will be held virtually, over Zoom, at 7PM.

If there is someone other than the general inquiry email that I should approach, if you could kindly forward me their information, it would be appreciated.

Respectfully,

*Melanie Friesen*

Town of Berwyn Heights

Town Clerk

Office- (301) 474-5000



**From:** [Kumar, Rajesh A.](#)  
**To:** [tybrownsg@comcast.net](mailto:tybrownsg@comcast.net)  
**Cc:** [Nate Persily](#); [Zavakos, Karen T.](#)  
**Subject:** Request from Tamara Brown re: June 21st Report  
**Date:** Wednesday, July 14, 2021 10:12:00 AM  
**Attachments:** [image002.png](#)  
[image003.png](#)  
[image004.png](#)  
[image005.png](#)  
[image006.png](#)  
[image007.png](#)  
[image008.png](#)  
[6 21 2021 PGC Redistricting Commission Meeting.pdf](#)  
[image001.png](#)  
[Page 7 and 10 Discrepancy.pdf](#)

---

Hi Tamara Brown,

Hope all is well.

This email is in response to your request for information regarding the June 21<sup>st</sup> Report. Please see attached and email string below for full context. I hope you find this information helpful and responsive to your request.

As a reminder, the Commission will hold its first virtual public hearing next Monday, July 19 @ 5:00, to receive public comment on certain preliminary maps posted on the Redistricting Webpage.

Below is the link to sign-up to speak at the public hearing:

<https://pgccouncil.us/FormCenter/Administration-8/Redistricting-Public-Hearing-Sign-Up-For-595>

Below is the link to the Redistricting Webpage to view additional information:

<https://pgccouncil.us/326/Redistricting-Commission>

If you chose not to sign-up to speak at the public hearing, you may view the hearing at the following link:

<https://pgccouncil.us/LIVE>

Thank you,

Raj  
240.695.4582

---

**From:** Nate Persily [mailto:[npersily@law.stanford.edu](mailto:npersily@law.stanford.edu)]  
**Sent:** Tuesday, July 6, 2021 7:37 AM  
**To:** Robert Gelner <[Robert.Gelner@ppd.mncppc.org](mailto:Robert.Gelner@ppd.mncppc.org)>  
**Cc:** Kumar, Rajesh A. <[RAKumar@co.pg.md.us](mailto:RAKumar@co.pg.md.us)>; Cannistra, James <[James.Cannistra@ppd.mncppc.org](mailto:James.Cannistra@ppd.mncppc.org)>; Barenblitt, Nora <[Nora.Barenblitt@ppd.mncppc.org](mailto:Nora.Barenblitt@ppd.mncppc.org)>; Zavakos, Karen T. <[ktzavakos@co.pg.md.us](mailto:ktzavakos@co.pg.md.us)>  
**Subject:** Request from Tamara Brown re: June 21st Report

**CAUTION:** This email originated from an external email domain which carries the additional risk that it may be a phishing email and/or contain malware.

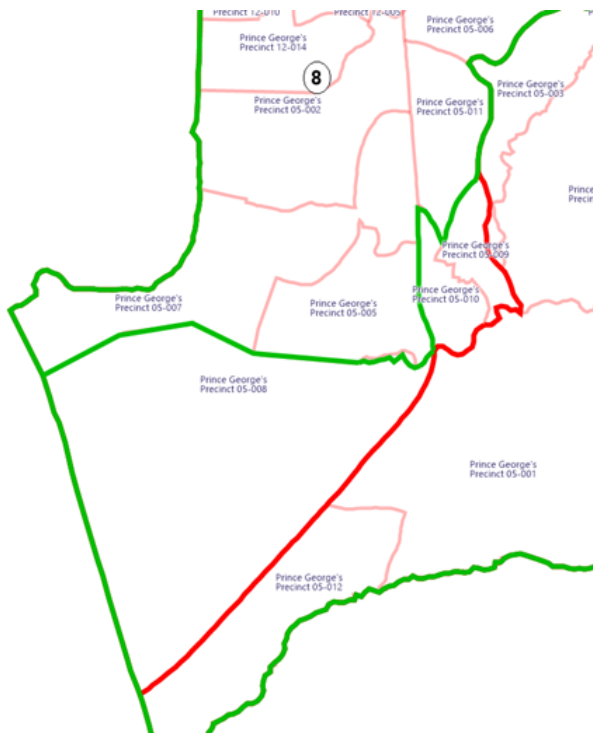
Dear Rob (and Raj),

Thank you so much for this. This is all consistent. Some of what was explained orally at the hearing does not appear on the powerpoint. In order to bring District 8 to under 4.5% deviation, we would only move precinct 05-010 from District 9 to District 8. In order to bring District 8 and 9 to under 1% deviation, we would move precincts 05-010, 05-009, and 05-008 from District 9 to District 8. See map below which highlights existing districts in green and proposed changes in red. The second map on the powerpoint was showing ADDITIONAL precincts that would be moved beyond the moves made to achieve under 4.5% deviation.

In short, the number of precincts to be moved from District 9 to District 8 depends on the population deviation threshold the Commission desires for its plan. If under 5%, then no change needs to be made. If under 4.5% then only precinct 05-010 needs to be moved. If under 1 percent, then 05-010, 05-009, and 05-008 could be moved. The huge caveat here is that we are dealing with projected data and small levels of geography, so I guarantee that the official census data will be different. These maps should be viewed as an exercise that answers the question "what if the final census data resemble the projections? Which precincts could be moved to achieve population equality at different thresholds?".

Feel free to send this email to Ms. Brown if you think it appropriate.

Best regards,  
Nate Persily



Nate Persily

James B. McClatchy Professor of Law  
Stanford Law School  
559 Nathan Abbott Way  
Stanford, CA 94305-8610  
(917) 570-3223  
[npersily@stanford.edu](mailto:npersily@stanford.edu)

[www.persily.com](http://www.persily.com)

**From:** Gelner, Robert [mailto:Robert.Gelner@ppd.mnccppc.org]

**Sent:** Tuesday, July 6, 2021 6:51 AM

**To:** Kumar, Rajesh A. <RAKumar@co.pg.md.us>; Cannistra, James <James.Cannistra@ppd.mnccppc.org>

**Cc:** Barenblitt, Nora <Nora.Barenblitt@ppd.mnccppc.org>; Nate Persily <npersily@law.stanford.edu>; Zavakos, Karen T. <ktzavakos@co.pg.md.us>

**Subject:** Request from Tamara Brown re: June 21st Report

**CAUTION:** This email originated from an external email domain which carries the additional risk that it may be a phishing email and/or contain malware.

For consideration, I have attached the last PDF I received on this topic and the one I believe is referenced in the original email below.

On page six and seven of the PDF titled "6 21 2021 PGC Redistricting Commission Meeting," Precinct 05-010 is proposed to move from Council District 9 to Council District 8.

On page 10 of the PDF titled "6 21 2021 PGC Redistricting Commission Meeting," Precinct 05-008 and 05-009 are proposed to move from Council District 9 to Council District 8. Please be advised, there appears to be a discrepancy between Dr. Persily's map displayed on pages seven and 10 versus the Planning Departments 2014 Councilmanic District boundary data. The graphic on pages seven and 10 appears to already include Precinct 05-010 in District 8 (being one of the precincts highlighted on page seven), whereas our data shows Precinct 05-010 currently part of Council District 9. Please see the attached PDF titled "Page 7 and 10 Discrepancy" for an illustration.

Please note that page 12 of the PDF titled "6 21 2021 PGC Redistricting Commission Meeting" appears to draw Council Districts 8 and 9 per the current Planning Department data..

Regards,  
Rob

## Robert Gelner

Principal GIS Specialist | Information Management Division



14741 Governor Oden Bowie Drive, Upper Marlboro, MD 20772

301-952-4563 | [robert.gelner@ppd.mnccppc.org](mailto:robert.gelner@ppd.mnccppc.org)



---

**From:** Kumar, Rajesh A. <[RAKumar@co.pg.md.us](mailto:RAKumar@co.pg.md.us)>  
**Sent:** Monday, July 5, 2021 7:23 PM  
**To:** Cannistra, James <[james.cannistra@ppd.mnccppc.org](mailto:james.cannistra@ppd.mnccppc.org)>  
**Cc:** Gelner, Robert <[Robert.Gelner@ppd.mnccppc.org](mailto:Robert.Gelner@ppd.mnccppc.org)>; Barenblitt, Nora <[Nora.Barenblitt@ppd.mnccppc.org](mailto:Nora.Barenblitt@ppd.mnccppc.org)>; Nate Persily <[npersily@law.stanford.edu](mailto:npersily@law.stanford.edu)>; Zvakos, Karen T. <[ktzavakos@co.pg.md.us](mailto:ktzavakos@co.pg.md.us)>  
**Subject:** Request from Tamara Brown re: June 21st Report

[EXTERNAL EMAIL] Exercise caution when opening attachments, clicking links, or responding.

Jim,

Please see email below. Can you provide information to Nate and group first and then explain request and your response. I would like to have internal group vet for accuracy before responding to Ms. Brown prior to public hearing. If you need clarification on this request, please contact Nate.

Raj

---

**From:** Nate Persily [mailto:[npersily@law.stanford.edu](mailto:npersily@law.stanford.edu)]  
**Sent:** Monday, July 5, 2021 6:07 PM  
**To:** Kumar, Rajesh A. <[RAKumar@co.pg.md.us](mailto:RAKumar@co.pg.md.us)>  
**Subject:** Request from Tamara Brown re: June 21st Report

CAUTION: This email originated from an external email domain which carries the additional risk that it may be a phishing email and/or contain malware.

Hello Professor Persily. I hope you had a wonderful holiday weekend. I am reviewing your June 21st report for Prince George's County. Is it possible for you to provide me the specific precincts that you propose to move from Council District 9 to 8 for all 3 Least Change deviations? It's a little difficult to decipher the granular street or precincts based on the maps provided. Thanks.  
Tamara

Is it 05-010, 05-009, 05-003, 05-004 or all of the above or something combo of these precincts. Feel free to email me at [tybrownesq@comcast.net](mailto:tybrownesq@comcast.net) with a more detailed precinct designation. Thanks again.

Tamara

I told her that all communications must go through you or someone else at the county.

--

-----  
Nate Persily

James B. McClatchy Professor of Law  
Stanford Law School  
559 Nathan Abbott Way  
Stanford, CA 94305-8610  
(917) 570-3223  
[npersily@stanford.edu](mailto:npersily@stanford.edu)

[www.persily.com](http://www.persily.com)

---

This E-mail and any of its attachments may contain Prince George's County Government or Prince George's County 7th Judicial Circuit Court proprietary information or Protected Health Information, which is privileged and confidential. This E-mail is intended solely for the use of the individual or entity to which it is addressed. If you are not the intended recipient of this E-mail, you are hereby notified that any dissemination, distribution, copying, or action taken in relation to the contents of and attachments to this E-mail is strictly prohibited by federal law and may



expose you to civil and/or criminal penalties. If you have received this E-mail in error, please notify the sender immediately and permanently delete the original and any copy of this E-mail and any printout.

**From:** [Redistricting2021.commission](mailto:Redistricting2021.commission)  
**To:** [Redistricting2021.commission](mailto:Redistricting2021.commission); [Melanie Friesen](mailto:mfriesen@berwynheightsmd.gov)  
**Subject:** Speaker Request from the Town of Berwyn Heights  
**Date:** Wednesday, July 14, 2021 10:47:28 AM

---

Ms. Friesen,

I will submit your request to the Commission.

As a reminder, the Commission will hold its first virtual public hearing next Monday, July 19 @ 5:00, to receive public comment on certain preliminary maps posted on the Redistricting Webpage.

Below is the link to sign-up to speak at the public hearing:

<https://pgccouncil.us/FormCenter/Administration-8/Redistricting-Public-Hearing-Sign-Up-For-595>

Below is the link to the Redistricting Webpage to view additional information:

<https://pgccouncil.us/326/Redistricting-Commission>

If you chose not to sign-up to speak at the public hearing, you may view the hearing at the following link:

<https://pgccouncil.us/LIVE>

Thank you,

Raj  
240.695.4582

---

**From:** Redistricting2021.commission  
**Sent:** Wednesday, July 14, 2021 7:52 AM  
**To:** Melanie Friesen <[mfriesen@berwynheightsmd.gov](mailto:mfriesen@berwynheightsmd.gov)>  
**Cc:** Redistricting2021.commission <[Redistricting2021.commission@co.pg.md.us](mailto:Redistricting2021.commission@co.pg.md.us)>  
**Subject:** RE: Speaker Request

Ms. Friesen,

I will get back to you later today.

Thanks,

Raj  
240.695.4582

---

**From:** Melanie Friesen [<mailto:mfriesen@berwynheightsmd.gov>]  
**Sent:** Tuesday, July 13, 2021 4:47 PM  
**To:** Redistricting2021.commission <[Redistricting2021.commission@co.pg.md.us](mailto:Redistricting2021.commission@co.pg.md.us)>  
**Subject:** Speaker Request

**CAUTION:** This email originated from an external email domain which carries the additional risk that it may be a phishing email and/or contain malware.

Good Afternoon,  
I wanted to reach out to find out who we would need to contact regarding having a Speaker from the Redistricting Commission present at the 4-Cities Coalition Meeting (College Park, Berwyn Heights, New Carrollton, and Greenbelt) that will be happening on Wednesday July 28, 2021. The meeting will be held virtually, over Zoom, at 7PM.  
If there is someone other than the general inquiry email that I should approach, if you could kindly forward me their information, it would be appreciated.

Respectfully,

*Melanie Friesen*

Town of Berwyn Heights  
Town Clerk  
Office- (301) 474-5000



**From:** [Redistricting2021.commission](mailto:Redistricting2021.commission)  
**To:** [Redistricting2021.commission](mailto:Redistricting2021.commission); [Kyle Snyder](mailto:ksnyder@uppermarlboromd.gov)  
**Subject:** RE: Town of Upper Marlboro Question  
**Date:** Wednesday, July 14, 2021 10:31:57 AM  
**Attachments:** [image001.png](#)

---

Mr. Snyder,

I will forward your request to Dr. Persily, consultant to the Commission, and Parking and Planning GIS staff for a response.

As a reminder, the Commission will hold its first virtual public hearing next Monday, July 19 @ 5:00, to receive public comment on certain preliminary maps posted on the Redistricting Webpage.

Below is the link to sign-up to speak at the public hearing:

<https://pgccouncil.us/FormCenter/Administration-8/Redistricting-Public-Hearing-Sign-Up-For-595>

Below is the link to the Redistricting Webpage to view additional information:

<https://pgccouncil.us/326/Redistricting-Commission>

If you chose not to sign-up to speak at the public hearing, you may view the hearing at the following link:

<https://pgccouncil.us/LIVE>

Thank you,

Raj  
240.695.4582

---

**From:** Redistricting2021.commission  
**Sent:** Wednesday, July 14, 2021 7:53 AM  
**To:** Kyle Snyder <[ksnyder@uppermarlboromd.gov](mailto:ksnyder@uppermarlboromd.gov)>  
**Cc:** Redistricting2021.commission <[Redistricting2021.commission@co.pg.md.us](mailto:Redistricting2021.commission@co.pg.md.us)>  
**Subject:** RE: Town of Upper Marlboro Question

Mr. Snyder,

I will get back to you later today.

Raj

240.695.4582

---

**From:** Kyle Snyder [<mailto:ksnyder@uppermarlboromd.gov>]

**Sent:** Wednesday, July 7, 2021 2:08 PM

**To:** Redistricting2021.commission <[Redistricting2021.commission@co.pg.md.us](mailto:Redistricting2021.commission@co.pg.md.us)>

**Subject:** Town of Upper Marlboro Question

**CAUTION:** This email originated from an external email domain which carries the additional risk that it may be a phishing email and/or contain malware.

Good afternoon,

This question is not necessarily for the July 19 public hearing, but has the Redistricting Commission discussed the Council boundaries around the Town of Upper Marlboro? We are currently fully in District 9, however, we are currently in the process of annexing areas that would expand the Town limits North and East into District 6. The annexation process should be completed and in effect by October 2021. We just wanted to bring this to the Commission's attention, and check and see if there had been any discussions on the boundaries between 9 and 6 around the Town of Upper Marlboro. Thank you,

---

Kyle Snyder

Town Administrator

The Town of Upper Marlboro

*Prince George's County Seat of Government*

14211 School Lane, Upper Marlboro, MD. 20772

**O:** (301) 627-6905 | **Fax:** (301) 627-2080



**From:** [sherman.malone@verizon.net](mailto:sherman.malone@verizon.net)  
**To:** [Redistricting2021.commission](http://Redistricting2021.commission)  
**Cc:** "Sabrina Malone"; [Ron.Watson1@verizon.net](mailto:Ron.Watson1@verizon.net)  
**Subject:** Re-District Collington Station - Manors out of District 23B and into District 6  
**Date:** Sunday, July 25, 2021 2:10:48 PM

---

**CAUTION:** This email originated from an external email domain which carries the additional risk that it may be a phishing email and/or contain malware.

Redistricting Commission,

We are not in favor of subject proposal and propose Colington Station remain in District 23B.

//SIGNED//

Dr. and Mrs. Sherman A. Malone  
15300 Jodphur Dr  
Bowie Maryland 20721  
Cell: (301) 706-4990



**From:** [Barbara C Gardner](#)  
**To:** [Redistricting2021.commission](#)  
**Cc:** [Zavakos, Karen T.](#); [vantrumdst@gmail.com](#); [bonnielsermons@gmail.com](#)  
**Subject:** Redistricting Proposal Submissions from the Public (Maps by Bradley Hurd)  
**Date:** Wednesday, July 21, 2021 9:34:49 AM

---

**CAUTION:** This email originated from an external email domain which carries the additional risk that it may be a phishing email and/or contain malware.

Good morning,

I attended the public meeting of the PGC Redistricting Commission on Monday, June 19th. At that meeting a member of the public, Mr. Hurd, presented detail information that he had submitted to the Commission. While he provided a synopsis and discussion during the meeting on his proposals, I noticed that in the document that you've posted on the website, **Proposals in Response to Comments Received at or Before the July 19 Public Hearing** by *Nate Persily*, he was not credited with suggestions while other quotes were included. In that document, Mr. Persily provided updated proposals from his understanding of the comments and suggestions from the meeting.

While I appreciate Mr. Persily's synopsis, the meeting pointed out that there is a lot of information to be digested in a short period of time. As a concerned citizen looking for details and input on this important endeavor, I'd really like to hear and read all perspectives without filters, if possible. Therefore, I'd like to request that you post the submissions from the public. I'm particularly interested in the details and proposed maps submitted by the public. Thank you for your consideration.

Warm Regards,  
Barbara C. Gardner

July 30, 2021

Prince George's County Redistricting Commission  
[Redistricting2021@co.pg.md.us](mailto:Redistricting2021@co.pg.md.us)

Comments on Redistricting Options - June 21, 2021 Presentation and July 26, 2021 Meeting Discussion

On behalf of the residents of Collington Manor in Bowie, MD, these comments are presented for consideration of the Prince George's County Redistricting Commission. The dedication and efforts thus far by members of this redistricting endeavor are acknowledged and appreciated. We support the position that keeping neighborhoods and cities together is essential to the representation of residents and the voice of residents in the given community. Splitting representation of Bowie residents between county districts dilutes their voice on issues germane to residents in that city.

The Collington Manor community makes the following recommendations:

1. Collington Manor should not be separated from the rest of the city of Bowie in its representation on the County Council. Since we all pay taxes to the City of Bowie, our collective representation should be maintained in the same district. This assures that one part of Bowie will not be treated any differently than another part of the city.
2. As vested residents of the City of Bowie, moving this community from District 4 in effect dilutes the strength of our voice as Bowie residents on significant matters considered by the County, i.e., services, schools, development, roads and traffic that directly impact the Collington Manor community.
3. Current Census 2020 projections as presented in the Commission working documents, anticipates a 2.37% deviation for District 4. This deviation is far below the 5% deviation allowed by law.

The residents and community of Collington Manor do not support splitting the existing structure in District 4. Our unified voice as residents of the City of Bowie should be maintained without being placed in two separate districts. This in effect disenfranchises the residents of Collington Manor which is not in the best interest of our community. We recommend that the current district status of Bowie homeowners and residents in District 4 be maintained without any change. We hope this is the position presented to the County Council by the Prince Georges County Redistricting Commission.

Respectfully,

Iredia Hutchinson  
14504 Jones Bridge Road  
Bowie, MD 20721  
HOA Manager on behalf of  
Collington Manor Residents and Board of Directors

**From:** [IB HUTCH](#)  
**To:** [Redistricting2021@co.pg.md.us](mailto:Redistricting2021@co.pg.md.us)  
**Cc:** [Kumar, Rajesh A.](#)  
**Subject:** Collington Manor Redistricting Comments  
**Date:** Friday, July 30, 2021 10:14:16 AM  
**Attachments:** [Collington Manor Redistricting 7-30-21 Comments.pdf](#)  
**Importance:** High

---

**CAUTION:** This email originated from an external email domain which carries the additional risk that it may be a phishing email and/or contain malware.

The attached comments are submitted for consideration of the Prince George's County Redistricting Commission. Confirmation of receipt is appreciated.

Iredia Hutchinson  
14504 Jones Bridge Road  
Bowie, MD 20721

**From:** [Ranzeno Barnes](#)  
**To:** [Redistricting2021.commission](#); [Clerk of the Council](#); [Turner, Todd M.](#); [rndebumadu@citybowie.org](#); [iharrison@citybowie.org](#); [tadams@citybowie.org](#)  
**Subject:** COLLINGTON STATION REDISTRICTING CONCERN  
**Date:** Thursday, July 29, 2021 6:25:37 PM

---

**CAUTION:** This email originated from an external email domain which carries the additional risk that it may be a phishing email and/or contain malware.

Good Afternoon, All

I have been a resident of the city of Bowie for over 25 years and have enjoyed the service and support that has come with that. As you receive the many emails regarding this very important issue, I want you to know that there are many that won't respond or may not respond in a timely manner. However we all voice the same concern with redistricting us. We have been paying high tax dollars to protect our property values and schools districts and don't deserve to be moved to a worst situation. It's not hard to understand the situation, imagine living in a multi million dollar community in Potomac Maryland and being told that we are moving your district to a lower class district in the area. Secondly you just happen to live in the community. We strongly oppose this attempt and ask that we get your full support to stop this action.

We Thank You ahead of time for all actions that you provide to help us defeat this redistricting attempt

Sincerely, Very concerned resident

**From:** [Janis Willard-Robinson](#)  
**To:** [Redistricting2021.commission](#)  
**Subject:** Collington Station Resident - Opposition to Move from Legislative District 4 to District 6  
**Date:** Tuesday, July 27, 2021 12:00:12 PM

---

**CAUTION:** This email originated from an external email domain which carries the additional risk that it may be a phishing email and/or contain malware.

My name is Janis Willard-Robinson. My address is 15003 Jansmore Court, I am a resident of Bowie, Maryland within the Collington Station subdivision.

I am submitting my comments to express my opposition of the plan to transfer the Bowie residents of Collington Station, The Manors @ Collington Station and The Hamptons at Woodmore from legislative District 4 to District 6.

As a taxpayer and resident of Bowie, Maryland this planned action will disenfranchise myself and other residents within these communities. We will not have adequate legislative representation due to living in Bowie, Maryland but being represented legislatively in another district. We are paying a significant amount of taxes and therefore should be allowed to remain in the district for which we are paying taxes and receiving services. Additionally, there has not been adequate notification provided to the impacted residents in this community. In addition, the website for which this information is posted is cluttered with information and is difficult to maneuver. In closing, I firmly believe the architect of this plan lacks the full understanding of the neighborhood and citizens and therefore has not fully considered the impact to the neighborhood and community. Again, I stand in opposition of these plans and request this component of the redistricting activity not be continued. Please include my comments for the July 26th Redistricting Commission Meeting.

Respectfully Submitted  
Janis Willard-Robinson  
240.478.8634

**From:** [paula mckenzie](#)  
**To:** [Redistricting2021.commission](#); [Clerk of the Council](#)  
**Cc:** [Turner, Todd M.](#); [rndebumadu@cityofbowie.org](#); [iharrison@cityofbowie.org](#); [tadams@cityofbowie.org](#)  
**Subject:** concerned resident of Collingston Station  
**Date:** Thursday, July 29, 2021 9:47:30 AM

---

**CAUTION:** This email originated from an external email domain which carries the additional risk that it may be a phishing email and/or contain malware.

Good morning,

It has come to my attention that there is vote to rezone my community. I would like to express how disappointed my family and I are in hearing this news. What does this mean for the value of my property? My family and I has worked very hard to maintain our mortgage and property taxes payments over the past 11 years. It has been challenging at times. Now people are deciding our future!

I'll appreciate a favorable outcome in getting the support from all persons that are tagged on this email. Thank for your help.

*Paula Wright*

**From:** [Andrew Gilliam](#)  
**To:** [Redistricting2021.commission](#)  
**Subject:** Movement of Collington Station From Bowie  
**Date:** Thursday, July 29, 2021 2:37:23 PM

---

CAUTION: This email originated from an external email domain which carries the additional risk that it may be a phishing email and/or contain malware.

Question :

If is my understanding that the reason for this proposed move, is to maintain population levels. There is a proposed new development on route 301 across from the

WAWA , which I believe is a part of Upper Marlboro. Can you explain what effect This new development would have on population levels for Bowie and Upper Marlboro.

I think this new development will add to Upper Marlboro's population levels, which means there is no need for this proposed change.

Andrew Gilliam

202--359-0953 ( Cell )

( Jensford CT , Bowie MD )



**From:** [gmacon5478@aol.com](mailto:gmacon5478@aol.com)  
**To:** [Redistricting2021.commission](http://Redistricting2021.commission)  
**Subject:** Opposition to Redistricting  
**Date:** Thursday, July 29, 2021 11:14:11 AM

---

**CAUTION:** This email originated from an external email domain which carries the additional risk that it may be a phishing email and/or contain malware.

To Whom It May Concern:

We are in opposition to redistricting Collington Station and Collington Manor out of 23B into 6. First of all this redistricting will cause our home value to drop. Second we brought our home in Bowie that's were we wanted to live, not in any other location.

How would you feel if someone changed where you live?

Thank you,

George and Jacqueline Macon

[Sent from the all new AOL app for Android](#)

To: Prince George's (PG) County 2021 Redistricting Commission  
From: Shirley T. Pitts  
Date: July 28, 2021  
Subject: Redistricting in PG County District 4 to Possible District 6

First, let me say I am in no way up to speed as I like with matters that effect the city where I reside. I gathered from the presentation given by Dr. Nathaniel Persily I need to become more knowledgeable on such matters.

I have been a resident of Collington Station for the past 25+ years. Upon moving to this location in 1995 my city address was Upper Marlboro, MD 20772 then in 2005 it changed to Bowie, MD 20721. I tuned in for the Live Stream held on Monday, July 25. Thought as a PG County Resident I would pass along a few issues/concerns which were not very clear to me.

The deadline for the Redistricting Commission to provide PG County Council with their recommendation for the redistricting change is **September 1** which in my opinion feels rushed. I understand on January 28, 2021, that the PG Council adopted a resolution appointing the PG Redistricting Commission pursuant to the provision of Section 305 of the County Charter. I am assuming this was done as the COVID-19 Pandemic caused delays in obtaining the actual 2020 Census figures and other county issues.

With the Census held every 10 years and the 2020 figures still not received by the commission for PG County. According to the Commission Chairman/Pastor Robinson during the Live Stream with a guesstimate of August 16 if then. How can an accurate count be determined? Would Dr. Persily come up with an aggregate over the past few years or do you hope that 2020 Census figures are received before the submission by the commission?

Especially over the past 10 years there has been new developments within District 4. With the latest new development (**South Lake located at Route 214 and Route 301**) which is less than a mile from Collington Station. What are the tax ramifications of moving to another district? There are several other issues (i.e., schools, police presence, trash pickup, etc.) that would arise from this move. I'd prefer to keep Collington Station in its current district as according to Dr. Persily's Chart 6 (**Remedy for Malapportionment of District 6: Move of One Precinct from Bowie, from District 4 to District 6**) we are a small piece of the puzzle.

I appreciate your time in reading my issues/concerns.

**From:** [Skapak](#)  
**To:** [Redistricting2021.commission](#)  
**Subject:** Please stop the redistricting  
**Date:** Thursday, July 29, 2021 3:52:25 PM

---

CAUTION: This email originated from an external email domain which carries the additional risk that it may be a phishing email and/or contain malware.

Please stop the redistricting push. We want to keep Collington Station in Bowie!

**From:** [CARL BARTEE](#)  
**To:** [Redistricting2021.commission](#)  
**Cc:** [Paul and Janis Robinson](#); [Harvey Gates](#); [Vicky V. Massey](#); [Sidney Wise](#); [Wanda McCullough](#); [Stephen Clay](#); [Darryl Anderson](#); [Kenneth Trass](#); [Patrice](#); [Richard Hayes](#); [Jerry & Wilma Featherstone](#)  
**Subject:** RR: Opposition to any plan for moving COLLINGTON STATION out of the Councilmanic District 4  
**Date:** Friday, July 30, 2021 3:51:20 PM  
**Attachments:** [RE Opposition to any plan for moving COLLINGTON STATION out of the Councilmanic District 4.docx](#)

---

**CAUTION:** This email originated from an external email domain which carries the additional risk that it may be a phishing email and/or contain malware.

The attachment is an email in "Opposition to any plan for moving COLLINGTON STATION out of the Councilmanic District 4"

Yours truly,

Carl and Inez Bartee

**From:** [CARL BARTEE](#)  
**To:** [Redistricting2021.commission](#)  
**Cc:** [Paul and Janis Robinson](#); [Harvey Gates](#); [Vicky V. Massey](#); [Sidney Wise](#); [Wanda McCullough](#); [Stephen Clay](#); [Darryl Anderson](#); [Kenneth Trass](#); [Patrice](#); [Richard Hayes](#); [Jerry & Wilma Featherstone](#)  
**Subject:** RR: Opposition to any plan for moving COLLINGTON STATION out of the Councilmanic District 4  
**Date:** Friday, July 30, 2021 3:51:20 PM  
**Attachments:** [RE Opposition to any plan for moving COLLINGTON STATION out of the Councilmanic District 4.docx](#)

---

**CAUTION:** This email originated from an external email domain which carries the additional risk that it may be a phishing email and/or contain malware.

The attachment is an email in "Opposition to any plan for moving COLLINGTON STATION out of the Councilmanic District 4"

Yours truly,

Carl and Inez Bartee

**From:** [Gail D. Bass](#)  
**To:** [Redistricting2021.commission](#)  
**Cc:** [ndebumadu@cityofbowie.org](#); [jharrison@cityofbowie.org](#); [ron.watson@house.state.md.us](#); [marvin.holmes@house.state.md.us](#); [cshoacivicengagement@gmail.com](#)  
**Subject:** Collington Station - 2021 Prince George's County Redistricting  
**Date:** Friday, July 30, 2021 7:34:52 PM

---

**CAUTION:** This email originated from an external email domain which carries the additional risk that it may be a phishing email and/or contain malware.

Date: July 30, 2021

To: 2021 Prince George's County Redistricting Commissioners  
Prince George's County

From: David & Gail Bass  
Prince George's County District 4  
15105 Johnstone Lane  
Bowie, MD 20721

Re: Proposed Redistricting of Our Precinct from District 4 to District 6

I am a resident and concerned citizen of Prince George's County, MD. My interest in the Redistricting Commission's work is two-fold: (1) to ensure that our County is a model of political integrity in the redistricting process and (2) to ensure that the tenet of keeping neighborhoods and cities together is upheld.

As a resident of Collington Station, which is located in the Incorporated City of Bowie, Maryland, I want to express my opposition to any plan for separating my neighborhood out of the Councilmanic District 4 that represents all of Bowie, Maryland to the Councilmanic District 6.

My family would like to remain in District 4 as it ensures our community of interest rests with our Bowie neighbors and follows the least change ideal and the desire to preserve residential community of interest.

While we recognize these are preliminary data, we are concerned that when population data do show a range within the lawful deviations, efforts will be made to change numbers without concern for the people. Please be mindful that splitting numbers, whether statistical or empirical, does involve real people. And giving consideration to the human factor does not pose a violation to the US Constitution.

We are a part of PG County District 4, which represents Bowie and would like to remain so.

Regards,

SIGNED COPY ATTACHED

David & Gail Bass

**From:** [Jonathan Davis](#)  
**To:** [Redistricting2021.commission](#)  
**Cc:** [rndebumadu@cityofbowie.org](#); [jharrison@cityofbowie.org](#); [tadams@cityofbowie.org](#); [ron.watson@house.state.md.us](#); [marvin.holmes@house.state.md.us](#)  
**Subject:** Collington Station - Prince George's County Redistricting Opposition  
**Date:** Friday, July 30, 2021 6:26:38 PM

---

**CAUTION:** This email originated from an external email domain which carries the additional risk that it may be a phishing email and/or contain malware.

Date: July 30, 2021

To: 2021 Prince George's County Redistricting Commissioners  
Prince George's County

From: Jonathan Davis  
Prince George's County District 4  
15107 Joppa Place  
Bowie, MD 20721-7232

Re: Proposed Redistricting of Our Precinct from District 4 to District 6

I am a resident and concerned citizen of Prince George's County, MD. My interest in the Redistricting Commission's work is two-fold: (1) to ensure that our County is a model of political integrity in the redistricting process and (2) to ensure that the tenet of keeping neighborhoods and cities together is upheld.

As a resident of Collington Station, which is located in the Incorporated City of Bowie, Maryland, I want to express my opposition to any plan for separating my neighborhood out of the Councilmanic District 4 that represents all of Bowie, Maryland to the Councilmanic District 6.

My family would like to remain in District 4 as it ensures our community of interest rests with our Bowie neighbors and follows the least change ideal and the desire to preserve residential community of interest.

While we recognize these are preliminary data, we are concerned that when population data do show a range within the lawful deviations, efforts will be made to change numbers without concern for the people. Please be mindful that splitting numbers, whether statistical or empirical, does involve real people. And giving consideration to the human factor does not pose a violation to the US Constitution.

We are a part of PG County District 4, which represents Bowie and would like to remain so.

Very Respectfully,

Jonathan Davis



Date: July 30, 2021

To: 2021 Prince George's County Redistricting Commissioners  
Prince George's County

From: Horace R. Robinson  
Prince George's County District 4  
812 Johnson Grove Lane  
Bowie, MD 20721

Re: Proposed Redistricting of Our Precinct from District 4 to District 6

I am a resident of Collington Station and concerned citizen of Prince George's County, MD. My interest in the Redistricting Commission's work is two-fold: (1) to ensure that our County is a model of political integrity in the redistricting process and (2) to ensure that the tenet of keeping neighborhoods and cities together is upheld.

As a resident of Collington Station, which is located in the Incorporated City of Bowie, Maryland, I want to express my opposition to any plan for separating my neighborhood out of the Councilmanic District 4 that represents all of Bowie, Maryland to the Councilmanic District 6.

My family would like to remain in District 4 as it ensures our community of interest rests with our Bowie neighbors and follows the least change ideal and the desire to preserve residential community of interest.

While we recognize these are preliminary data, we are concerned that when population data do show a range within the lawful deviations, efforts will be made to change numbers without concern for the people. Please be mindful that splitting numbers, whether statistical or empirical, does involve real people. And giving consideration to the human factor does not pose a violation to the US Constitution.

We are a part of PG County District 4, which represents Bowie and would like to remain so.

Date: July 30, 2021

To: 2021 Prince George's County Redistricting Commissioners  
Prince George's County

From: **William and Daria BAity**  
Prince George's County District 4  
**205 Johnsberg Lane**  
Bowie, MD 20721

Re: Proposed Redistricting of Our Precinct from District 4 to District 6

I am a resident and concerned citizen of Prince George's County, MD. My interest in the Redistricting Commission's work is two-fold: (1) to ensure that our County is a model of political integrity in the redistricting process and (2) to ensure that the tenet of keeping neighborhoods and cities together is upheld.

As a resident of Collington Station, which is located in the Incorporated City of Bowie, Maryland, I want to express my opposition to any plan for separating my neighborhood out of the Councilmanic District 4 that represents all of Bowie, Maryland to the Councilmanic District 6.

We have been a resident of Collington Station since 1991. One of the driving factors in our selection of this community was that it would be a part of the city of Bowie. My family would like to remain in District 4 as it ensures our community of interest rests with our Bowie neighbors and follows the least change ideal and the desire to preserve residential community of interest.

While we recognize these are preliminary data, we are concerned that when population data do show a range within the lawful deviations, efforts will be made to change numbers without concern for the people. Please be mindful that splitting numbers, whether statistical or empirical, does involve real people. And giving consideration to the human factor does not pose a violation to the US Constitution.

We are a part of PG County District 4, which represents Bowie and would like to remain so.

Andrea D. Williamson  
Prince George's County District 4  
15203 Jennings Lane  
Bowie, MD 20721

July 30, 2021

2021 Prince George's County  
Redistricting Commissioners  
Prince George's County, MD

Subject: Proposed Redistricting of Our Precinct from District 4 to District 6

I am a resident and concerned citizen of Prince George's County, MD. My interest in the Redistricting Commission's work is two-fold: (1) to ensure that our County is a model of political integrity in the redistricting process and (2) to ensure that the tenet of keeping neighborhoods and communities whole as they craft new legislative and congressional district maps.

As an 11-year resident of Collington Station, which is located in the Incorporated City of Bowie, Maryland, I want to express my opposition to any plan for separating my neighborhood out of the Councilmanic District 4 that represents all of Bowie, Maryland to the Councilmanic District 6.

My family would like to remain in District 4 as it ensures our community of interest rests with our Bowie neighbors and follows the least change ideal and the desire to preserve residential community of interest.

While we recognize these are preliminary data, we are concerned that when population data shows a range within the lawful deviations, efforts will be made to change population numbers without concerns of the residents. Please be mindful that splitting numbers, whether statistical or empirical, does involve the residents of the City of Bowie limits.

My family is part of Prince George's County District 4, which represents the City of Bowie and would like to remain in the Councilmanic District 4.

Sincerely,

*Andrea D. Williamson*

**From:** [Ramsay Family](#)  
**To:** [Redistricting2021.commission](#)  
**Subject:** Proposed Redistricting of Our Precinct from District 4 to District 6  
**Date:** Friday, July 30, 2021 7:55:40 PM

---

**CAUTION:** This email originated from an external email domain which carries the additional risk that it may be a phishing email and/or contain malware.

Date: July 30, 2021

From: Douglas Ramsay  
Prince George's County District 4  
314 Johnsberg Lane  
Bowie, MD 20721

I am a resident and concerned citizen of Prince George's County, MD, and a resident of Collington Station, which is located in the Incorporated City of Bowie, Maryland, I want to express my opposition to any plan for separating my neighborhood out of District 4 that represents all of Bowie, Maryland to District 6.

We are a part of PG County District 4, which represents Bowie and would like to remain so.

**From:** [natwill](#)  
**To:** [Redistricting2021.commission](#)  
**Cc:** [rndebumadu@cityofbowie.org](#); [jharrison@cityofbowie.org](#); [jharrison@cityofbowie.org](#);  
[ron.watson@house.state.md.us](#); [marvin.holmes@house.state.md.us](#)  
**Subject:** Proposed Redistricting of Our Precinct from District 4 to District 6  
**Date:** Friday, July 30, 2021 3:47:43 PM

---

**CAUTION:** This email originated from an external email domain which carries the additional risk that it may be a phishing email and/or contain malware.

Dear Prince George's County Redistricting Commissioners:

My mother and I are residents and concerned citizens of Prince George's County, MD. Our interest in the Redistricting Commission's work is two-fold: (1) to ensure that our County is a model of political integrity in the redistricting process and (2) to ensure that the principle of keeping neighborhoods and cities together is upheld. As residents of Collington Station, which is located in the Incorporated City of Bowie, Maryland, we want to express our opposition to any plan for separating our neighborhood out of Council District 4, which represents all of Bowie, Maryland, to the Council District 6. We would like to remain in District 4 as it ensures our community of interest rests with our Bowie neighbors, follows the least change ideal, and preserves residential community of interest.

While we recognize these are preliminary data, we are concerned that when population data do show a range within the lawful deviations, efforts will be made to change numbers without concern for the people. Please be mindful that splitting numbers, whether statistical or empirical, does involve real people. We are a part of Prince George's County District 4, which represents Bowie, and would like to remain in District 4.

Sincerely,

Dr. Natasha H. Williams

Mrs. Helen R. Williams

402 Jennings Mill Drive, Bowie, MD 20721

**From:** [nurbiz@verizon.net](mailto:nurbiz@verizon.net)  
**To:** [Redistricting2021.commission](#); [Brown, Donna J.](#)  
**Cc:** [rndebumadu@cityofbowie.org](mailto:rndebumadu@cityofbowie.org); [Council District 4](#); [hgatessr@verizon.net](mailto:hgatessr@verizon.net); [janisaka1908@outlook.com](mailto:janisaka1908@outlook.com); [littlemurray9@verizon.net](mailto:littlemurray9@verizon.net)  
**Subject:** Proposed Redistricting of Our Precinct from District 4 to District 6  
**Date:** Friday, July 30, 2021 4:42:33 AM

---

**CAUTION:** This email originated from an external email domain which carries the additional risk that it may be a phishing email and/or contain malware.

Date: July 30, 2021

To: 2021 Prince George's County Redistricting Commissioners  
Prince George's County

From: Mrs. Terry Nuriddin  
Prince George's County District 4  
15201 Johnstone Lane  
Bowie, MD 20721

Re: Proposed Redistricting of Our Precinct from District 4 to District 6

I am a resident and concerned citizen of Prince George's County, MD. My interest in the Redistricting Commission's work is two-fold: (1) to ensure that our County is a model of political integrity in the redistricting process and (2) to ensure that the tenet of keeping neighborhoods and cities together is upheld.

As a resident of Collington Station, which is located in the Incorporated City of Bowie, Maryland, I want to express my opposition to any plan for separating my neighborhood out of the Councilmanic District 4 that represents all of Bowie, Maryland to the Councilmanic District 6.

My family would like to remain in District 4 as it ensures our community of interest rests with our Bowie neighbors and follows the least change ideal and the desire to preserve residential community of interest.

While we recognize these are preliminary data, we are concerned that when population data do show a range within the lawful deviations, efforts will be made to change numbers without concern for the people. Please be mindful that splitting numbers, whether statistical or empirical, does involve real people. And giving consideration to the human factor does not pose a violation to the US Constitution.

We are a part of PG County District 4, which represents Bowie and would like to remain so.

Date: July 30, 2021

To: 2021 Prince George's County Redistricting Commissioners  
Prince George's County

From: Jimmie Winston and Martha Winston  
Prince George's County District 4  
402 Jaystone Court  
Bowie, MD 20721

Re: Proposed Redistricting of Our Precinct from District 4 to District 6

We are residents and concerned citizens of Prince George's County, MD. Our interest in the Redistricting Commission's work is two-fold: (1) to ensure that our County is a model of political integrity in the redistricting process and (2) to ensure that the tenet of keeping neighborhoods and cities together is upheld.

As residents of Collington Station, which is located in the Incorporated City of Bowie, Maryland, we want to express our opposition to any plan for separating our neighborhood out of the Councilmanic District 4 that represents all of Bowie, Maryland to the Councilmanic District 6.

Our family would like to remain in District 4 as it ensures our community of interest rests with our Bowie neighbors and follows the least change ideal and the desire to preserve residential community of interest.

While we recognize these are preliminary data, we are concerned that when population data do show a range within the lawful deviations, efforts will be made to change numbers without concern for the people. Please be mindful that splitting numbers, whether statistical or empirical, does involve real people. And giving consideration to the human factor does not pose a violation to the US Constitution.

We are a part of PG County District 4, which represents Bowie and would like to remain so.



Date: July 30, 2021

To: 2021 Prince George's County Redistricting Commissioners  
Prince George's County

From: Emanuel Smith  
Prince George's County District 4  
15300 Johnstone Ln  
Bowie, MD 20721

Re: Proposed Redistricting of Our Precinct from District 4 to District 6

I am a resident and concerned citizen of Prince George's County, MD. I wish to express my opposition to any proposal to remove and realign Collington Station from District 4. Any action to do so would be totally disjointed. Collington Station has always been a part of Bowie, Maryland and Bowie as a whole has been a part of District 4. I don't understand why you would separate off a portion of Bowie and align it in a completely separate County District.

My family would like to remain in District 4 as it ensures our community of interest rests with our Bowie neighbors and follows the least change ideal and the desire to preserve residential community of interest.

Please bear in mind that the people in this community are more than just numbers. Consider that most of us are long time residents who chose to live here because we saw certain values and qualities present in living in Bowie. I've certainly never thought in my 20 plus years of mostly contented living here that there would be possible challenges in the form of redistricting our neighborhood. Please consider that there will be impact (I am concerned especially about the negative ones) that myself and other residents will experience with such a change. Just from a standpoint of unity there is one Bowie, and that should extend for purposes of all of Bowie remaining in one district, District 4.

Please, while you evaluate numbers, keep in mind communities, alliances, cities and people. We are talking about not separating what is a natural and rational fit for the residents of Collington Station.

We are a part of PG County District 4, which represents Bowie and would like to remain so.

Date: July 30, 2021

To: 2021 Prince George's County Redistricting Commissioners  
Prince George's County

From: **Joanne Davis**  
Prince George's County District 4  
**400 Jennings Mill Drive**  
Bowie, MD 20721

Re: Proposed Redistricting of Our Precinct from District 4 to District 6

I am a resident and concerned citizen of Prince George's County, MD. My interest in the Redistricting Commission's work is two-fold: (1) to ensure that our County is a model of political integrity in the redistricting process and (2) to ensure that the tenet of keeping neighborhoods and cities together is upheld.

As a resident of Collington Station, which is located in the Incorporated City of Bowie, Maryland, I want to express my opposition to any plan for separating my neighborhood out of the Councilmanic District 4 that represents all of Bowie, Maryland to the Councilmanic District 6.

I have been a resident of Bowie since the annexation in the 90's and I want to remain in District 4 as it ensures our community of interest rests with our Bowie neighbors and follows the least change ideal and the desire to preserve residential community of interest.

While we recognize these are preliminary data, we are concerned that when population data do show a range within the lawful deviations, efforts will be made to change numbers without concern for the people. Please be mindful that splitting numbers, whether statistical or empirical, does involve real people. And giving consideration to the human factor does not pose a violation to the US Constitution.

We are a part of PG County District 4, which represents Bowie and would like to remain so.

Respectfully,

Joanne Davis

Date: July 30, 2021

To: 2021 Prince George's County Redistricting Commissioners  
Prince George's County

From: **Paula McKenzie Wright**  
Prince George's County District 4  
**15305 Jennings Lane**  
Bowie, MD 20721

Re: Proposed Redistricting of Our Precinct from District 4 to District 6

I am a resident and concerned citizen of Prince George's County, MD. My interest in the Redistricting Commission's work is two-fold: (1) to ensure that our County is a model of political integrity in the redistricting process and (2) to ensure that the tenet of keeping neighborhoods and cities together is upheld.

As a resident of Collington Station, which is located in the Incorporated City of Bowie, Maryland, I want to express my opposition to any plan for separating my neighborhood out of the Councilmanic District 4 that represents all of Bowie, Maryland to the Councilmanic District 6.

My family would like to remain in District 4 as it ensures our community of interest rests with our Bowie neighbors and follows the least change ideal and the desire to preserve residential community of interest.

While we recognize these are preliminary data, we are concerned that when population data do show a range within the lawful deviations, efforts will be made to change numbers without concern for the people. Please be mindful that splitting numbers, whether statistical or empirical, does involve real people. And giving consideration to the human factor does not pose a violation to the US Constitution.

We are a part of PG County District 4, which represents Bowie and would like to remain so.

Thank you

**From:** [WW Email Address](#)  
**To:** [Redistricting2021.commission](#)  
**Cc:** [rndebumadu@cityofbowie.org](#); [iharrison@cityofbowie.org](#); [tadams@cityofbowie.org](#)  
**Subject:** Fwd: Who Started This?  
**Date:** Friday, July 30, 2021 7:04:55 PM

---

**CAUTION:** This email originated from an external email domain which carries the additional risk that it may be a phishing email and/or contain malware.

-----Original Message-----

From: WW Email Address <bil@verizon.net>  
To: Redistricting2021.commission@co.pg.md.us <Redistricting2021.commission@co.pg.md.us>  
Sent: Fri, Jul 30, 2021 6:56 pm  
Subject: Who Started This?

For the record, **who** initiated this idea and for what reason? I am pleased with the services and support that the citizens are receiving from the city of Bowie. This proposal seems so unnecessary for those of us who live in Collington Station.

Exactly what advantage this action will provide to the Collington community is **not** specifically clear, Who else benefits from this proposal that we don't know about?

Is this a tax and revenue shift to benefit other parties outside of Bowie? Politicians, county government officials, developers, influence peddlers involved? If so, who? (Names please.)

If I sound skeptical, I definitely am. I have talked to others inside and outside of Collington Station who have the same skepticism.

Sincerely,

William & Mildred Webb  
15314 Jennings Lane  
Bowie, Maryland 20721

**From:** [Cynthia Barnes](#)  
**To:** [Redistricting2021.commission](#); [Turner, Todd M.](#); [rndebumadu@citybowie.org](mailto:rndebumadu@citybowie.org); [tadams@citybowie.org](mailto:tadams@citybowie.org)  
**Subject:** COLLINGTON STATION REDISTRICTING CONCERN  
**Date:** Saturday, July 31, 2021 11:19:25 AM

---

**CAUTION:** This email originated from an external email domain which carries the additional risk that it may be a phishing email and/or contain malware.

Good Afternoon All

I have been a resident of the city of Bowie for over 25 years and have enjoyed the service and support that has come with that. As you receive the many emails regarding this very important issue, I want you to know that there are many that won't respond or may not respond in a timely manner. However, we all voice the same concern with redistricting us. We have been paying high tax dollars to protect our property values and schools' districts and don't deserve to be moved to a worst situation. it's not hard to understand the situation, imagine living in a multimillion-dollar community in Potomac Maryland and being told that we moving your district to a lower-class district in the area. Secondly you just happen to live in the community. We strongly oppose this attempt and ask that we get your full support to stop this action.

We Thank You ahead of time for all actions that you provide to help us defeat this redistricting attempt.

Sincerely,

Very Concerned Resident

**From:** [Reginald Gwira](#)  
**To:** [Redistricting2021.commission](#)  
**Cc:** [rndebumadu@cityofbowie.org](#); [jharrison@cityofbowie.org](#); [tadams@cityofbowie.org](#)  
**Subject:** Proposed Redistricting of Our Precinct from District 4 to District 6  
**Date:** Saturday, July 31, 2021 11:16:58 AM

---

**CAUTION:** This email originated from an external email domain which carries the additional risk that it may be a phishing email and/or contain malware.

Date: July 30, 2021

To: 2021 Prince George's County Redistricting Commissioners  
Prince George's County

From: **Reggie & Trish Gwira**  
Prince George's County District 4  
**15112 Jenkins Ridge Road**  
Bowie, MD 20721

Re: Proposed Redistricting of Our Precinct from District 4 to District 6

I am a resident and concerned citizen of Prince George's County, MD. My interest in the Redistricting Commission's work is two-fold: (1) to ensure that our County is a model of political integrity in the redistricting process and (2) to ensure that the tenet of keeping neighborhoods and cities together is upheld.

As a resident of Collington Station, which is located in the Incorporated City of Bowie, Maryland, I want to express my opposition to any plan for separating my neighborhood out of the Councilmanic District 4 that represents all of Bowie, Maryland to the Councilmanic District 6.

My family would like to remain in District 4 as it ensures our community of interest rests with our Bowie neighbors and follows the least change ideal and the desire to preserve residential community of interest.

While we recognize these are preliminary data, we are concerned that when population data do show a range within the lawful deviations, efforts will be made to change numbers without concern for the people. Please be mindful that splitting numbers, whether statistical or empirical, does involve real people. And giving consideration to the human factor does not pose a violation to the US Constitution.

We are a part of PG County District 4, which represents Bowie and would like to remain so.

Date: 30 July 2021

To: 2021 Prince George's County Redistricting Commissioners  
Prince George's County

From: Dr. and Mrs. Sherman A. Malone  
Prince George's County District 4  
15300 Jodphur Dr  
Bowie, Maryland 20721

Subject: Proposed Precinct Redistricting of Collington Station from District 4 to District 6

As a resident and concerned citizen of Prince George's County, Maryland. My interest in the Redistricting Commission's work is two-fold: (1) to ensure our Prince George's County is a model of political integrity in the redistricting process and (2) to ensure the tenet of keeping neighborhoods and cities properly aligned.

Noting there has been some preliminary statistical population data assessments, as a resident of Collington Station located in the City of Bowie Maryland I would like to express my opposition to any proposed plan to remove my neighborhood from Bowie Maryland (Councilmanic District 4) as District 4 is postured to ensure we receive the best political guidance and infrastructure support structure for our community at large.

Sincerely,

//SIGNED//

Dr. and Mrs. Sherman A. Malone

Date: July 30, 2021

To: 2021 Prince George's County Redistricting Commissioners  
Prince George's County

From: Joan C. Walker  
Prince George's County District 4  
100 Jewett Place  
Bowie, MD 20721

Re: Proposed Redistricting of Our Precinct from District 4 to District 6

I am a resident and concerned citizen of Prince George's County, MD. My interest in the Redistricting Commission's work is two-fold: (1) to ensure that our County is a model of political integrity in the redistricting process and (2) to ensure that the tenet of keeping neighborhoods and cities together is upheld.

As a resident of Collington Station, which is located in the Incorporated City of Bowie, Maryland, I want to express my opposition to any plan for separating my neighborhood out of the Councilmanic District 4 that represents all of Bowie, Maryland to the Councilmanic District 6.

My family would like to remain in District 4 as it ensures our community of interest rests with our Bowie neighbors and follows the least change ideal and the desire to preserve residential community of interest.

While we recognize these are preliminary data, we are concerned that when population data do show a range within the lawful deviations, efforts will be made to change numbers without concern for the people. Please be mindful that splitting numbers, whether statistical or empirical, does involve real people. And giving consideration to the human factor does not pose a violation to the US Constitution.

We are a part of PG County District 4, which represents Bowie and would like to remain so.

**DO NOT REDISTRICT COLLINGTON STATION TO DISTRICT 6 !!!!!!!!!!!!!!!!!!!!!!!**

Sincerely

Joan C. Walker



Date: July 30, 2021

To: 2021 Prince George's County Redistricting Commissioners  
Prince George's County

From: George C. & Jacqueline E. Macon  
Prince George's County District 4  
**14906 Jenkins Ridge Rd.**  
Bowie, MD 20721

Re: Proposed Redistricting of Our Precinct from District 4 to District 6

I am a resident and concerned citizen of Prince George's County, MD. My interest in the Redistricting Commission's work is two-fold: (1) to ensure that our County is a model of political integrity in the redistricting process and (2) to ensure that the tenet of keeping neighborhoods and cities together is upheld.

As a resident of Collington Station, which is located in the Incorporated City of Bowie, Maryland, I want to express my opposition to any plan for separating my neighborhood out of the Councilmanic District 4 that represents all of Bowie, Maryland to the Councilmanic District 6.

My family would like to remain in District 4 as it ensures our community of interest rests with our Bowie neighbors and follows the least change ideal and the desire to preserve residential community of interest.

While we recognize these are preliminary data, we are concerned that when population data do show a range within the lawful deviations, efforts will be made to change numbers without concern for the people. Please be mindful that splitting numbers, whether statistical or empirical, does involve real people. And giving consideration to the human factor does not pose a violation to the US Constitution.

We are a part of PG County District 4, which represents Bowie and would like to remain so.

We thank you and appreciate your consideration in handling this matter as requested.

Respectfully,

George C. & Jacqueline E. Macon

**From:** [Walter Hall](#)  
**To:** [Redistricting2021.commission](#)  
**Cc:** [Alfreda Hall](#); [rndebumadu@cityofbowie.org](mailto:rndebumadu@cityofbowie.org); [iharrison@cityofbowie.org](mailto:iharrison@cityofbowie.org); [tadams@cityofbowie.org](mailto:tadams@cityofbowie.org); [ron.watson@house.state.md.us](mailto:ron.watson@house.state.md.us); [Marvin Holmes](#)  
**Subject:** Collington Station - Prince George's County Redistricting  
**Date:** Sunday, August 1, 2021 5:27:07 PM

---

**CAUTION:** This email originated from an external email domain which carries the additional risk that it may be a phishing email and/or contain malware.

Date: July 30, 2021

To: 2021 Prince George's County Redistricting Commissioners  
Prince George's County

From: Walter and Alfreda Hall  
Prince George's County District 4  
15406 Jodphur Drive  
Bowie, MD 20721

Re: Proposed Redistricting of Our Precinct from District 4 to District 6

I am a resident and concerned citizen of Prince George's County, MD. My interest in the Redistricting Commission's work is two-fold: (1) to ensure that our County is a model of political integrity in the redistricting process and (2) to ensure that the tenet of keeping neighborhoods and cities together is upheld.

As a resident of Collington Station, which is located in the Incorporated City of Bowie, Maryland, I want to express my opposition to any plan for separating my neighborhood out of the Councilmanic District 4 that represents all of Bowie, Maryland to the Councilmanic District 6.

My family would like to remain in District 4 as it ensures our community of interest rests with our Bowie neighbors and follows the least change ideal and the desire to preserve residential community of interest.

While we recognize these are preliminary data, we are concerned that when population data do show a range within the lawful deviations, efforts will be made to change numbers without concern for the people. Please be mindful that splitting numbers, whether statistical or empirical, does involve real people. And giving consideration to the human factor does not pose a violation to the US Constitution.

We are a part of PG County District 4, which represents Bowie and would like to remain so.

v/r  
Walter and Alfreda Hall

Date: August 1, 2021

To: 2021 Prince George's County Redistricting Commissioners  
Prince George's County

From: **Louise Johnson-Hartwell**  
Prince George's County District 4  
**15308 Johnstone Lane**  
Bowie, MD 20721

Re: Proposed Redistricting of Our Precinct from District 4 to District 6

I am a resident and concerned citizen of Prince George's County, MD. My interest in the Redistricting Commission's work is two-fold: (1) to ensure that our County is a model of political integrity in the redistricting process and (2) to ensure that the tenet of keeping neighborhoods and cities together is upheld.

As a resident of Collington Station, which is located in the Incorporated City of Bowie, Maryland, I want to express my opposition to any plan for separating my neighborhood out of the Councilmanic District 4 that represents all of Bowie, Maryland to the Councilmanic District 6.

My family would like to remain in District 4 as it ensures our community of interest rests with our Bowie neighbors and follows the least change ideal and the desire to preserve residential community of interest.

While we recognize these are preliminary data, we are concerned that when population data do show a range within the lawful deviations, efforts will be made to change numbers without concern for the people. Please be mindful that splitting numbers, whether statistical or empirical, does involve real people. And giving consideration to the human factor does not pose a violation to the US Constitution.

We are a part of PG County District 4, which represents Bowie and would like to remain so.

Thank you

Louise Johnson-Hartwell

**From:** [Windham, Sharon](#)  
**To:** [Redistricting2021.commission](#)  
**Cc:** [rndebumadu@cityofbowie.org](#); [jharrison@cityofbowie.org](#); [tadams@cityofbowie.org](#)  
**Subject:** Proposed Redistricting of District 4 to District 6  
**Date:** Sunday, August 1, 2021 4:28:59 PM  
**Attachments:** [image001.png](#)

---

**CAUTION:** This email originated from an external email domain which carries the additional risk that it may be a phishing email and/or contain malware.

Date: July 30, 2021

To: 2021 Prince George's County Redistricting Commissioners  
Prince George's County

From: **Ronald Windham**  
Prince George's County District 4  
**201 Johnsberg Lane**  
Bowie, MD 20721

Re: Proposed Redistricting of Our Precinct from District 4 to District 6

I am a resident and concerned citizen of Prince George's County, MD. My interest in the Redistricting Commission's work is two-fold: (1) to ensure that our County is a model of political integrity in the redistricting process and (2) to ensure that the tenet of keeping neighborhoods and cities together is upheld.

As a resident of Collington Station, which is located in the Incorporated City of Bowie, Maryland, I want to express my opposition to any plan for separating my neighborhood out of the Councilmanic District 4 that represents all of Bowie, Maryland to the Councilmanic District 6.

My family would like to remain in District 4 as it ensures our community of interest rests with our Bowie neighbors and follows the least change ideal and the desire to preserve residential community of interest.

While we recognize these are preliminary data, we are concerned that when population data do show a range within the lawful deviations, efforts will be made to change numbers without concern for the people. Please be mindful that splitting numbers, whether statistical or empirical, does involve real people. And giving consideration to the human factor does not pose a violation to the US Constitution.

We are a part of PG County District 4, which represents Bowie and would like to remain so.

Sincerely,

Ronald Windham



Wind

Sharon Windham

Office of Human Resources - Training and Development  
8930 Stanford Blvd, Columbia MD 21045  
410 313 6051

**From:** [Carolyn Murray](#)  
**To:** [Redistricting2021.commission](#)  
**Cc:** [rndebumadu@cityofbowie.org](#); [jharrison@cityofbowie.org](#); [marvin.holmes@house.state.md.us](#); [ron.watson@house.state.md.us](#)  
**Subject:** Redistricting 2021  
**Date:** Sunday, August 1, 2021 3:42:40 PM

---

**CAUTION:** This email originated from an external email domain which carries the additional risk that it may be a phishing email and/or contain malware.

Date: July 30, 2021

To: 2021 Prince George's County Redistricting Commissioners  
Prince George's County

From: Carolyn E. Murray  
Prince George's County District 4  
15108 Joppa Place  
Bowie, MD 20721

Re: Proposed Redistricting of Our Precinct from District 4 to District 6

Sirs:

I am a resident and concerned citizen of Prince George's County, MD. My interest in the Redistricting Commission's work is two-fold: (1) to ensure that our County is a model of political integrity in the redistricting process and (2) to ensure that the tenant keeps neighborhoods and cities together.

As a resident of Collington Station, located in the Incorporated City of Bowie, Maryland, I want to express my opposition to any plan for separating my neighborhood from the Councilmanic District 4 that represents all of Bowie, Maryland, to the Councilmanic District 6.

My family would like to remain in District 4. Staying in District 4 ensures our community of interest rests with our Bowie neighbors and follows the slightest change ideal and the desire to preserve a residential neighborhood of interest. I grew up in Washington, D. C. I saw and lived the life of paying taxes in one place and then having legislators from somewhere else determine what happens where you live. This arrangement does not foster commadore and encourages dissent. My family asks that you consider the people who must live with your legislative decisions before finalizing this legislation.

While we recognize these are preliminary data, we are concerned that when population data do show a range within the lawful deviations, officials will change numbers without concern for the people. Please be mindful that splitting numbers, whether statistical or empirical, does involve real people. And considering the human factor does not pose a violation of the US Constitution. We are a part of PG County District 4, representing Bowie, and would like to remain.

**From:** [Valerie Anderson](#)  
**To:** [Redistricting2021.commission](#)  
**Cc:** [mdebumadu@cityofbowie.org](#); [jharrison@cityofbowie.org](#); [tadams@cityofbowie.org](#); [ron.watson@house.state.md.us](#); [marvin.homes@house.state.md.us](#)  
**Subject:** Redistricting 2021  
**Date:** Sunday, August 1, 2021 7:59:44 PM

---

**CAUTION:** This email originated from an external email domain which carries the additional risk that it may be a phishing email and/or contain malware.

Date: August 1, 2021

To: 2021 Prince George's County Redistricting Commissioners  
Prince George's County

From: Clemia and Valerie Anderson, Jr.  
Prince George's County District 4  
15106 Joppa Place  
Bowie, MD 20721

Re: Proposed Redistricting of Our Precinct from District 4 to District 6

To all concerned:

I am a resident and concerned citizen of Prince George's County, MD. My interest in the Redistricting Commission's work is two-fold: (1) to ensure that our County is a model of political integrity in the redistricting process and (2) to ensure that the tenant upholds keeping neighborhoods and cities together.

As a resident of Collington Station, located in the Incorporated City of Bowie, Maryland, I want to express my opposition to any plan for separating my neighborhood from the Councilmanic District 4 that represents all of Bowie, Maryland to the Councilmanic District 6.

My family would like to remain in District 4. We have been residents of Collington Station

for thirteen years, settling here while I served on active duty in the United States Navy. We have lived in various cities throughout this country and found Collington Station an appealing community within the Bowie, Maryland, area. Remaining in District 4 ensures our community of interest rests with our Bowie neighbors and follows the slightest change ideal and the desire to preserve a residential community of interest.

While we recognize these are preliminary data, we are concerned that when population data does show a range within the lawful deviations, officials with vague knowledge of our desires will change numbers without concern for the people. Please be mindful that splitting numbers, whether statistical or empirical, does involve and affect real people, and considering the human factor does not pose a violation of the U. S. Constitution. We are a part of Prince George's County District 4, representing Bowie, and would like to remain within this district.



**From:** [Julius Copeland](#)  
**To:** [Redistricting2021.commission](#); [Clerk of the Council](#)  
**Cc:** [Turner, Todd M.](#); [iharrison@cityofbowie.org](#); [tadams@cityofbowie.org](#); [rndeumadu@cityofbowie.org](#)  
**Subject:** Redistricting  
**Date:** Sunday, August 1, 2021 3:17:12 PM

---

CAUTION: This email originated from an external email domain which carries the additional risk that it may be a phishing email and/or contain malware.

Redistricting Committee 2021,

I am a concerned resident that lives in Collington Station section of the City of Bowie, MD. I recently was made aware of an effort to redistrict my subdivision from my current legislative district in Bowie to a legislative district that aligns with an area that is outside of my immediate community common interest. This proposal appears too short sighted with the best interest of my subdivision. As a tax paying resident of the city of Bowie, Md, why should I pay city taxes and be represented by a legislator that may not represent me in the same manner as the legislator that represents the majority of the city of Bowie.

I recall a few years back when my subdivision was aligned with the rest the the City of Bowie in the same Prince George County Council District. That alignment was a great idea. We, who live in Bowie and pay a city tax all have a common interest in our community. To change my subdivision out of our current legislative district is a bad idea for many reasons.

If any one moves in the 20721 zip code area of Bowie, MD, you should consider moving those subdivisions that voted against being annexed into the City of Bowie. I am a 30 year resident of Collington Station and have been a tax paying resident of the City of Bowie since annexed about 28 years ago.

My long time Collington Station neighbors and I have worked with our elected and community leaders to have the community that we have today. I ask that you help us to maintain what we have worked so hard to obtain by retaining Collington Station in it's current legislative district that fully place us in the same district as the rest of the City of Bowie.

Sincerely,  
Julius & Tanya Copeland  
15402 Jennings Lane  
Bowie, MD 20721

Sent from my iPad

Date: July 30, 2021

To: 2021 Prince George's County Redistricting Commissioners  
Prince George's County

From: Kyra Dolison  
Prince George's County District 4  
15102 Johnstone Ln.  
Bowie, MD 20721

Re: Proposed Redistricting of Our Precinct from District 4 to District 6

I am a resident and concerned citizen of Prince George's County, MD. My interest in the Redistricting Commission's work is two-fold: (1) to ensure that our County is a model of political integrity in the redistricting process and (2) to ensure that the tenet of keeping neighborhoods and cities together is upheld.

As a resident of Collington Station, which is located in the Incorporated City of Bowie, Maryland, I want to express my opposition to any plan for separating my neighborhood out of the Councilmanic District 4 that represents all of Bowie, Maryland to the Councilmanic District 6.

My family would like to remain in District 4 as it ensures our community of interest rests with our Bowie neighbors and follows the least change ideal and the desire to preserve residential community of interest.

While we recognize these are preliminary data, we are concerned that when population data do show a range within the lawful deviations, efforts will be made to change numbers without concern for the people. Please be mindful that splitting numbers, whether statistical or empirical, does involve real people. And giving consideration to the human factor does not pose a violation to the US Constitution.

We are a part of PG County District 4, which represents Bowie and would like to remain so.

**From:** [margree@aol.com](mailto:margree@aol.com)  
**To:** [Redistricting2021.commission](mailto:Redistricting2021.commission)  
**Subject:** Proposed Redistricting of our Precinct from District 4 to District 6  
**Date:** Monday, August 2, 2021 9:51:16 AM

---

**CAUTION:** This email originated from an external email domain which carries the additional risk that it may be a phishing email and/or contain malware.

Date: July 30, 2021

To: 2021 Prince George's County Redistricting Commissioners Prince George's County

From: Inez Sadler  
Prince George's County District 4  
103 Jewett Place  
Bowie, MD 20721

Re: Proposed Redistricting of Our Precinct from District 4 to District 6

I am a resident and concerned citizen of Prince George's County, MD. My interest in the Redistricting Commission's work is two-fold: (1) to ensure that our County is a model of political integrity in the redistricting process and (2) to ensure that the tenant of keeping neighborhoods and cities together is upheld.

As a resident of Collington Station, which is located in the Incorporated City of Bowie, Maryland, I want to express my opposition to any plan for separating my neighborhood out of the Councilmanic District 4 that represents all of Bowie, Maryland to the Councilmanic District 6.

My family would like to remain in District 4 as it ensures our community of interest rests with our Bowie neighbors and follows the least change ideal and the desire to preserve residential community of interest.

While we recognize these are preliminary data, we are concerned that when population data do show a range within the lawful deviations, efforts will be made to change numbers without concern for the people. Please be mindful that splitting numbers, whether statistical or empirical, does involve real people. And giving consideration to the human factor does not pose a violation to the US Constitution.

We are a part of PG County District 4, which represents Bowie and would like to remain so.

Sincerely,  
Inez Sadler

103 Jewett Place  
Bowie, Md 20721

**From:** [wellsan@aol.com](mailto:wellsan@aol.com)  
**To:** [Redistricting2021.commission](http://Redistricting2021.commission)  
**Subject:** Proposed Redistricting of Our Precinct from District 4 to District 6  
**Date:** Monday, August 2, 2021 10:09:41 AM

---

**CAUTION:** This email originated from an external email domain which carries the additional risk that it may be a phishing email and/or contain malware.

Date: July 30, 2021

To: 2021 Prince George's County Redistricting Commissioners Prince George's County

From: wellington Sadler  
Prince George's County District 4 103 Jewett Place  
Bowie, MD 20721

Re: Proposed Redistricting of Our Precinct from District 4 to District 6

I am a resident and concerned citizen of Prince George's County, MD. My interest in the Redistricting Commission's work is two-fold: (1) to ensure that our County is a model of political integrity in the redistricting process and (2) to ensure that the tenant of keeping neighborhoods and cities together is upheld.

As a resident of Collington Station, which is located in the Incorporated City of Bowie, Maryland, I want to express my opposition to any plan for separating my neighborhood out of the Councilmanic District 4 that represents all of Bowie, Maryland to the Councilmanic District 6.

My family would like to remain in District 4 as it ensures our community of interest rests with our Bowie neighbors and follows the least change ideal and the desire to preserve residential community of interest.

While we recognize these are preliminary data, we are concerned that when population data do show a range within the lawful deviations, efforts will be made to change numbers without concern for the people. Please be mindful that splitting numbers, whether statistical or empirical, does involve real people. And giving consideration to the human factor does not pose a violation to the US Constitution.

We are a part of PG County District 4, which represents Bowie and would like to remain so.

Sincerely,  
Wellington Sadler

103 Jewett Place  
Bowie, Md 20721

**From:** [Kari Fisher](#)  
**To:** [Redistricting2021.commission](#)  
**Cc:** [blwomcommunity@gmail.com](#)  
**Subject:** Redistricting Comments for 2021 Hearings  
**Date:** Monday, August 2, 2021 4:50:16 PM

---

**CAUTION:** This email originated from an external email domain which carries the additional risk that it may be a phishing email and/or contain malware.

- District 2 apparently had the worst census return in Prince George's County, and in anticipation of that, the government made plans to provide additional support in areas like District 2 in part because of the large immigrant population to try to ensure as many people as possible filled out the census. However, CV-19 disrupted those efforts. I heard participation may have reached 60%, if that, in District 2.
- While other areas in PGC may be shrinking, the Adelphi/College Park area, especially in or abutting District 2, is sharply increasing in population, whether or not that is accurately reflected in the latest census estimates or numbers. Despite no new housing in the area, the schools in the Adelphi area are way overcapacity.
- Approximate dates: 2012, 47B is created to serve the area's hispanic population. There are close elections in the area in 2014 for County Council District 2 and District 3 on the School Board. There has been publicly known corruption in the area with certain elected official(s) previously. In 2018, the School Board for Buck Lodge/White Oak Manor/etc. Schools in County District 1, Buck Lodge Middle School and Cherokee Lane Elementary School, serving both College Park and Adelphi, were moved from District 1 to District 3 in PGCPs Board of Education. District 2 County Council has been pushing for several years to build schools in District 1 to serve District 2 communities, against the community's will because new development in WOM/BL is completely inappropriate under the circumstances. PGCPs, et. al., have very questionably, if not also unlawfully and unethically, purchased a Build-A-Box School from Pennsylvania (a reinforced trailer essentially) into Buck Lodge/White Oak Manor in District 1 to stuff inappropriately, etc. into the neighborhood.

[Article regarding the Build-A-Box School but the community was not kept in the loop, nor does it want the school.]

[https://www.thesentinel.com/communities/prince\\_george/news/education/cherokee-lane-elementary-school-renovation-is-in-the-works/article\\_c9cb4e98-858a-5378-9474-5e6dc623bc5b.html](https://www.thesentinel.com/communities/prince_george/news/education/cherokee-lane-elementary-school-renovation-is-in-the-works/article_c9cb4e98-858a-5378-9474-5e6dc623bc5b.html)

- The Build-A-Box School is the first public school facility of its kind in the State of Maryland, which PGCPs, politicians, etc. intentionally purchased (as opposed to building) to circumvent normal development procedures, including zoning, community engagement, environmental restrictions, etc., and did stealthily so as to not be stopped by the local community. The Build-A-Box School, planned to be located in the same neighborhood that is now potentially to be moved to District 2 in PGC through redistricting, and will destroy natural environmental habitats, exacerbate flooding, including sewage back-ups in people's homes, etc., increase traffic, make hazardous conditions worse for students with no infrastructure (sidewalks, means of egress/ingress), putting 5000+ students in the same area plus staff where there are now approx. 1200 students.
- If the population numbers are below/above the standard deviation, up to 5%, the Commission is not legally required to move populations from one district to another. While District 2 is expected to be 4% under the average, these numbers are difficult to believe given the fast growth in Adelphi and abutting neighborhoods. Before any decisions are made to move a segment from District 1 to District 2, the population numbers need to be verified as accurate in District 2.
- Decisions made need to be considered for disparate impact/treatment on certain protected classes. Shifting certain protected classes into 1 voting district, state or county, in effect dilutes representation once a majority has been reached, for example.

PGCPs, et. al., needs to place the Build-A-Box School in another area that doesn't have wetlands, flood plains, etc. for many reasons. I am reminded that not only do we need to protect our own homes and communities from this reckless, corrupt Build-A-Box plan by PGCPs, et. al., that intentionally circumvents zoning, environmental and sustainability plans and Green initiatives (including putting more buses on the ground and long-term environmental and economic costs), notice and comment periods, community engagement and input, education models that work, equality/equity principles, protections for the most vulnerable from increases truancy/reduces access to free and reduce meals, property rights (quiet use and enjoyment, values, traffic, security, etc.), but we need to protect the environment

(biodiversity, ecosystems, etc.) within our communities. PGCPs, et. al., is aware of the highly inappropriate actions to stuff the Build-A-Box School in Buck Lodge, and when confronted should have been immediately looking for an alternative location to stick it, if they cannot sell it, etc. and/or are stuck with the structure, and District 2 in PGC has been leading the way in these efforts adversely impacting the communities in District 1, BL/WOM, not the subject of a potential forced move into District 2 through redistricting.

"Educational institutions have a responsibility to protect every student's right to learn in a safe environment free from unlawful discrimination and to prevent unjust deprivations of that right. The Office for Civil Rights enforces several Federal civil rights laws that prohibit discrimination in programs or activities that receive federal financial assistance from the Department of Education. It is the mission of the Office for Civil Rights is to ensure equal access to education and to promote educational excellence throughout the nation through vigorous enforcement of civil rights. Discrimination on the basis of race, color, and national origin is prohibited by Title VI of the Civil Rights Act of 1964. This includes discrimination based on a person's limited English proficiency or English learner status; and actual or perceived shared ancestry or ethnic characteristics, including membership in a religion that may be perceived to exhibit such characteristics (such as Hindu, Jewish, Muslim, and Sikh individuals)." <https://www2.ed.gov/about/offices/list/ocr/docs/howto.html>

**From:** [rudy blyden](#)  
**To:** [Redistricting2021.commission](#)  
**Cc:** [rndebumadu@cityofbowie.org](#); [jharrison@cityofbowie.org](#); [tadams@cityofbowie.org](#); [ron.watson@house.state.md.us](#); [marvin.holmes@house.state.md.us](#)  
**Subject:** Redistricting  
**Date:** Monday, August 2, 2021 3:09:25 PM

---

**CAUTION:** This email originated from an external email domain which carries the additional risk that it may be a phishing email and/or contain malware.

Date: July 30, 2021

To: 2021 Prince George's County Redistricting Commissioners  
Prince George's County

From: Rudolph Blyden  
Prince George's County District 4  
802 Johnson Grove Lane  
Bowie, MD 20721

Re: Proposed Redistricting of Our Precinct from District 4 to District 6

I am a resident and concerned citizen of Prince George's County, MD. My interest in the Redistricting Commission's work is two-fold: (1) to ensure that our County is a model of political integrity in the redistricting process and (2) to ensure that the tenet of keeping neighborhoods and cities together is upheld.

As a resident of Collington Station, which is located in the Incorporated City of Bowie, Maryland, I want to express my opposition to any plan for separating my neighborhood out of the Councilmanic District 4 that represents all of Bowie, Maryland to the Councilmanic District 6.

My family would like to remain in District 4 as it ensures our community of interest rests with our Bowie neighbors and follows the least change ideal and the desire to preserve residential community of interest.

While we recognize these are preliminary data, we are concerned that when population data do show a range within the lawful deviations, efforts will be made to change numbers without concern for the people. Please be mindful that splitting numbers, whether statistical or empirical, does involve real people. And giving consideration to the human factor does not pose a violation to the US Constitution.

We are a part of PG County District 4, which represents Bowie and would like to remain so.



Date: August 2, 2021

To: 2021 Prince George's County Redistricting Commissioners  
Prince George's County

From: **Mr. and Mrs. Emmanuel Atoyebi**  
Prince George's County District 4  
**401 Jeanwood Court**  
Bowie, MD 20721

Re: Proposed Redistricting of Our Precinct from District 4 to District 6

I am a resident and concerned citizen of Prince George's County, MD. My interest in the Redistricting Commission's work is two-fold: (1) to ensure that our County is a model of political integrity in the redistricting process and (2) to ensure that the tenet of keeping neighborhoods and cities together is upheld.

As a resident of Collington Station, which is located in the Incorporated City of Bowie, Maryland, I want to express my opposition to any plan for separating my neighborhood out of the Councilmanic District 4 that represents all of Bowie, Maryland to the Councilmanic District 6.

My family would like to remain in District 4 as it ensures our community of interest rests with our Bowie neighbors and follows the least change ideal and the desire to preserve residential community of interest.

While we recognize these are preliminary data, we are concerned that when population data do show a range within the lawful deviations, efforts will be made to change numbers without concern for the people. Please be mindful that splitting numbers, whether statistical or empirical, does involve real people. And giving consideration to the human factor does not pose a violation to the US Constitution. We are a part of PG County District 4, which represents Bowie and would like to remain so.

Respectfully,

Vanessa and Emmanuel Atoyebi

**From:** [Joe Mensah](#)  
**To:** [Redistricting2021.commission](#); [Clerk of the Council](#)  
**Cc:** [Turner, Todd M.](#); [rndebumadu@cityofbowie.org](mailto:rndebumadu@cityofbowie.org); [iharrison@cityofbowie.org](mailto:iharrison@cityofbowie.org); [tadams@cityofbowie.org](mailto:tadams@cityofbowie.org)  
**Subject:** Prince Georges County Redistricting  
**Date:** Monday, August 2, 2021 9:35:12 PM

---

**CAUTION:** This email originated from an external email domain which carries the additional risk that it may be a phishing email and/or contain malware.

Joe & Grace Mensah  
505 Jasper Court  
Collington Station  
Bowie, MD 20721-7221

### Prince Georges County Redistricting

The both of us want to register our opposition to redistricting our neighborhood from District 4 to District 6.  
We implore you to use your office to prevent this from happening.  
Thanks.

Grace and Joe Mensah

*Joe Mensah*

3018142252

Thy word have I hid in my heart, that I might not sin against thee.

**From:** [Jacqueline Davis](#)  
**To:** [Redistricting2021.commission](#)  
**Cc:** [rndebumadu@cityofbowie.org](mailto:rndebumadu@cityofbowie.org); [tadams@cityofbowie.org](mailto:tadams@cityofbowie.org); [marvin.holmes@house.state.md.us](mailto:marvin.holmes@house.state.md.us)  
**Subject:** Proposed Redistricting of Our Precinct from District 4 to District 6  
**Date:** Monday, August 2, 2021 8:07:21 PM

---

**CAUTION:** This email originated from an external email domain which carries the additional risk that it may be a phishing email and/or contain malware.

Date: August 2, 2021

To: 2021 Prince George's County Redistricting Commissioners  
Prince George's County

From: Dwayne & Jacqueline Davis  
Prince George's County District 4  
605 Jarvis Crest Ct, Bowie, MD 20721  
Bowie, MD 20721

Re: Proposed Redistricting of Our Precinct from District 4 to District 6

I am a resident and concerned citizen of Prince George's County, MD. My interest in the Redistricting Commission's work is two-fold: (1) to ensure that our County is a model of political integrity in the redistricting process and (2) to ensure that the tenet of keeping neighborhoods and cities together is upheld.

As a resident of Collington Station, which is located in the Incorporated City of Bowie, Maryland, I want to express my opposition to any plan for separating my neighborhood out of the Councilmanic District 4 that represents all of Bowie, Maryland to the Councilmanic District 6.

My family would like to remain in District 4 as it ensures our community of interest rests with our Bowie neighbors and follows the least change ideal and the desire to preserve a residential community of interest.

While we recognize these are preliminary data, we are concerned that when population data do show a range within the lawful deviations, efforts will be made to change numbers without concern for the people. Please be mindful that splitting numbers, whether statistical or empirical, does involve real people. And giving consideration to the human factor does not pose a violation of the US Constitution.

We are a part of PG County District 4, which represents Bowie and would like to remain so.

Sincerely,

Dwayne & Jacqueline Davis  
[jkdavis218@gmail.com](mailto:jkdavis218@gmail.com)  
301-873-4743

**From:** [kokaman@verizon.net](mailto:kokaman@verizon.net)  
**To:** [Redistricting2021.commission](http://Redistricting2021.commission)  
**Subject:** Redistricting from District 4 to District 6  
**Date:** Monday, August 2, 2021 8:47:18 PM

---

**CAUTION:** This email originated from an external email domain which carries the additional risk that it may be a phishing email and/or contain malware.

Date: July 30, 2021

To: 2021 Prince George's County Redistricting Commissioners  
Prince George's County

From: **Woodrow and Karen McCutchen**  
Prince George's County District 4  
**203 Johnsberg Lane**  
Bowie, MD 20721

Re: Proposed Redistricting of Our Precinct from District 4 to District 6

I am a resident and concerned citizen of Prince George's County, MD. My interest in the Redistricting Commission's work is two-fold: (1) to ensure that our County is a model of political integrity in the redistricting process and (2) to ensure that the tenet of keeping neighborhoods and cities together is upheld.

As a resident of Collington Station, which is located in the Incorporated City of Bowie, Maryland, I want to express my opposition to any plan for separating my neighborhood out of the Councilmanic District 4 that represents all of Bowie, Maryland to the Councilmanic District 6.

My family would like to remain in District 4 as it ensures our community of interest rests with our Bowie neighbors and follows the least change ideal and the desire to preserve residential community of interest.

While we recognize these are preliminary data, we are concerned that when population data do show a range within the lawful deviations, efforts will be made to change numbers without concern for the people. Please be mindful that splitting numbers, whether statistical or empirical, does involve real people. And giving consideration to the human factor does not pose a violation to the US Constitution.

We are a part of PG County District 4, which represents Bowie and would like to remain so.

Thanks

Woody McCutchen

Date: July 30, 2021

To: 2021 Prince George's County Redistricting Commissioners  
Prince George's County

From: Sherri M Blair  
Prince George's County District 4  
15212 Jenkins Ridge Rd  
Bowie, MD 20721

Re: Proposed Redistricting of Our Precinct from District 4 to District 6

I am a resident and concerned citizen of Prince George's County, MD. My interest in the Redistricting Commission's work is two-fold: (1) to ensure that our County is a model of political integrity in the redistricting process and (2) to ensure that the tenet of keeping neighborhoods and cities together is upheld.

As a resident of Collington Station, which is located in the Incorporated City of Bowie, Maryland, I want to express my opposition to any plan for separating my neighborhood out of the Councilmanic District 4 that represents all of Bowie, Maryland to the Councilmanic District 6.

My family would like to remain in District 4 as it ensures our community of interest rests with our Bowie neighbors and follows the least change ideal and the desire to preserve residential community of interest.

While we recognize these are preliminary data, we are concerned that when population data do show a range within the lawful deviations, efforts will be made to change numbers without concern for the people. Please be mindful that splitting numbers, whether statistical or empirical, does involve real people. And giving consideration to the human factor does not pose a violation to the US Constitution.

We are a part of PG County District 4, which represents Bowie and would like to remain so.

Respectfully,

S Blair

Date: August 2, 2021

To: 2021 Prince George's County Redistricting Commissioners  
Prince George's County

From: Elise Enty Johnson  
Prince George's County District 4  
503 Jones Fall Court  
Bowie, MD 20721

Re: Proposed Redistricting of Our Precinct from District 4 to District 6

I am a homeowner and concerned citizen residing in Prince George's County, MD. My interest in the Redistricting Commission's work is two-fold: (1) to ensure that our County is a model of political integrity in the redistricting process and (2) to ensure that the tenet of keeping neighborhoods and cities together is upheld.

As a resident of Collington Station, which is located in the Incorporated City of Bowie, Maryland, I want to express my opposition to any plan for separating my neighborhood out of the Councilmanic District 4 that represents all of Bowie, Maryland to the Councilmanic District 6.

My family would like to remain in District 4 as it ensures our community of interest rests with our Bowie neighbors and follows the least change ideal and the desire to preserve residential community of interest.

While we recognize these are preliminary data, we are concerned that when population data do show a range within the lawful deviations, efforts will be made to change numbers without concern for the people. Please be mindful that splitting numbers, whether statistical or empirical, does involve real people. And giving consideration to the human factor does not pose a violation to the US Constitution.

We are a part of PG County District 4, which represents Bowie and would like to remain so.

I would also like to ask the Redistricting Commission board members when the initial notification was sent out to District 4 residents as well as any follow-up communication? I do not recall receiving any notifications from the Commission.

I look forward to hearing back from you.

Thank you in advance for your consideration of my concerns.

Sincerely,

Elise Enty Johnson

Date: August 2, 2021

To: 2021 Prince George's County Redistricting Commissioners  
Prince George's County

From: **Mr. and Mrs. Emmanuel Atoyebi**  
Prince George's County District 4  
**401 Jeanwood Court**  
Bowie, MD 20721

Re: Proposed Redistricting of Our Precinct from District 4 to District 6

I am a resident and concerned citizen of Prince George's County, MD. My interest in the Redistricting Commission's work is two-fold: (1) to ensure that our County is a model of political integrity in the redistricting process and (2) to ensure that the tenet of keeping neighborhoods and cities together is upheld.

As a resident of Collington Station, which is located in the Incorporated City of Bowie, Maryland, I want to express my opposition to any plan for separating my neighborhood out of the Councilmanic District 4 that represents all of Bowie, Maryland to the Councilmanic District 6.

My family would like to remain in District 4 as it ensures our community of interest rests with our Bowie neighbors and follows the least change ideal and the desire to preserve residential community of interest.

While we recognize these are preliminary data, we are concerned that when population data do show a range within the lawful deviations, efforts will be made to change numbers without concern for the people. Please be mindful that splitting numbers, whether statistical or empirical, does involve real people. And giving consideration to the human factor does not pose a violation to the US Constitution. We are a part of PG County District 4, which represents Bowie and would like to remain so.

Respectfully,

Vanessa and Emmanuel Atoyebi